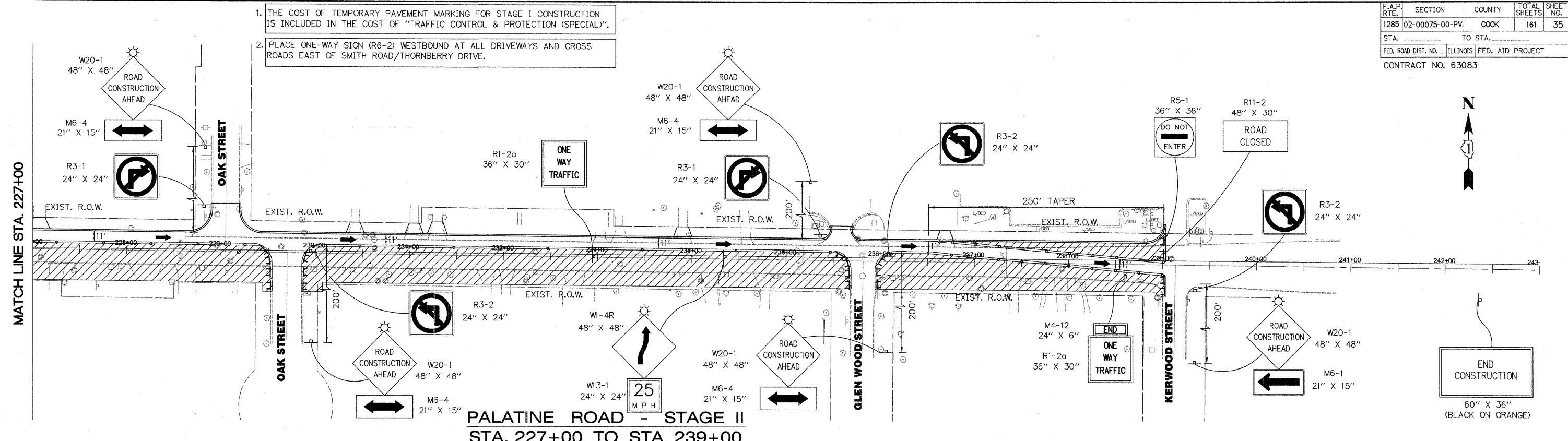
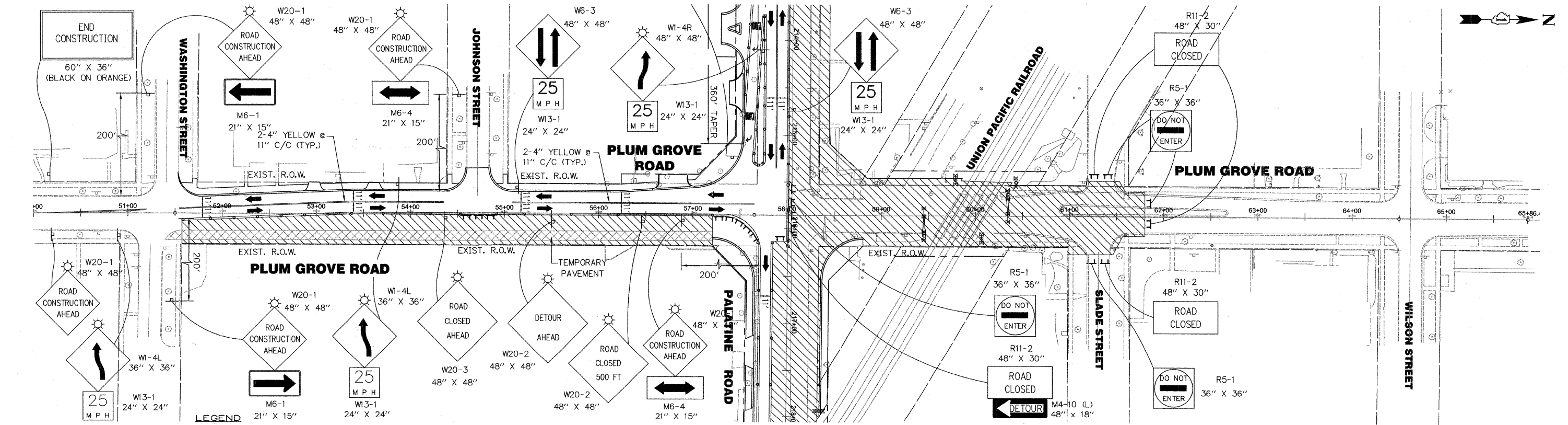


F.A.P. RTE.	SECTION	COUNTY	TOTAL SHEETS	SHEET NO.
1285	02-00075-00-PV	COOK	161	35
STA. _____		TO STA. _____		
FED. ROAD DIST. NO. _____		ILLINOIS FED. AID PROJECT		
CONTRACT NO. 63083				



PALATINE ROAD - STAGE II
STA. 227+00 TO STA. 239+00



PLUM GROVE ROAD - STAGE II
STA. 51+50 TO STA. 61+25

- LEGEND**
- TEMPORARY TRAFFIC ADVISORY SIGN
 - WORK AREA
 - TYPE II BARRICADE WITH MONO-DIRECTIONAL STEADY BURN LIGHTS AT 50' CENTERS, 25' IN TAPERS AND 10' IN RADII (TYP.) SEE NOTE 1.
 - TYPE III BARRICADE WITH LIGHT
 - TRAFFIC LANE
 - TEMPORARY PAVEMENT

REVISIONS	
NAME	DATE

ILLINOIS DEPARTMENT OF TRANSPORTATION
 VILLAGE OF PALATINE
 PALATINE ROAD & PLUM GROVE ROAD RECONSTRUCTION
 SMITH STREET TO US 14 (NORTHWEST HIGHWAY)
 PALATINE ROAD & PLUM GROVE ROAD
 MAINTENANCE OF TRAFFIC
 STAGE II
 SCALE: VERT. N.T.S.
 HORIZ. 1" = 50'
 DATE OCTOBER 19, 2009
 DRAWN BY ---
 CHECKED BY BA