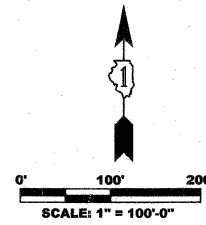


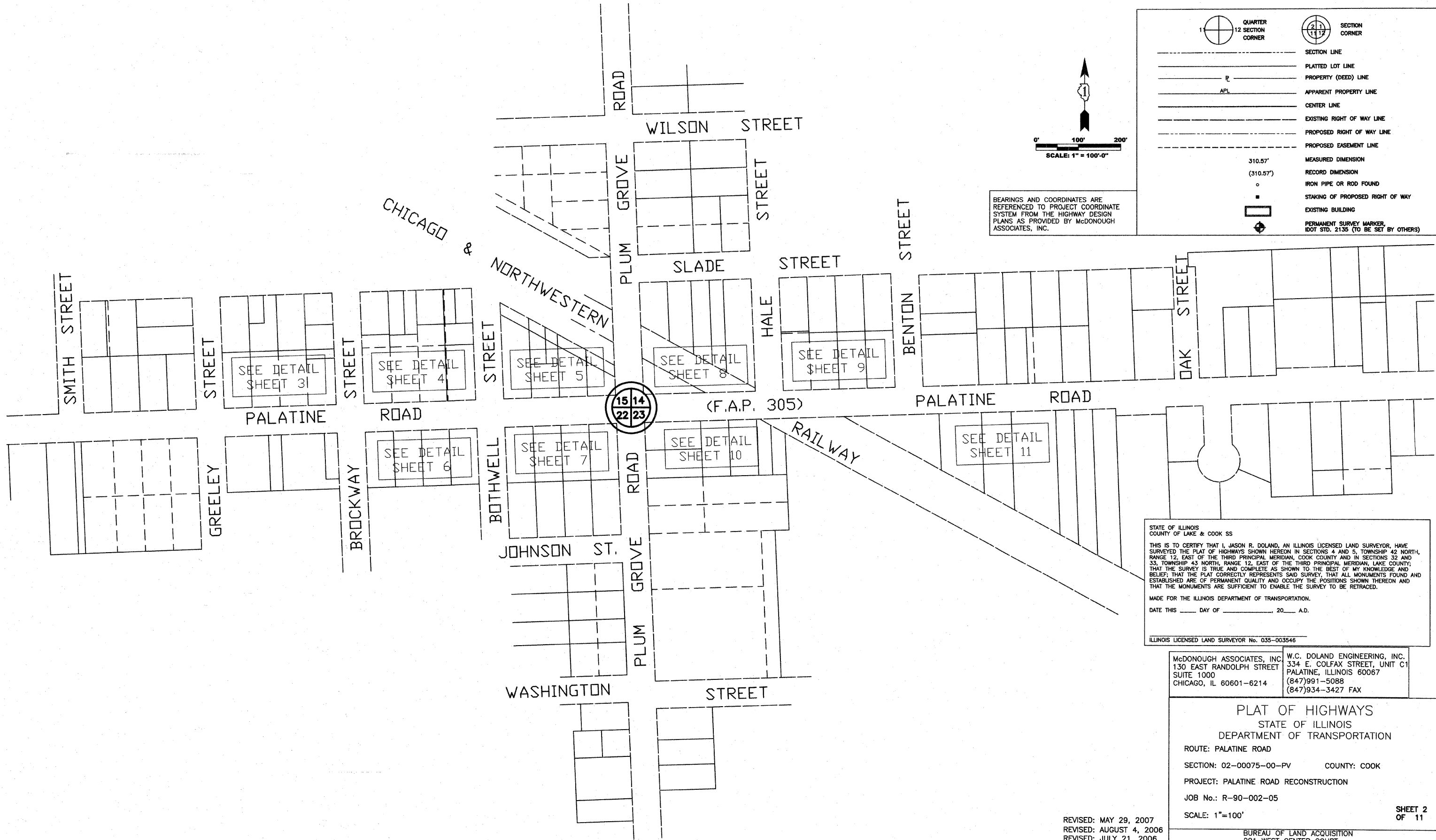
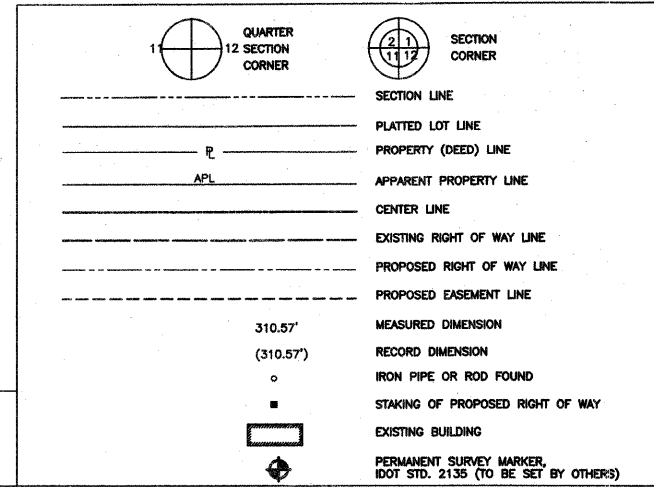
PART OF SEC. 14, 15, 22 & 23, T.42 N., R. 10 E. OF THE
THIRD PRINCIPAL MERIDIAN, IN COOK COUNTY, ILLINOIS

CONTRACT NO. 63083

F.A.P. RTE.	SECTION	COUNTY	TOTAL SHEETS	SHEET NO.
1285	02-00075-00-PV	COOK	161	62
STA. _____		TO STA. _____		
FED. ROAD DIST. NO. _____		ILLINOIS FED. AID PROJECT		



BEARINGS AND COORDINATES ARE REFERENCED TO PROJECT COORDINATE SYSTEM FROM THE HIGHWAY DESIGN PLANS AS PROVIDED BY McDONOUGH ASSOCIATES, INC.



STATE OF ILLINOIS
COUNTY OF LAKE & COOK SS

THIS IS TO CERTIFY THAT I, JASON R. DOLAND, AN ILLINOIS LICENSED LAND SURVEYOR, HAVE SURVEYED THE PLAT OF HIGHWAYS SHOWN HEREON IN SECTIONS 4 AND 5, TOWNSHIP 42 NORTH, RANGE 12, EAST OF THE THIRD PRINCIPAL MERIDIAN, COOK COUNTY AND IN SECTIONS 32 AND 33, TOWNSHIP 43 NORTH, RANGE 12, EAST OF THE THIRD PRINCIPAL MERIDIAN, LAKE COUNTY; THAT THE SURVEY IS TRUE AND COMPLETE AS SHOWN TO THE BEST OF MY KNOWLEDGE AND BELIEF; THAT THE PLAT CORRECTLY REPRESENTS SAID SURVEY, THAT ALL MONUMENTS FOUND AND ESTABLISHED ARE OF PERMANENT QUALITY AND OCCUPY THE POSITIONS SHOWN THEREON AND THAT THE MONUMENTS ARE SUFFICIENT TO ENABLE THE SURVEY TO BE RETRACED.

MADE FOR THE ILLINOIS DEPARTMENT OF TRANSPORTATION.
DATE THIS ____ DAY OF _____, 20__ A.D.

ILLINOIS LICENSED LAND SURVEYOR No. 035-003546

McDONOUGH ASSOCIATES, INC. 130 EAST RANDOLPH STREET SUITE 1000 CHICAGO, IL 60601-6214	W.C. DOLAND ENGINEERING, INC. 334 E. COLFAX STREET, UNIT C1 PALATINE, ILLINOIS 60067 (847)991-5088 (847)934-3427 FAX
--	--

PLAT OF HIGHWAYS
STATE OF ILLINOIS
DEPARTMENT OF TRANSPORTATION

ROUTE: PALATINE ROAD
SECTION: 02-00075-00-PV COUNTY: COOK
PROJECT: PALATINE ROAD RECONSTRUCTION
JOB No.: R-90-002-05
SCALE: 1"=100'

BUREAU OF LAND ACQUISITION
201 WEST CENTER COURT
SCHAUMBURG, IL 60196