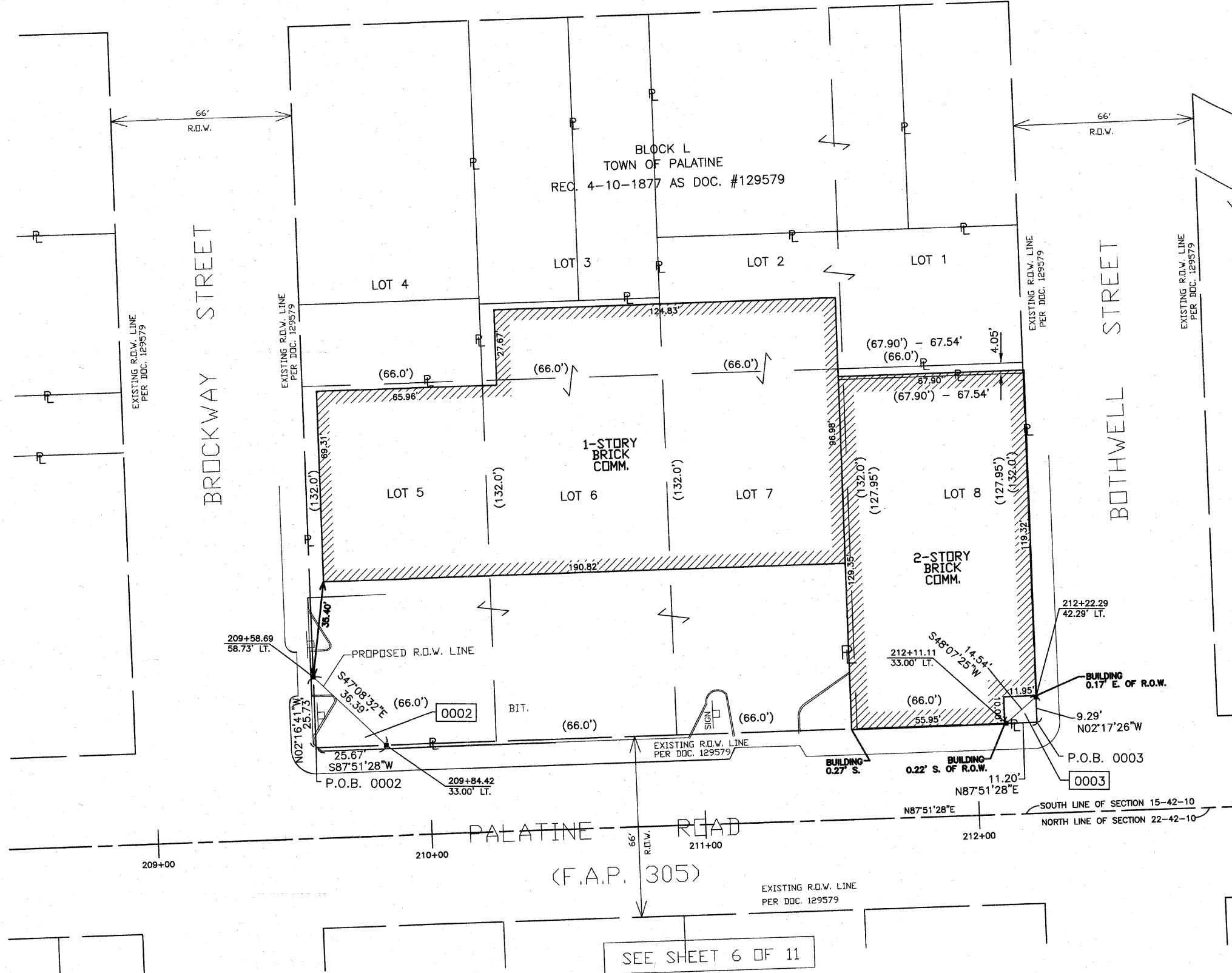


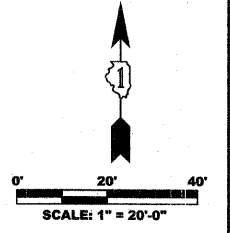
F.A.P. RTE.	SECTION	COUNTY	TOTAL SHEETS	SHEET NO.
1285	02-00075-00-PV	COOK	161	64
STA. _____ TO STA. _____				
FED. ROAD DIST. NO. _____		ILLINOIS FED. AID PROJECT		



**LEGEND**

- Quarter Section Corner (Symbol: 1/4 section corner)
- Section Corner (Symbol: 1/4 section corner)
- Section Line (Symbol: solid line)
- Platted Lot Line (Symbol: dashed line)
- Property (Deed) Line (Symbol: line with 'P' markers)
- Apparent Property Line (Symbol: line with 'APL' markers)
- Center Line (Symbol: line with 'C' markers)
- Existing Right of Way Line (Symbol: line with 'R.O.W.' markers)
- Proposed Right of Way Line (Symbol: line with 'P.R.O.W.' markers)
- Proposed Easement Line (Symbol: line with 'E' markers)
- Measured Dimension (Symbol: line with dimension)
- Record Dimension (Symbol: line with dimension)
- Iron Pipe or Rod Found (Symbol: circle with 'I.P.R.F.')
- Staking of Proposed Right of Way (Symbol: square)
- Existing Building (Symbol: rectangle)
- Permanent Survey Marker, DOT STD. 2135 (To be set by others) (Symbol: circle with 'P.S.M.'))

BEARINGS AND COORDINATES ARE REFERENCED TO PROJECT COORDINATE SYSTEM FROM THE HIGHWAY DESIGN PLANS AS PROVIDED BY McDONOUGH ASSOCIATES, INC.



SEE SHEET 5 OF 11

STATE OF ILLINOIS  
COUNTY OF LAKE & COOK SS

THIS IS TO CERTIFY THAT I, JASON R. DOLAND, AN ILLINOIS LICENSED LAND SURVEYOR, HAVE SURVEYED THE PLAT OF HIGHWAYS SHOWN HEREON IN SECTIONS 4 AND 5, TOWNSHIP 42 NORTH, RANGE 12, EAST OF THE THIRD PRINCIPAL MERIDIAN, COOK COUNTY AND IN SECTIONS 32 AND 33, TOWNSHIP 43 NORTH, RANGE 12, EAST OF THE THIRD PRINCIPAL MERIDIAN, LAKE COUNTY; THAT THE SURVEY IS TRUE AND COMPLETE AS SHOWN TO THE BEST OF MY KNOWLEDGE AND BELIEF; THAT THE PLAT CORRECTLY REPRESENTS SAID SURVEY, THAT ALL MONUMENTS FOUND AND ESTABLISHED ARE OF PERMANENT QUALITY AND OCCUPY THE POSITIONS SHOWN THEREON AND THAT THE MONUMENTS ARE SUFFICIENT TO ENABLE THE SURVEY TO BE RETRACED.

MADE FOR THE ILLINOIS DEPARTMENT OF TRANSPORTATION.  
DATE THIS \_\_\_\_\_ DAY OF \_\_\_\_\_, 20\_\_\_\_ A.D.  
ILLINOIS LICENSED LAND SURVEYOR No. 035-003546

McDONOUGH ASSOCIATES, INC. 130 EAST RANDOLPH STREET SUITE 1000 CHICAGO, IL 60601-6214  
W.C. DOLAND ENGINEERING, INC. 334 E. COLFAX STREET, UNIT C1 PALATINE, ILLINOIS 60067 (847)991-5088 (847)934-3427 FAX

**PLAT OF HIGHWAYS**  
STATE OF ILLINOIS  
DEPARTMENT OF TRANSPORTATION

ROUTE: PALATINE ROAD  
SECTION: 02-00075-00-PV COUNTY: COOK  
PROJECT: PALATINE ROAD RECONSTRUCTION  
JOB No.: R-90-002-05  
SCALE: 1"=20'

REVISED:  
JULY 21, 2006  
AUGUST 4, 2006  
MAY 29, 2007  
NOVEMBER 20, 2007

BUREAU OF LAND ACQUISITION  
201 WEST CENTER COURT  
SCHAUMBURG, IL 60196

SHEET 4 OF 11

PARCEL #	OWNER	P.I.N.	TOTAL HOLDING AREA	AREA TAKEN	PREVIOUSLY DEDICATED OR USED AREA	REMAINDER	PERMANENT EASEMENT	ACQUIRED BY
0002	LASALLE NATIONAL TRUST, NA AS TRUSTEE UNDER TRUST AGREEMENT DATED APRIL 26, 1996 KNOWN AS TRUST No. 120214	02-15-430-022	0.787 ACRE	0.008 ACRE (330 S.F.)	0 ACRE	0.779 ACRE	N/A	
0003	LASALLE NATIONAL BANK, NA AS TRUSTEE UNDER TRUST NUMBER 121423 DATED DECEMBER 9, 1997	02-15-430-013	0.199 ACRE	0.001 ACRE (52 S.F.)	0 ACRE	0.198 ACRE	N/A	

STATION	OFFSET	NORTHING	EASTING
209+58.69	58.73' LT.	11469.4049	9403.0186
209+84.42	33.00' LT.	11444.6517	9429.6956
212+11.11	33.00' LT.	11453.1257	9658.2291
212+22.29	42.29' LT.	11462.8293	9667.0530