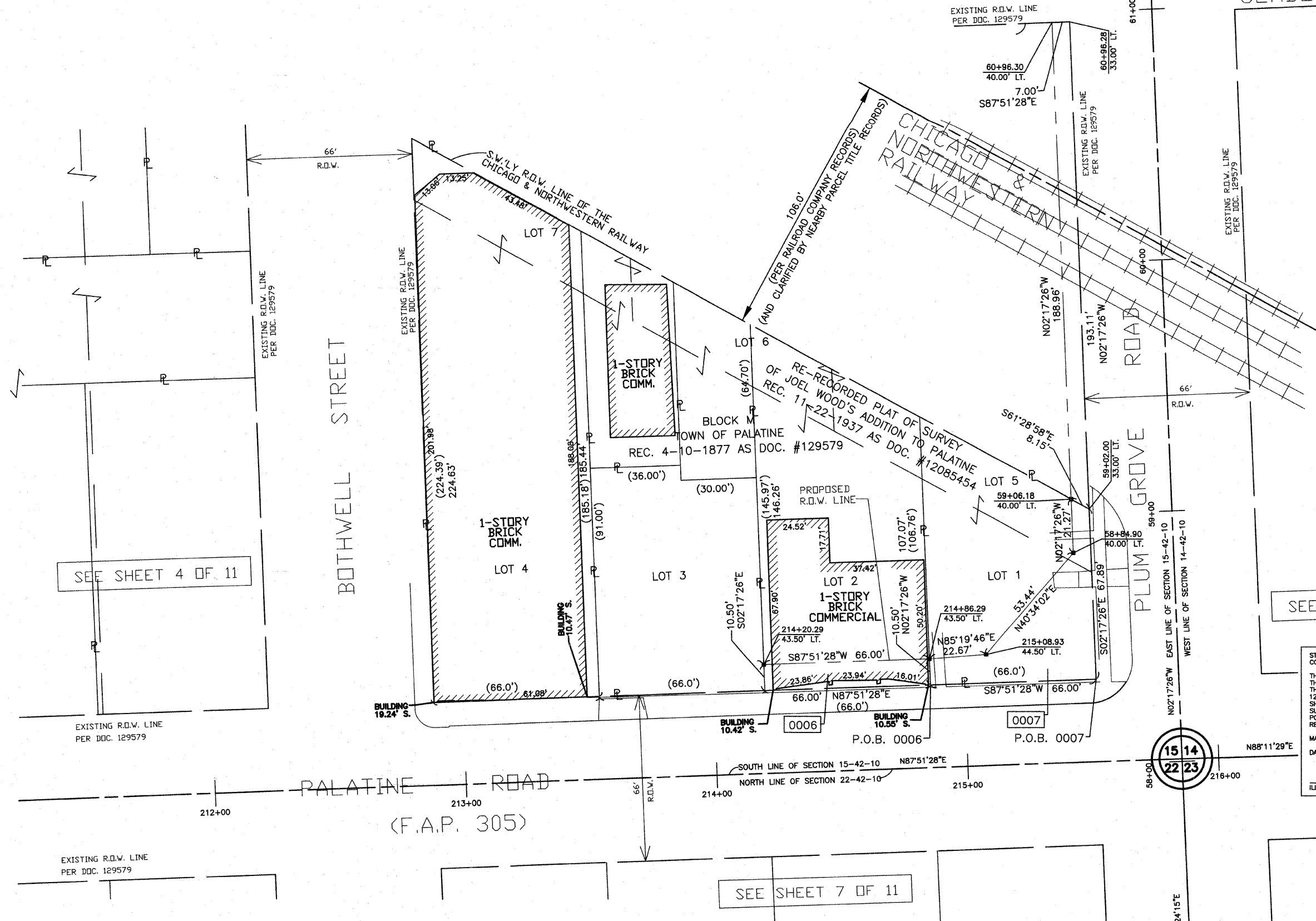
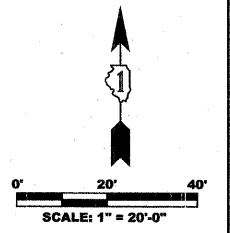


BEARINGS AND COORDINATES ARE REFERENCED TO PROJECT COORDINATE SYSTEM FROM THE HIGHWAY DESIGN PLANS AS PROVIDED BY McDONOUGH ASSOCIATES, INC.



SEE SHEET 8 OF 11

SEE SHEET 4 OF 11

SEE SHEET 7 OF 11

STATE OF ILLINOIS
COUNTY OF LAKE & COOK SS

THIS IS TO CERTIFY THAT I, JASON R. DOLAND, AN ILLINOIS LICENSED LAND SURVEYOR, HAVE SURVEYED THE PLAT OF HIGHWAYS SHOWN HEREON IN SECTIONS 4 AND 5, TOWNSHIP 42 NORTH, RANGE 12, EAST OF THE THIRD PRINCIPAL MERIDIAN, COOK COUNTY AND IN SECTIONS 32 AND 33, TOWNSHIP 43 NORTH, RANGE 12, EAST OF THE THIRD PRINCIPAL MERIDIAN, LAKE COUNTY; THAT THE SURVEY IS TRUE AND COMPLETE AS SHOWN TO THE BEST OF MY KNOWLEDGE AND BELIEF; THAT THE PLAT CORRECTLY REPRESENTS SAID SURVEY, THAT ALL MONUMENTS FOUND AND ESTABLISHED ARE OF PERMANENT QUALITY AND OCCUPY THE POSITIONS SHOWN THEREON AND THAT THE MONUMENTS ARE SUFFICIENT TO ENABLE THE SURVEY TO BE RETRACED.

MADE FOR THE ILLINOIS DEPARTMENT OF TRANSPORTATION.
DATE THIS ____ DAY OF _____, 20__ A.D.

ILLINOIS LICENSED LAND SURVEYOR No. 035-003546

McDONOUGH ASSOCIATES, INC.
130 EAST RANDOLPH STREET
SUITE 1000
CHICAGO, IL 60601-6214
(847)991-5088
(847)934-3427 FAX

W.C. DOLAND ENGINEERING, INC.
334 E. COLFAX STREET, UNIT C1
PALATINE, ILLINOIS 60067
(847)991-5088
(847)934-3427 FAX

PLAT OF HIGHWAYS
STATE OF ILLINOIS
DEPARTMENT OF TRANSPORTATION
ROUTE: PALATINE ROAD
SECTION: 02-00075-00-PV COUNTY: COOK
PROJECT: PALATINE ROAD RECONSTRUCTION
JOB No.: R-90-002-05
SCALE: 1"=20'

BUREAU OF LAND ACQUISITION
201 WEST CENTER COURT
SCHAUMBURG, IL 60196

PARCEL #	OWNER	P.I.N.	TOTAL HOLDING AREA	AREA TAKEN	PREVIOUSLY DEDICATED OR USED AREA	REMAINDER	PERMANENT EASEMENT	ACQUIRED BY
0006	JAMES LONGFIELD	02-15-431-006	0.192 ACRE	0.016 ACRE	0 ACRE	0.176 ACRE	N/A	
0007	VILLAGE OF PALATINE	02-15-431-007	0.133 ACRE	0.043 ACRE	0 ACRE	0.090 ACRE	N/A	

STATION	OFFSET	NORTHING	EASTING
214+20.29	43.50' LT.	11471.4375	9864.8666
214+86.29	43.50' LT.	11473.9047	9930.8204
215+08.93	44.50' LT.	11475.7505	9953.4137
58+84.90	40.00' LT.	11516.3481	9988.1697
59+07.34	40.00' LT.	11538.7691	9987.2728
59+03.17	33.00' LT.	11534.8780	9994.4340

REVISED:
JULY 21, 2006
AUGUST 4, 2006
MAY 29, 2007
NOVEMBER 20, 2007
MAY 27, 2008
SEPTEMBER 30, 2009