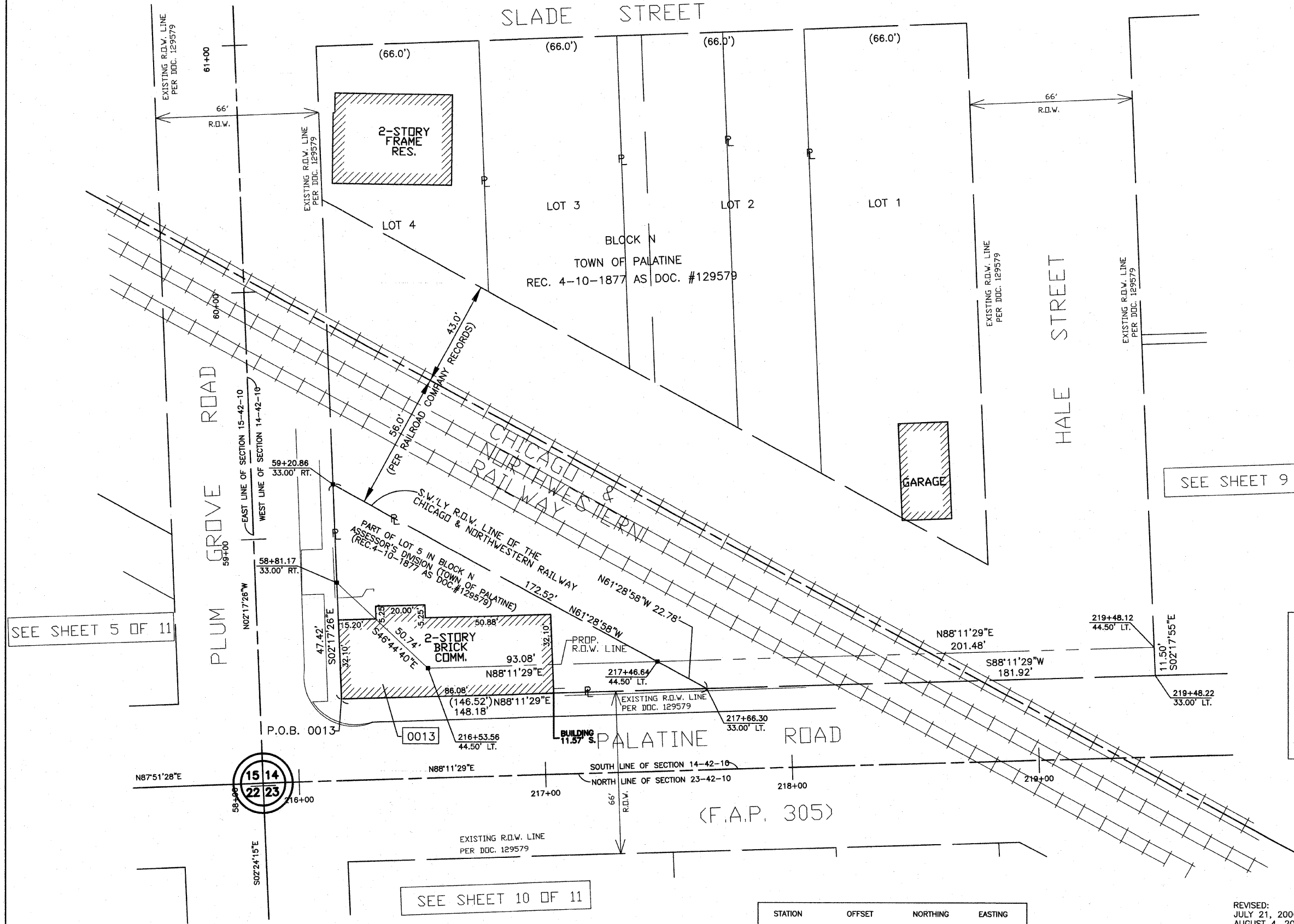
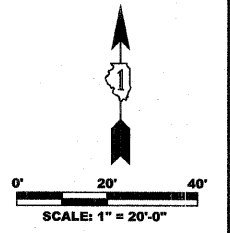


BEARINGS AND COORDINATES ARE REFERENCED TO PROJECT COORDINATE SYSTEM FROM THE HIGHWAY DESIGN PLANS AS PROVIDED BY McDONOUGH ASSOCIATES, INC.



SEE SHEET 5 OF 11

SEE SHEET 9 OF 11

SEE SHEET 10 OF 11

STATE OF ILLINOIS
 COUNTY OF LAKE & COOK SS
 THIS IS TO CERTIFY THAT I, JASON R. DOLAND, AN ILLINOIS LICENSED LAND SURVEYOR, HAVE SURVEYED THE PLAT OF HIGHWAYS SHOWN HEREON IN SECTIONS 4 AND 5, TOWNSHIP 42 NORTH, RANGE 12, EAST OF THE THIRD PRINCIPAL MERIDIAN, COOK COUNTY AND IN SECTIONS 32 AND 33, TOWNSHIP 43 NORTH, RANGE 12, EAST OF THE THIRD PRINCIPAL MERIDIAN, LAKE COUNTY; THAT THE SURVEY IS TRUE AND COMPLETE AS SHOWN TO THE BEST OF MY KNOWLEDGE AND BELIEF; THAT THE PLAT CORRECTLY REPRESENTS SAID SURVEY, THAT ALL MONUMENTS FOUND AND ESTABLISHED ARE OF PERMANENT QUALITY AND OCCUPY THE POSITIONS SHOWN THEREON AND THAT THE MONUMENTS ARE SUFFICIENT TO ENABLE THE SURVEY TO BE RETRACED.
 MADE FOR THE ILLINOIS DEPARTMENT OF TRANSPORTATION.
 DATE THIS ____ DAY OF _____, 20__ A.D.
 ILLINOIS LICENSED LAND SURVEYOR No. 035-003546

McDONOUGH ASSOCIATES, INC. 130 EAST RANDOLPH STREET SUITE 1000 CHICAGO, IL 60601-6214
 W.C. DOLAND ENGINEERING, INC. 334 E. COLFAX STREET, UNIT C1 PALATINE, ILLINOIS 60067 (847)991-5088 (847)934-3427 FAX

PLAT OF HIGHWAYS
 STATE OF ILLINOIS
 DEPARTMENT OF TRANSPORTATION
 ROUTE: PALATINE ROAD
 SECTION: 02-00075-00-PV COUNTY: COOK
 PROJECT: PALATINE ROAD RECONSTRUCTION
 JOB No.: R-90-002-05
 SCALE: 1"=20'
 BUREAU OF LAND ACQUISITION
 201 WEST CENTER COURT
 SCHAUMBURG, IL 60196

PARCEL #	OWNER	P.I.N.	TOTAL HOLDING AREA	AREA TAKEN	PREVIOUSLY DEDICATED OR USED AREA	REMAINDER	PERMANENT EASEMENT	ACQUIRED BY
0013	PALATINE LODGE No. 314, ANCIENT FREE AND ACCEPTED MASONS	02-14-326-005	0.148 ACRE	0.051 ACRE	0 ACRE	0.097 ACRE	N/A	

STATION	OFFSET	NORTHING	EASTING
58+81.17	33.00' RT.	11515.5359	10061.2605
59+20.86	33.00' RT.	11555.1960	10059.6741
216+53.56	44.50' LT.	11480.7691	10098.2116
217+46.64	44.50' LT.	11483.7070	10191.2460
217+66.30	33.00' LT.	11472.8332	10211.2587

REVISED:
 JULY 21, 2006
 AUGUST 4, 2006
 MAY 29, 2007
 NOVEMBER 20, 2007
 DECEMBER 20, 2007
 APRIL 28, 2008
 MAY 27, 2008
 SEPTEMBER 22, 2009