

GENERAL NOTES

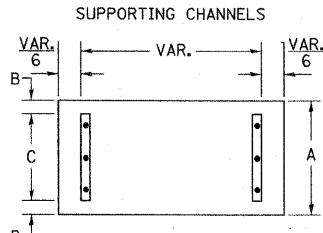
- WHERE MAST ARM MOUNTED STREET NAME SIGNS ARE SPECIFIED, THE ARM ASSEMBLY AND POLES SHALL BE DESIGNED TO SUPPORT THE LOADINGS CALLED FOR ON STANDARDS 834001, 834006 AND 834011, AS APPLICABLE, PLUS TWO (2) SIGN PANELS 2'-6" X 6'-0" MOUNTED AS SHOWN. THE DESIGN SHALL BE IN ACCORDANCE WITH THE REQUIREMENTS OF THE CURRENT "STANDARD SPECIFICATIONS FOR STRUCTURAL SUPPORTS FOR HIGHWAY SIGNS, LUMINAIRES, AND TRAFFIC SIGNALS" AS PUBLISHED BY THE AMERICAN ASSOCIATION OF STATE HIGHWAY AND TRANSPORTATION OFFICIALS FOR 80 M.P.H. WIND VELOCITY.
- ALL SIGNS SHALL HAVE A WHITE REFLECTORIZED LEGEND AND BORDER ON A GREEN REFLECTORIZED BACKGROUND. TYPE A SHEETING.
- THE SIGN LENGTH SHOULD BE INCREASED IN 6-INCH INCREMENTS, BUT THE OVERALL LENGTH SHOULD NOT EXCEED 6'-0".
- ALL BORDERS SHALL BE 3/4" WIDE AND CORNER RADIUS SHALL BE 2-1/4".
- SIGNFIX ALUMINUM CHANNEL FRAMING SYSTEM SHALL BE USED FOR ALL SIGNS ATTACHED TO SIGNAL POLES AND POSTS. LOCAL SUPPLIERS OF THE SIGNFIX ALUMINUM CHANNEL FRAMING SYSTEM ARE:

- A.K.T. CORPORATION
- SCHAUMBURG, IL
- TUCKER COMPANY, INC.
- WAUWATOSA, WI
- AMERICAN FABRICATION CO.
- CHICAGO HEIGHTS, IL
- WESTERN TRAFFIC CONTROL INC.
- CICERO, IL

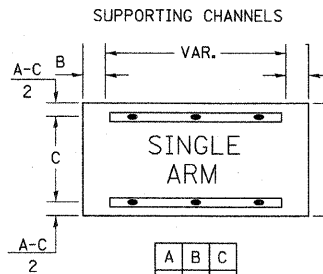
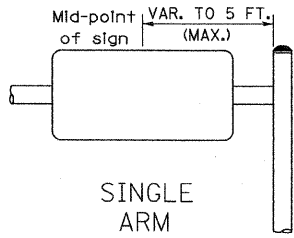
PARTS LISTING:

- SIGN CHANNEL PART #HPN053 (MED. CHANNEL)
- SIGN SCREWS 1/4" X 14 X 1" H.W.H. #3
- BRACKETS PART #HPN034 (UNIVERSAL)
- CHANNEL CLAMPS WITH STAINLESS STEEL STRAPPING

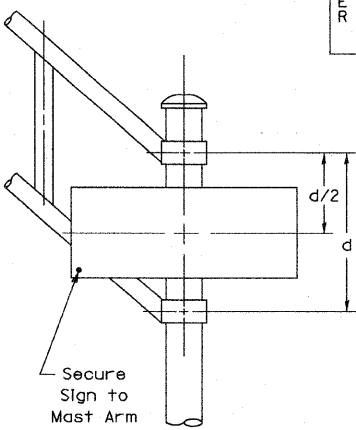
OTHER BRANDS OF MOUNTING HARDWARE ARE ACCEPTABLE. BASED UPON THE DEPARTMENT'S APPROVAL AND COMPATIBILITY WITH THE CHANNEL/BACKET OF THE PRODUCT.



A	B	C
18"	2"	14"



A	B	C
18"	2"	12"
30"	2"	22"



DUAL ARM

SIGNFIX ALUMINUM CHANNEL FRAMING SYSTEM shall be used. See Note #5

Upper Case To Lower Case Spacing Chart 8-6 Inch Series "C & D"

EXAMPLE, 2(3) DENOTES 3/8"

		SECOND LETTER																			
		a c d e				b h k l				f w		j		s t		v y		x		z	
		C	D	C	D	C	D	C	D	C	D	C	D	C	D	C	D	C	D		
FIRST LETTER	A W X	1 2	1 4	1 4	1 5	1 2	1 4	0 6	1 0	1 1	1 4	0 6	1 0	1 1	1 2	1 2	1 4	1 2	1 4		
	B	1 4	1 5	2 0	2 1	1 4	1 5	1 1	1 2	1 4	1 5	1 2	1 4	1 2	1 4	1 6	1 7				
	C E G	1 4	1 5	2 0	2 1	1 2	1 4	0 6	1 0	1 2	1 4	1 2	1 4	1 4	1 5	1 4	1 5				
	DOQR	1 4	1 5	2 0	2 1	1 4	1 5	0 6	1 0	1 2	1 4	1 2	1 4	1 4	1 5	1 4	1 5				
	F	0 5	0 6	1 4	1 5	0 6	1 0	0 5	0 6	0 6	1 0	0 6	1 0	0 6	1 0	1 1	1 2				
	HIMN	2 0	2 1	2 2	2 4	2 0	2 1	1 4	1 5	1 6	1 7	1 6	1 7	2 0	2 1	2 0	2 1				
	J U	2 0	2 1	2 0	2 1	1 6	1 7	1 4	1 5	1 6	1 7	1 6	1 7	1 6	1 7	2 0	2 1				
	K L	1 1	1 2	1 6	1 7	1 1	1 2	0 5	0 6	1 1	1 2	1 1	1 2	1 1	1 2	1 2	1 4				
	P	1 2	1 4	1 4	1 5	1 2	1 4	0 5	0 6	1 1	1 2	1 1	1 2	1 1	1 2	1 4	1 2	1 4			
	S	1 2	1 4	1 6	1 7	1 2	1 4	0 6	1 0	1 2	1 4	1 2	1 4	1 2	1 4	1 2	1 4				
T	1 1	1 2	1 6	1 7	0 6	1 0	0 6	1 0	1 1	1 2	1 1	1 2	1 1	1 2	1 2	1 4					
V	0 6	1 0	1 4	1 5	1 1	1 2	0 6	1 0	1 2	1 4	1 2	1 4	1 2	1 4	1 2	1 4					
Y	0 5	0 6	1 4	1 5	0 6	1 0	0 5	0 6	0 5	0 7	0 5	0 6	0 6	1 0	1 1	1 2					
Z	1 6	1 7	2 2	2 4	1 6	1 7	1 2	1 4	1 6	1 7	1 6	1 7	1 6	1 7	2 0	2 1					

Lower Case To Lower Case Spacing Chart 6 Inch Series "C & D"

		SECOND LETTER																			
		a c d e				b h k l				f w		j		s t		v y		x		z	
		C	D	C	D	C	D	C	D	C	D	C	D	C	D	C	D	C	D		
FIRST LETTER	adngj	1 6	1 7	2 2	2 4	1 6	1 7	1 2	1 4	1 4	1 5	1 4	1 5	1 6	1 7	1 6	1 7				
	imngu	1 2	1 4	1 6	1 7	1 1	1 2	0 5	0 6	1 1	1 2	1 1	1 2	1 2	1 4	1 2	1 4				
	bfcops	1 2	1 4	1 6	1 7	1 2	1 4	0 6	1 0	1 2	1 4	1 2	1 4	1 2	1 4	1 2	1 4				
	ce	1 2	1 4	1 6	1 7	1 2	1 4	0 6	1 0	1 2	1 4	1 2	1 4	1 2	1 4	1 2	1 4				
	r	0 6	1 0	1 2	1 4	0 6	1 0	0 3	0 3	0 5	0 6	0 5	0 6	0 6	1 0	0 6	1 0				
	tz	1 2	1 4	1 6	1 7	1 2	1 4	0 6	1 0	1 1	1 2	1 1	1 2	1 2	1 4	1 2	1 4				
	vy	1 1	1 2	1 4	1 5	1 1	1 2	0 5	0 6	0 6	1 0	0 6	1 0	1 1	1 2	1 1	1 2				
	w	1 1	1 2	1 4	1 5	1 1	1 2	0 5	0 6	1 1	1 2	1 1	1 2	1 1	1 2	1 2	1 4				
	x	1 2	1 4	1 6	1 7	1 1	1 2	0 5	0 6	1 1	1 2	1 1	1 2	1 1	1 2	1 2	1 4				

Number To Number Spacing Chart 8 Inch Series "C & D"

		SECOND NUMBER																			
		0		1		2		3		4		5		6		7		8		9	
		C	D	C	D	C	D	C	D	C	D	C	D	C	D	C	D	C	D	C	D
FIRST LETTER	0 9	1 6	1 7	1 6	1 7	1 4	1 5	1 2	1 4	1 4	1 5	1 4	1 5	1 6	1 7	1 2	1 4	1 6	1 7	1 6	1 7
	1	2 0	2 1	2 0	2 1	2 0	2 1	1 6	1 7	1 4	1 5	2 0	2 1	2 0	2 1	1 4	1 5	2 0	2 1	2 0	2 1
	2 3 4	1 4	1 5	1 4	1 5	1 4	1 5	1 2	1 4	1 2	1 4	1 4	1 5	1 4	1 5	1 1	1 2	1 6	1 7	1 4	1 5
	5	1 4	1 5	1 4	1 5	1 4	1 5	1 1	1 2	1 1	1 2	1 4	1 5	1 4	1 5	1 1	1 2	1 4	1 5	1 4	1 5
	6	1 6	1 7	1 4	1 5	1 4	1 5	1 2	1 5	1 2	1 4	1 4	1 5	1 4	1 5	1 1	1 2	1 4	1 5	1 4	1 5
	7	1 2	1 4	1 2	1 4	1 4	1 5	1 2	1 5	1 5	0 6	1 2	1 4	1 4	1 5	1 1	1 2	1 4	1 5	1 2	1 4
	8	1 6	1 7	1 6	1 7	1 4	1 5	1 2	1 5	1 2	1 4	1 4	1 5	1 6	1 7	1 2	1 4	1 6	1 7	1 4	1 5

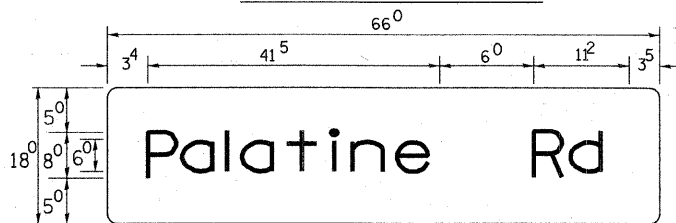
UPPER AND LOWER CASE

LETTER WIDTHS

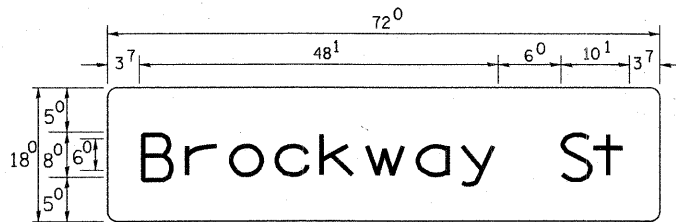
LETTERS	6 INCH UPPER CASE LETTERS				8 INCH UPPER CASE LETTERS				LETTERS	6 INCH LOWER CASE LETTERS			
	SERIES		SERIES		SERIES		SERIES			SERIES		SERIES	
	C	D	C	D	C	D	C	D		C	D	C	D
A	3 6	5 0	5 0	6 5	a	3 5	4 2						
B	3 2	4 0	4 3	5 3	b	3 5	4 2						
C	3 2	4 0	4 3	5 3	c	3 5	4 1						
D	3 2	4 0	4 3	5 3	d	3 5	4 2						
E	3 0	3 5	4 0	4 7	e	3 5	4 2						
F	3 0	3 5	4 0	4 7	f	2 3	2 6						
G	3 2	4 0	4 3	5 3	g	3 5	4 2						
H	3 2	4 0	4 3	5 3	h	3 5	4 2						
I	0 7	0 7	1 1	1 2	i	1 1	1 1						
J	3 0	3 6	4 0	5 0	j	2 0	2 2						
K	3 2	4 1	4 3	5 4	k	3 5	4 2						
L	3 0	3 5	4 0	4 7	l	1 1	1 1						
M	3 7	4 5	5 1	6 1	m	6 0	7 0						
N	3 2	4 0	4 3	5 3	n	3 5	4 2						
O	3 4	4 2	4 5	5 5	o	3 6	4 3						
P	3 2	4 0	4 3	5 3	p	3 5	4 2						
Q	3 4	4 2	4 5	5 5	q	3 5	4 2						
R	3 2	4 0	4 3	5 3	r	2 6	3 2						
S	3 2	4 0	4 3	5 3	s	3 6	4 2						
T	3 0	3 5	4 0	4 7	t	2 7	3 2						
U	3 2	4 0	4 3	5 3	u	3 5	4 2						
V	3 5	4 4	4 7	6 0	v	4 2	4 7						
W	4 4	5 2	6 0	7 0	w	5 5	6 4						
X	3 4	4 0	4 5	5 3	x	4 4	5 1						
Y	3 6	5 0	5 0	6 6	y	4 6	5 3						
Z	3 2	4 0	4 3	5 3	z	3 6	4 3						

NUMBER	6 INCH SERIES		8 INCH SERIES	
	C	D	C	D
1	1 2	1 4	1 5	2 0
2	3 2	4 0	4 3	5 3
3	3 2	4 0	4 3	5 3
4	3 5	4 3	4 7	5 7
5	3 2	4 0	4 3	5 3
6	3 2	4 0	4 3	5 3
7	3 2	4 0	4 3	5 3
8	3 2	4 0	4 3	5 3
9	3 2	4 0	4 3	5 3
0	3 4	4 2	4 5	5 5

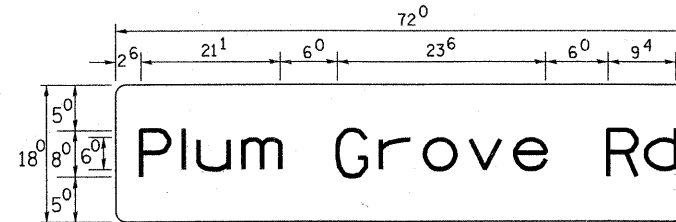
PANEL SIGN DESIGN TYPE 1



8.25 Sq. Ft. each
 4 Required
 Design Series D



9.0 Sq. Ft. each
 2 Required
 Design Series D



9.0 Sq. Ft. each
 2 Required
 Design Series C

DATE = #DATE#
 FILE NAME = #FILENAME#
 USER NAME = #USER#

REVISIONS	
NAME	DATE

ILLINOIS DEPARTMENT OF TRANSPORTATION
 VILLAGE OF PALATINE
 PALATINE ROAD & PLUM GROVE ROAD RECONSTRUCTION
 SMITH STREET TO US 14 (NORTHWEST HIGHWAY)
 MAST ARM MOUNTED STREET NAME SIGNS

SCALE: NONE
 DATE: OCTOBER 19, 2009
 DRAWN BY: JMK
 CHECKED BY: DMB