

F.A.P. RTE.	SECTION	COUNTY	TOTAL SHEETS	SHEET NO.
1285	02-0075-00-PV	COOK	161	124
STA. _____ TO STA. _____		FED. ROAD DIST. NO. 1 ILLINOIS FED. AID PROJECT		

ROUTE MARKERS

FOR U.S. ROUTES MI-40-2424

FOR ILLINOIS ROUTES MI-50-2424

R.R. UNMARKED ROUTES SPECIAL 24" x 18" VARIABLE 4" BLACK LETTERS ON WHITE REFLECTIVE BACKGROUND

ARROWS SIGNS

M5-1L-2115

M5-1R-2115

M6-1-2115

M6-3-2115

CARDINAL DIRECTION & DETOUR SIGNS

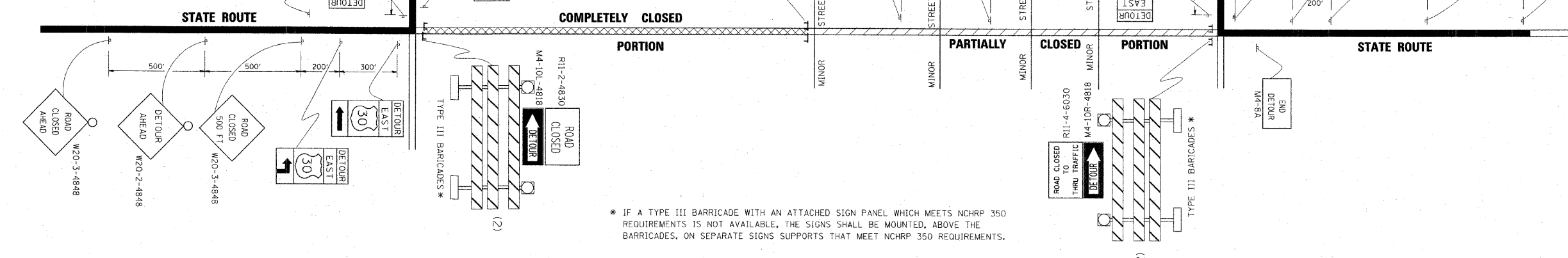
NORTH M3-1-2412

EAST M3-2-2412

SOUTH M3-3-2412

WEST M3-4-2412

DETOUR M4-8-2412



* IF A TYPE III BARRICADE WITH AN ATTACHED SIGN PANEL WHICH MEETS NCHRP 350 REQUIREMENTS IS NOT AVAILABLE, THE SIGNS SHALL BE MOUNTED, ABOVE THE BARRICADES, ON SEPARATE SIGNS SUPPORTS THAT MEET NCHRP 350 REQUIREMENTS.

FILE NAME =	USER NAME = drsvakosgn	DESIGNED -	REVISED - 10-18-02
ca:\pwwork\pwwork\DRIVAKOSGN\01083151\21.dgn		DRAWN -	REVISED - R. BORO 09-14-09
		CHECKED -	REVISED -
		DATE -	REVISED -

**STATE OF ILLINOIS
DEPARTMENT OF TRANSPORTATION**

**DETOUR SIGNING
FOR CLOSING STATE HIGHWAYS**

SCALE: NONE SHEET NO. 1 OF 1 SHEETS STA. TO STA.

F.A. RTE.	SECTION	COUNTY	TOTAL SHEETS	SHEET NO.
	TC-21			
CONTRACT NO.				
FED. ROAD DIST. NO. 1 ILLINOIS FED. AID PROJECT				

REVISIONS	
NAME	DATE

ILLINOIS DEPARTMENT OF TRANSPORTATION
VILLAGE OF PALATINE
PALATINE ROAD & PLUM GROVE ROAD RECONSTRUCTION
SMITH STREET TO US 14 (NORTHWEST HIGHWAY)

**TYPICAL MARKING
FOR CLOSING STATE HIGHWAYS**

SCALE: VERT. _____
HORIZ. _____
DATE: OCTOBER 19, 2009

DRAWN BY _____
CHECKED BY _____

PLOT DATE = \$DATE\$
FILE NAME = \$FILENAME\$
PLOT SCALE = \$SCALE\$
USER NAME = \$USER\$