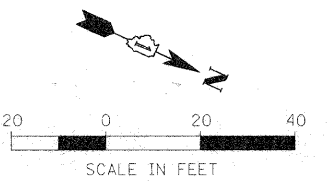
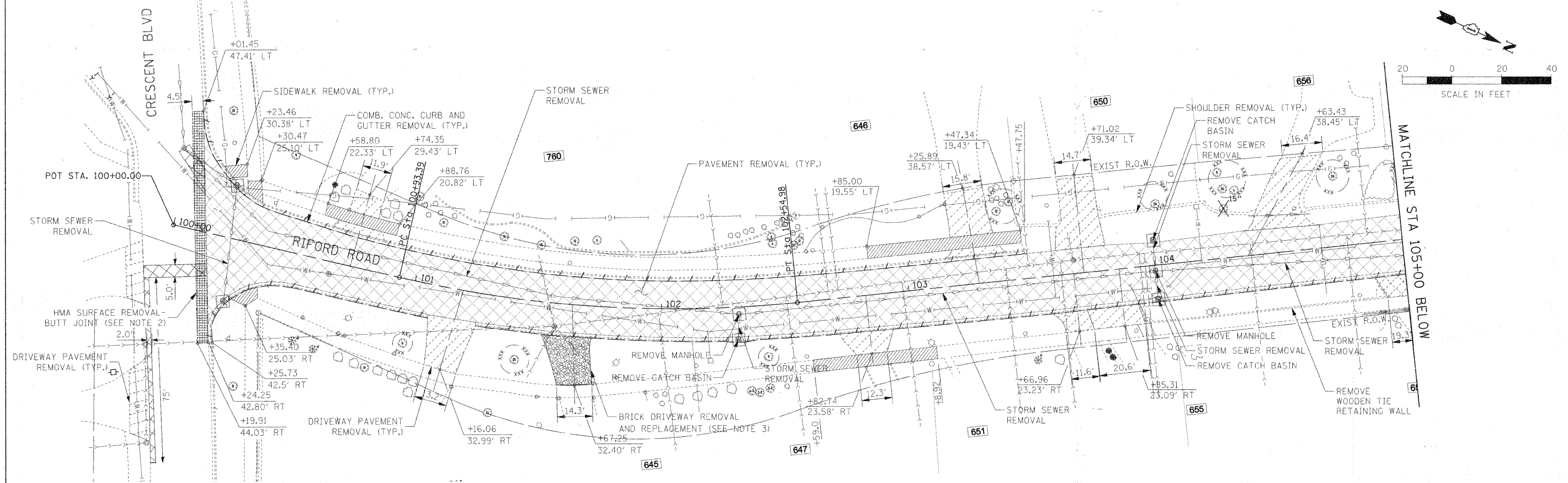
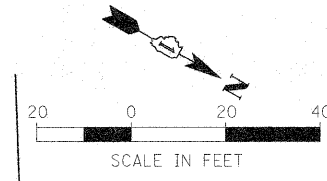
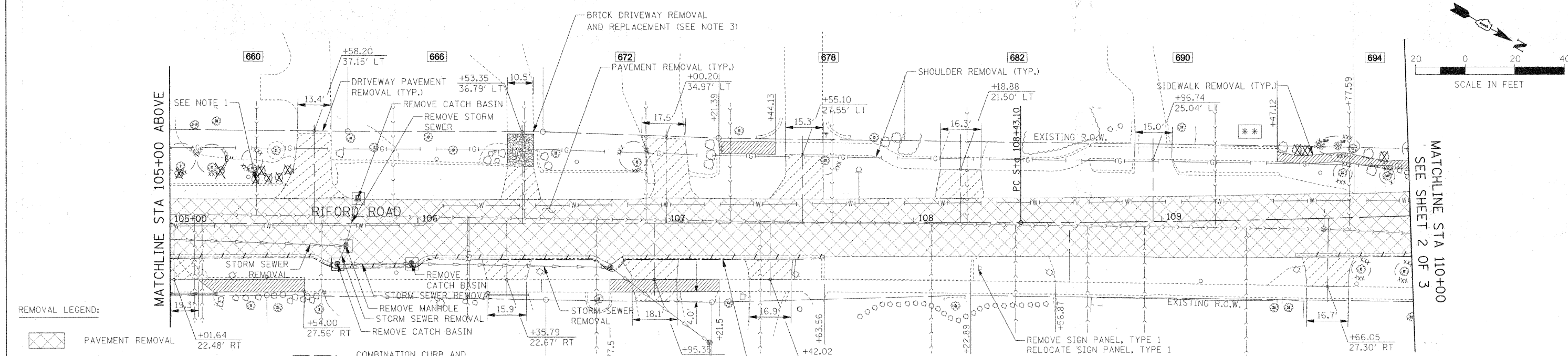


BY	DATE
SURVEYED	
ALIGNED	
CHECKED	
PLANNED	
NO. OF WAY CHECKED	
CADD FILE NAME	
PLAN	
NO.	



BY	DATE
SURVEYED	
PLANNED	
CHECKED	
STRUCTURE	
NOTATIONS	
CHKD	
PROFILE	
NO.	



**REMOVAL LEGEND:**

- PAVEMENT REMOVAL
- PAVEMENT PATCHING (REMOVAL INCIDENTAL TO PAY ITEM)
- HOT-MIX ASPHALT SURFACE REMOVAL, 1 1/2"
- SIDEWALK REMOVAL
- DRIVEWAY PAVEMENT REMOVAL
- HMA SURFACE REMOVAL - BUTT JOINT
- COMBINATION CURB AND GUTTER REMOVAL
- DRAINAGE STRUCTURE REMOVAL
- TREE REMOVAL
- TEMPORARY FENCE (FOR TREE PROTECTION)
- CLEARING ITEMS: SAPLINGS (LESS THAN 6" DIA.), SHRUBS, AND BUSHES TO BE REMOVED

- NOTES:**
- SHRUB REMOVAL AND TREE REMOVAL (LESS THAN 6" DIAMETER) SHALL BE CLEARED IN ACCORDANCE WITH SECTION 201 OF THE STANDARD SPECIFICATIONS. THE CONTRACTOR IS RESPONSIBLE FOR ANY DAMAGE TO LANDSCAPING THAT SHOULD REMAIN.
  - REFER TO ROADWAY DETAILS FOR HMA SURFACE REMOVAL - BUTT JOINT DETAILS.
  - BRICKS SHALL BE SALVAGED AND USED AGAIN AT THE SAME DRIVEWAY. PAID FOR AS BRICK DRIVEWAY REMOVAL AND REPLACEMENT.
  - REFER TO PAVEMENT MARKING AND SIGNAGE PLANS FOR LOCATIONS OF SIGN PANEL REMOVAL AND RELOCATION AND OBELISK STREET SIGN RELOCATION.

FILE NAME =	USER NAME = #USER#	DESIGNED - JAB	REVISED -	<b>STATE OF ILLINOIS DEPARTMENT OF TRANSPORTATION</b>	<b>RIFORD ROAD REMOVAL PLAN</b>	F.A.U. RTE. 2115	SECTION 05-00068-00-FP	COUNTY DUPAGE	TOTAL SHEETS 141	SHEET NO. 28	
#FILE#		DRAWN - JAB	REVISED -			SCALE: 1"=20'	SHEET NO. 1 OF 3 SHEETS	STA. 100+00.00 TO STA. 110+00.00	CONTRACT NO. 63092	FED. ROAD DIST. NO. 1 ILLINOIS FED. AID PROJECT	
		CHECKED -	REVISED -								
		DATE - 12/01/2009	REVISED -								