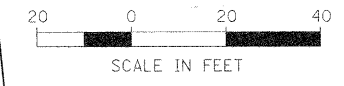


NOTES:

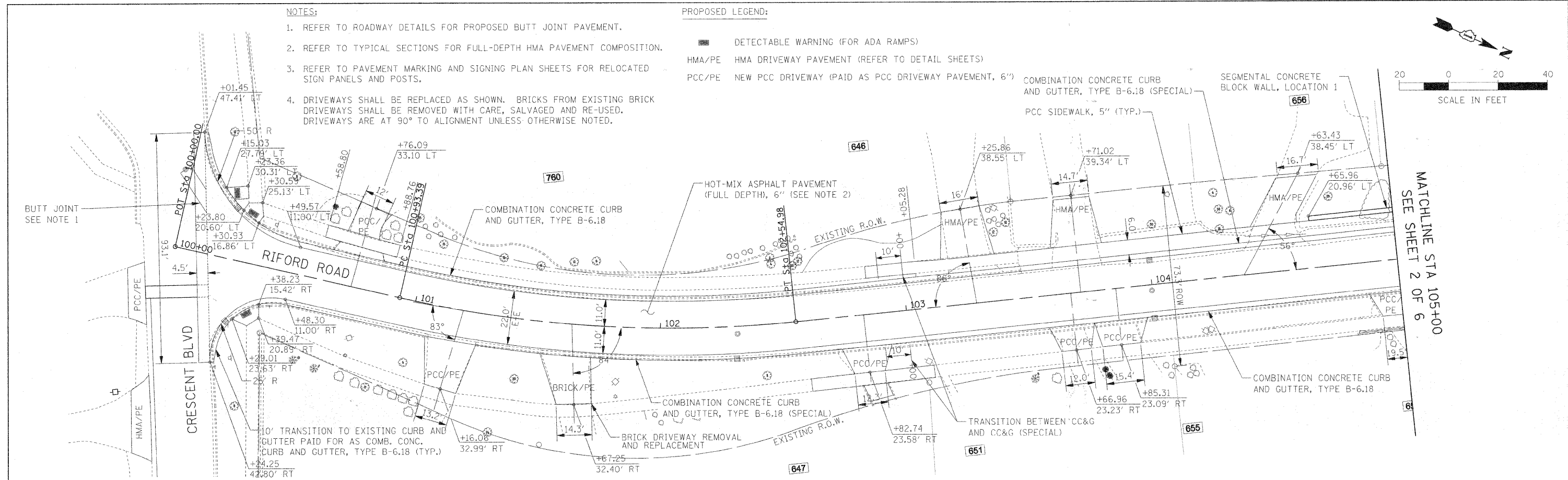
1. REFER TO ROADWAY DETAILS FOR PROPOSED BUTT JOINT PAVEMENT.
2. REFER TO TYPICAL SECTIONS FOR FULL-DEPTH HMA PAVEMENT COMPOSITION.
3. REFER TO PAVEMENT MARKING AND SIGNING PLAN SHEETS FOR RELOCATED SIGN PANELS AND POSTS.
4. DRIVEWAYS SHALL BE REPLACED AS SHOWN. BRICKS FROM EXISTING BRICK DRIVEWAYS SHALL BE REMOVED WITH CARE, SALVAGED AND RE-USED. DRIVEWAYS ARE AT 90° TO ALIGNMENT UNLESS OTHERWISE NOTED.

PROPOSED LEGEND:

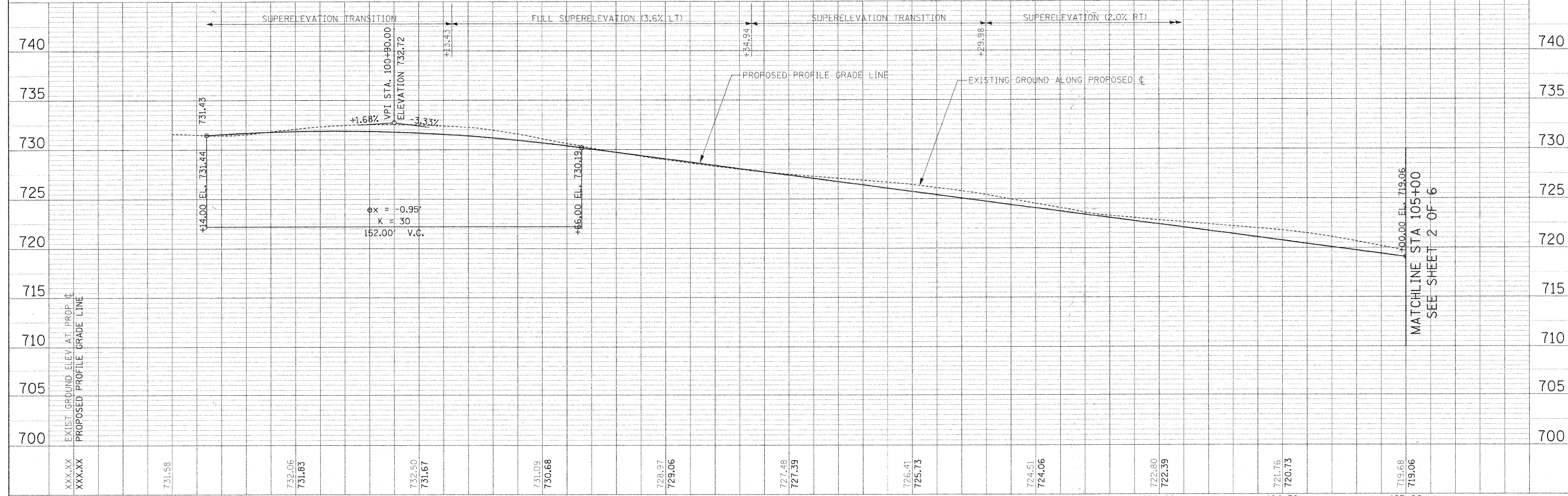
- DETECTABLE WARNING (FOR ADA RAMPS)
- HMA/PE HMA DRIVEWAY PAVEMENT (REFER TO DETAIL SHEETS)
- PCC/PE NEW PCC DRIVEWAY (PAID AS PCC DRIVEWAY PAVEMENT, 6")
- COMBINATION CONCRETE CURB AND GUTTER, TYPE B-6.18 (SPECIAL)
- SEGMENTAL CONCRETE BLOCK WALL, LOCATION 1
- PCC SIDEWALK, 5" (TYP.)



DATE	
BY	
PLAN	
NO.	
DATE	
BY	
NOTE BOOK	
NO.	
DATE	
BY	
NOTE BOOK	
NO.	
DATE	
BY	
NOTE BOOK	
NO.	



DATE	
BY	
PROFILE	
NO.	
DATE	
BY	
NOTE BOOK	
NO.	
DATE	
BY	
NOTE BOOK	
NO.	



FILE NAME =	USER NAME = #USER#	DESIGNED - JMT	REVISED -	STATE OF ILLINOIS DEPARTMENT OF TRANSPORTATION	RIFORD ROAD PLAN AND PROFILE	F.A.U. RTE. 4335	SECTION 05-00068-00-FP	COUNTY DUPAGE	TOTAL SHEETS 141	SHEET NO. 33	
FILEL	PLLOT SCALE = #SCALE#	DRAWN - JAB	REVISED -			SCALE: 1"=20'	SHEET NO. 1 OF 6 SHEETS	STA. 100+00.00 TO STA. 105+00.00	RIFORD ROAD RECONSTRUCTION	CONTRACT NO. 63092	FED. ROAD DIST. NO. 1 ILLINOIS FED. AID PROJECT
	PLLOT DATE = #DATE#	CHECKED -	REVISED -								
		DATE - 12/01/2009	REVISED -								