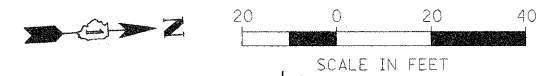


REFER TO "INTERSECTION AND ELEVATION DETAIL SHEET" FOR OAK STREET INFORMATION

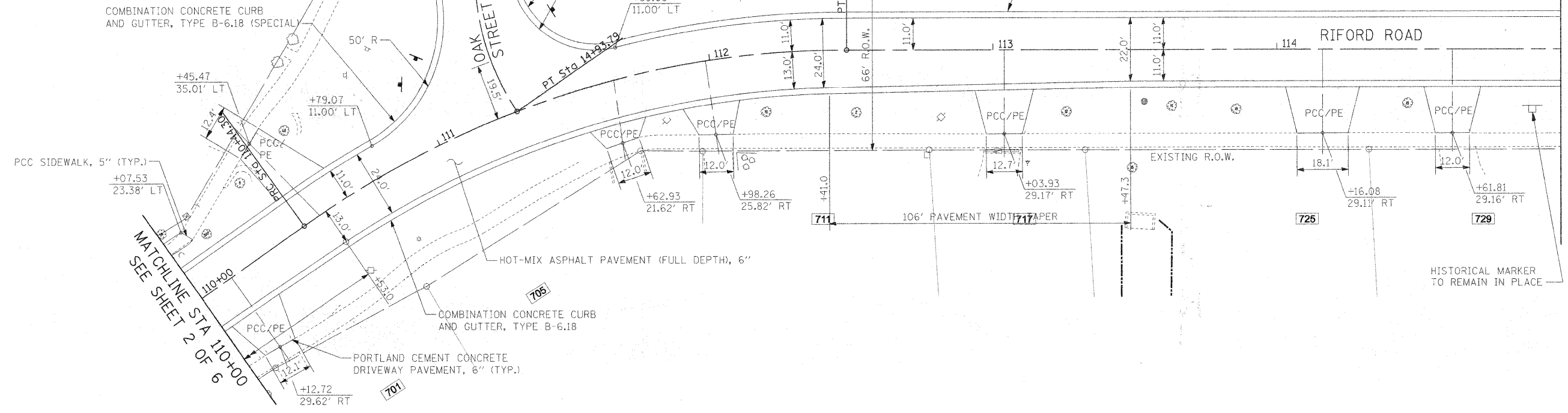


COMBINATION CONCRETE CURB AND GUTTER, TYPE B-6.18 (SPECIAL)

COMBINATION CONCRETE CURB AND GUTTER, TYPE B-6.18

COMBINATION CONCRETE CURB AND GUTTER, TYPE B-6.18

EXISTING R.O.W.

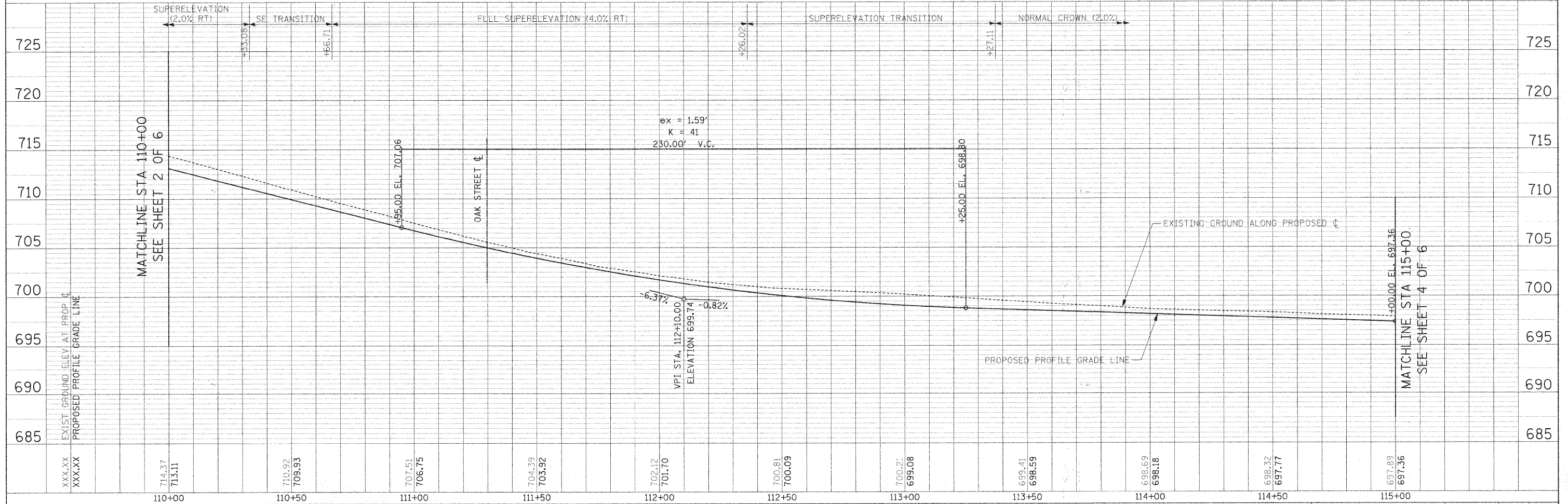


MATCHLINE STA 110+00
SEE SHEET 2 OF 6

MATCHLINE STA 115+00
SEE SHEET 4 OF 6

DATE	
BY	
PLANNED	
DESIGNED	
CHECKED	
DATE	
BY	
PLANNED	
DESIGNED	
CHECKED	
DATE	
BY	

DATE	
BY	
PLANNED	
DESIGNED	
CHECKED	
DATE	
BY	
PLANNED	
DESIGNED	
CHECKED	
DATE	
BY	



FILE NAME =	USER NAME = #USER#	DESIGNED - JMT	REVISED -	STATE OF ILLINOIS DEPARTMENT OF TRANSPORTATION	RIFORD ROAD PLAN AND PROFILE	F.A.U. RTE.	SECTION	COUNTY	TOTAL SHEETS	SHEET NO.
#FILEL#		DRAWN - JAB	REVISED -			05-00068-00-FP	DUPAGE	141	35	
PLLOT SCALE = #SCALE#		CHECKED -	REVISED -			RIFORD ROAD RECONSTRUCTION	CONTRACT NO. 63092			
PLLOT DATE = #DATE#		DATE - 12/01/2009	REVISED -			FED. ROAD DIST. NO. 1 ILLINOIS FED. AID PROJECT				