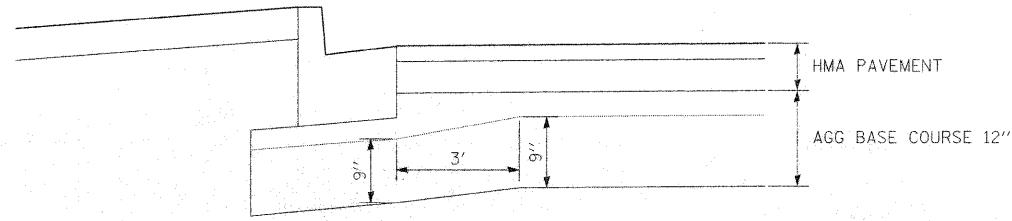


PLAN	SURVEYED	BY	DATE
	PLANNED		
	NOTED		
	CHECKED		
	BY		
	NO.		

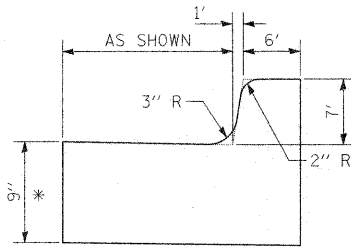
PROFILE	SURVEYED	BY	DATE
	PLANNED		
	NOTED		
	CHECKED		
	BY		
	NO.		



1. REMOVE EXISTING PAVEMENT. PREPARE SUBGRADE FOR INSTALLATION OF AGGREGATE BASE COURSE.
2. INSTALL AGGREGATE BASE COURSE FOR 9" DEPTH UNDER PROPOSED PAVEMENT STRUCTURE AND CURBS, AS SHOWN.
3. INSTALL 3" CAPPING STONE UNDER CURBS.
4. INSTALL CURBS.
5. PLACE AND COMPACT CAPPING STONE TO TOP OF BASE COURSE ELEVATION.

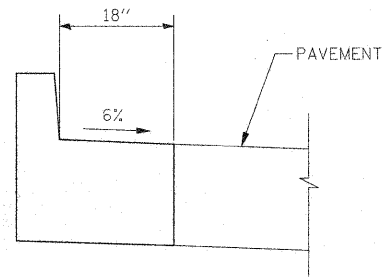
**RIFORD ROAD / OAK STREET  
PAVEMENT SECTION CONSTRUCTION NOTES**

NOT TO SCALE



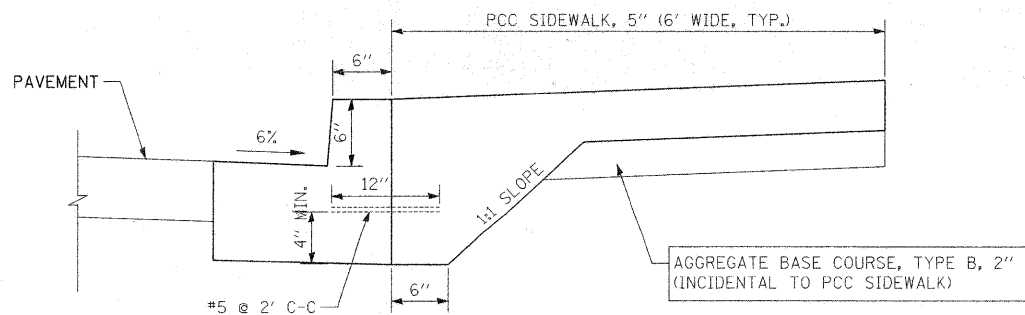
**CURB AND GUTTER  
CONSTRUCTION DETAIL**

\* ST. CHARLES ROAD -- MINIMUM CURB THICKNESS IS 12".



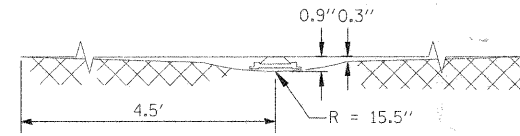
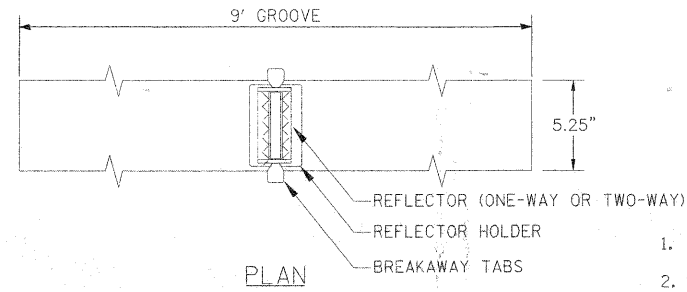
**COMBINATION CONCRETE CURB  
AND GUTTER, TYPE B-6.18 (SPECIAL)**

COMBINATION CONCRETE CURB AND GUTTER, TYPE B-6.18 (SPECIAL) WITH REVERSE PITCH GUTTER FLAG IS USED AT LOCATIONS INDICATED IN THE PLANS.



**PCC SIDEWALK ADJACENT  
TO CURB AND GUTTER**

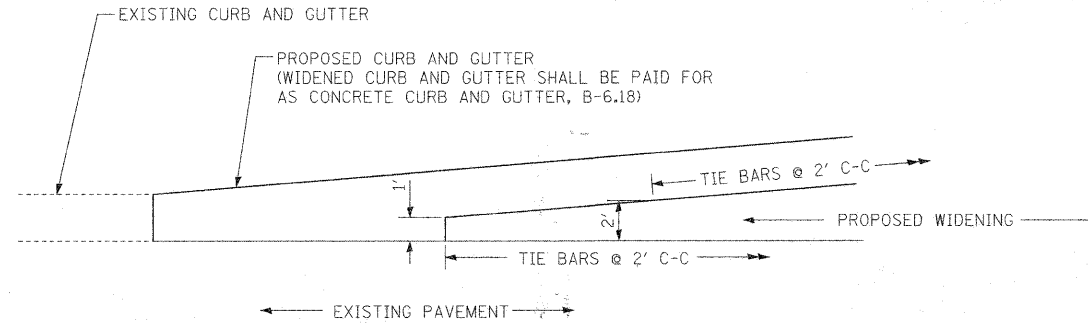
LABOR AND MATERIALS NECESSARY TO CONSTRUCT THE THICKENED PORTION OF THE SIDEWALK ARE INCIDENTAL TO PCC SIDEWALK, 5".



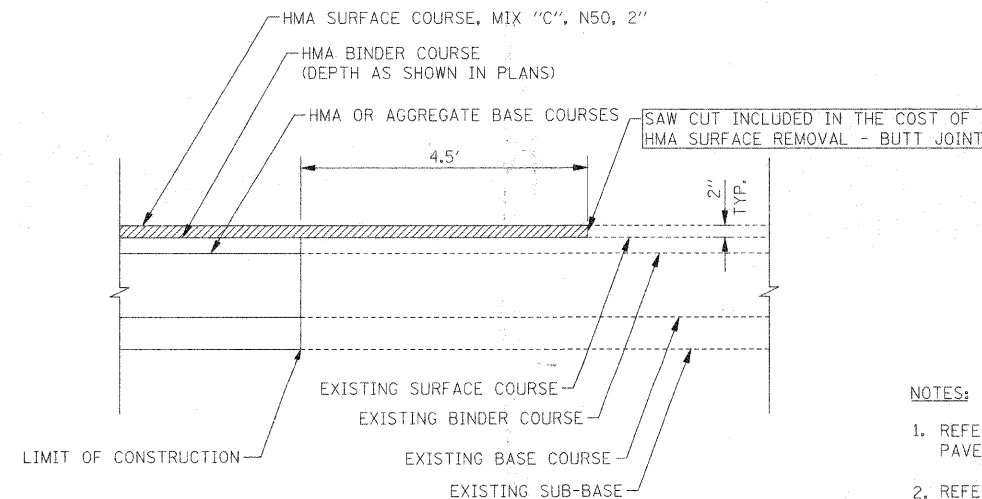
**TYPICAL RECESSED REFLECTIVE  
PAVEMENT MARKERS (DUPAGE COUNTY)**

**NOTES**

1. SAW CUT TO DIMENSIONS SHOWN.
2. SAW CUT AREAS ARE TO BE DRY AND FREE OF MATERIAL THAT ADVERSELY AFFECTS THE ADHESIVE BOND.
3. INSTALL THE REFLECTOR WITH AN APPROVED TWO-COMPONENT EPOXY ADHESIVE. EPOXY SHOULD NOT OBSCURE OR BLOCK THE LENS.
4. REFLECTOR SHALL BE 3M SERIES 190 OR ENGINEER APPROVED EQUIVALENT.
5. THE REFLECTOR HOLDER SHALL BE A MARKERONE SERIES R100 REFLECTOR HOLDER OR ENGINEER APPROVED EQUIVALENT.
6. FOR 1-WAY MARKERS HEADING UPHILL, UPHILL GRIND TAPER MAY BE OMITTED.



**CURB AND GUTTER DETAILS  
AT ENDPOINTS OF WIDENING TAPERS  
(ST. CHARLES ROAD STA. 45+00 AND 55+00 LT.)**



**PAVEMENT BUTT JOINT**

NOT TO SCALE

**NOTES:**

1. REFER TO TYPICAL SECTIONS FOR ADDITIONAL PAVEMENT COMPOSITION INFORMATION.
2. REFER TO REMOVAL AND PROPOSED PLANS FOR LOCATIONS OF BUTT JOINTS.
3. SAW CUTS AND MILLING FOR BUTT JOINT IS CONSIDERED INCLUDED IN THE COST FOR HMA SURFACE REMOVAL - BUTT JOINT.

FILE NAME =	USER NAME = #USER#	DESIGNED - JMT	REVISED -
#FILE#		DRAWN - JMT	REVISED -
	PLOT SCALE = #SCALE#	CHECKED - MAP	REVISED -
	PLOT DATE = #DATE#	DATE - 12/01/2009	REVISED -

**STATE OF ILLINOIS  
DEPARTMENT OF TRANSPORTATION**

**MISCELLANEOUS ROADWAY DETAILS**

SCALE: N.T.S. SHEET NO. 1 OF 3 SHEETS STA. TO STA.

F.A.U. RTE. 2114	SECTION 05-00068-00-FP	COUNTY DUPAGE	TOTAL SHEETS 141	SHEET NO. 44
RIFORD ROAD RECONSTRUCTION			CONTRACT NO. 63092	
FED. ROAD DIST. NO. 1 ILLINOIS FED. AID PROJECT				