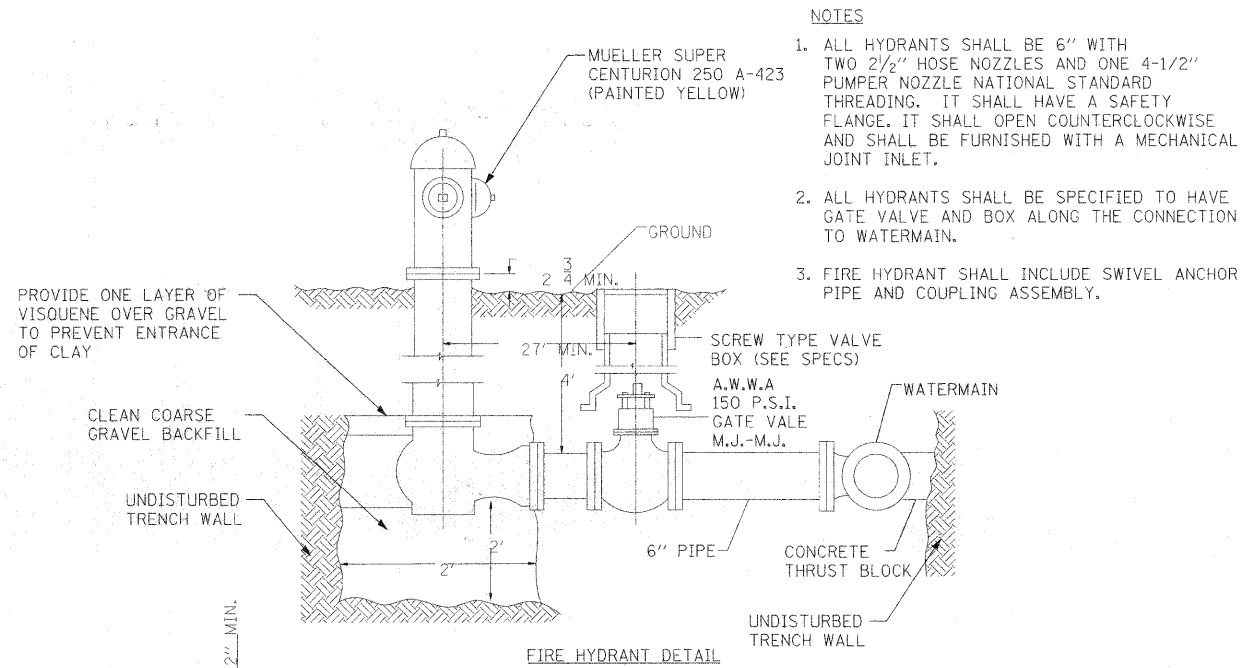
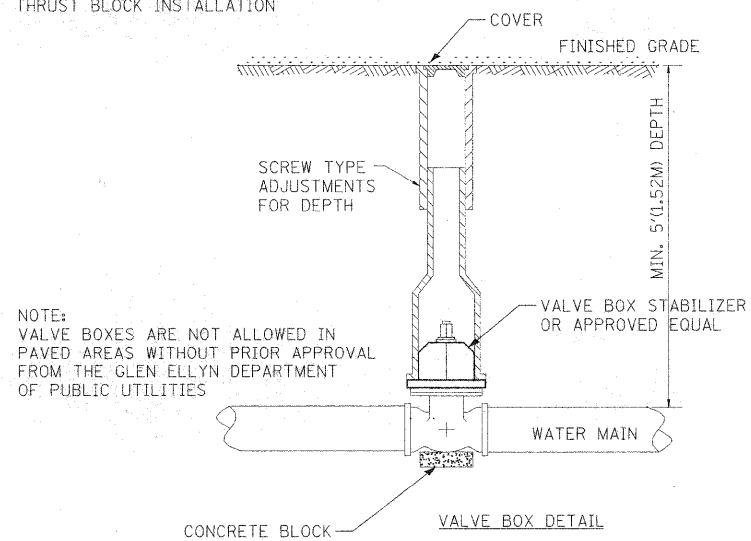
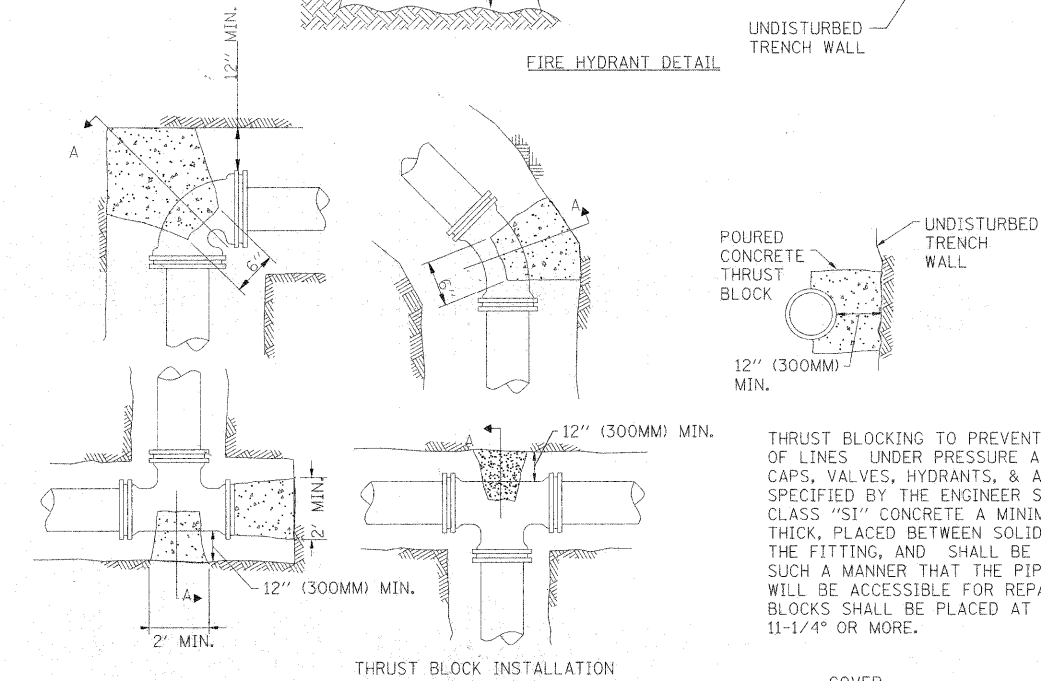


DATE	
BY	
PLAN	
SURVEYED	
PLOTTED	
CHECKED	
BY	
NO. OF WAY CHECKED	
NO.	
CADD FILE NAME	

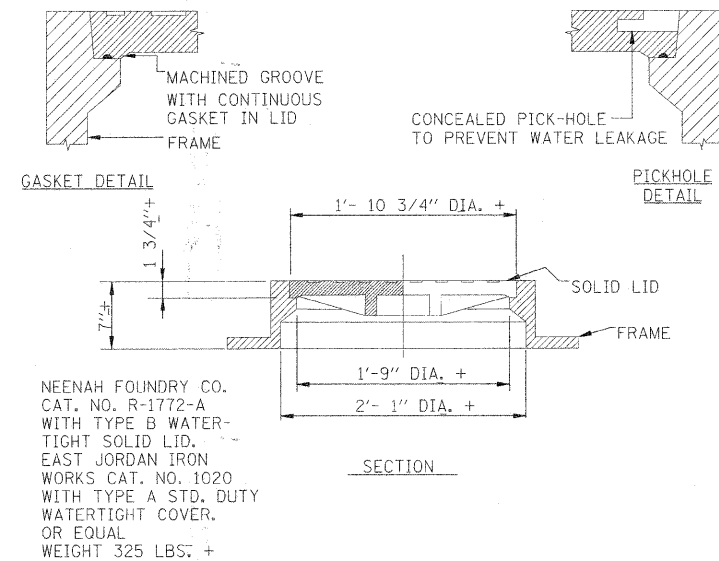
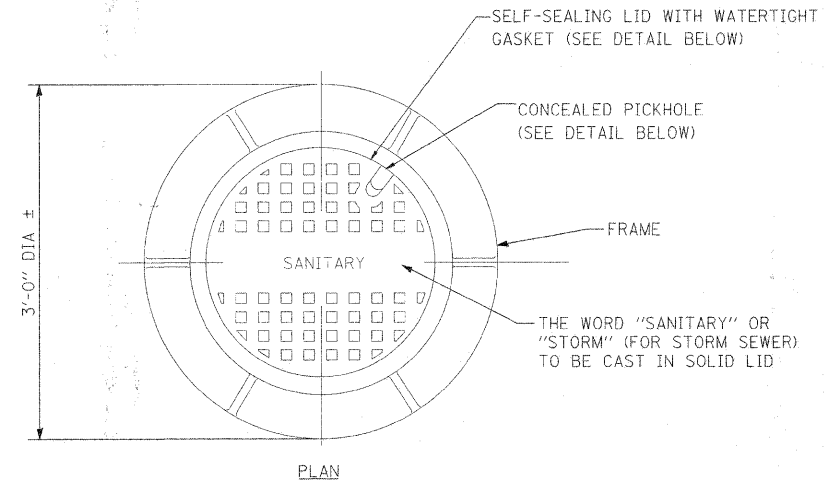
DATE	
BY	
PROFILE	
SURVEYED	
PLOTTED	
CHECKED	
BY	
NO. OF WAY CHECKED	
NO.	
STRUCTURE NOTATION CHRD	



- NOTES**
1. ALL HYDRANTS SHALL BE 6" WITH TWO 2 1/2" HOSE NOZZLES AND ONE 4-1/2" PUMPER NOZZLE NATIONAL STANDARD THREADING. IT SHALL HAVE A SAFETY FLANGE. IT SHALL OPEN COUNTERCLOCKWISE AND SHALL BE FURNISHED WITH A MECHANICAL JOINT INLET.
 2. ALL HYDRANTS SHALL BE SPECIFIED TO HAVE GATE VALVE AND BOX ALONG THE CONNECTION TO WATERMAIN.
 3. FIRE HYDRANT SHALL INCLUDE SWIVEL ANCHOR PIPE AND COUPLING ASSEMBLY.



NOTE:
VALVE BOXES ARE NOT ALLOWED IN PAVED AREAS WITHOUT PRIOR APPROVAL FROM THE GLEN ELLYN DEPARTMENT OF PUBLIC UTILITIES



WATERTIGHT SANITARY MANHOLE FRAME & SOLID LID

FILE NAME #	USER NAME = #USER#	DESIGNED -	REVISED -	STATE OF ILLINOIS DEPARTMENT OF TRANSPORTATION	DRAINAGE & UTILITY DETAILS	F.A.U. RTE.	SECTION	COUNTY	TOTAL SHEETS	SHEET NO.
#FILE#	PLOT SCALE = #SCALE#	DRAWN -	REVISED -			215	05-00068-00-FP	DUPAGE	141	47
	PLOT DATE = #DATE#	CHECKED -	REVISED -			RIFORD ROAD RECONSTRUCTION	CONTRACT NO. 63092			
		DATE = 12/01/2009	REVISED -			FED. ROAD DIST. NO. 1 ILLINOIS FED. AID PROJECT				
					SCALE: N.T.S.	SHEET NO. 1	OF 1 SHEETS	STA. TO STA.		