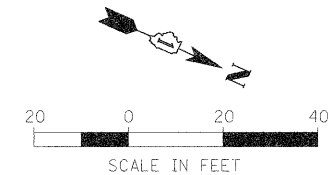
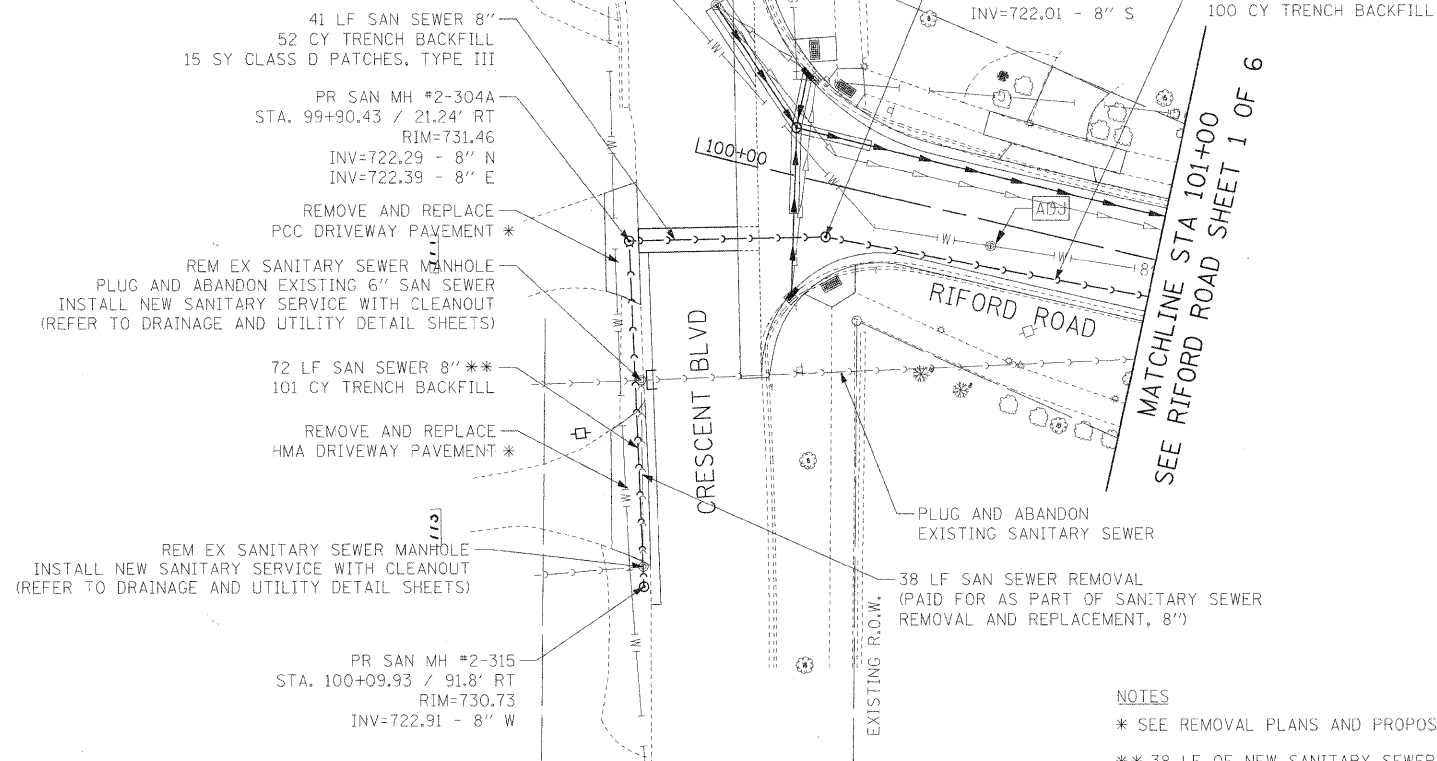
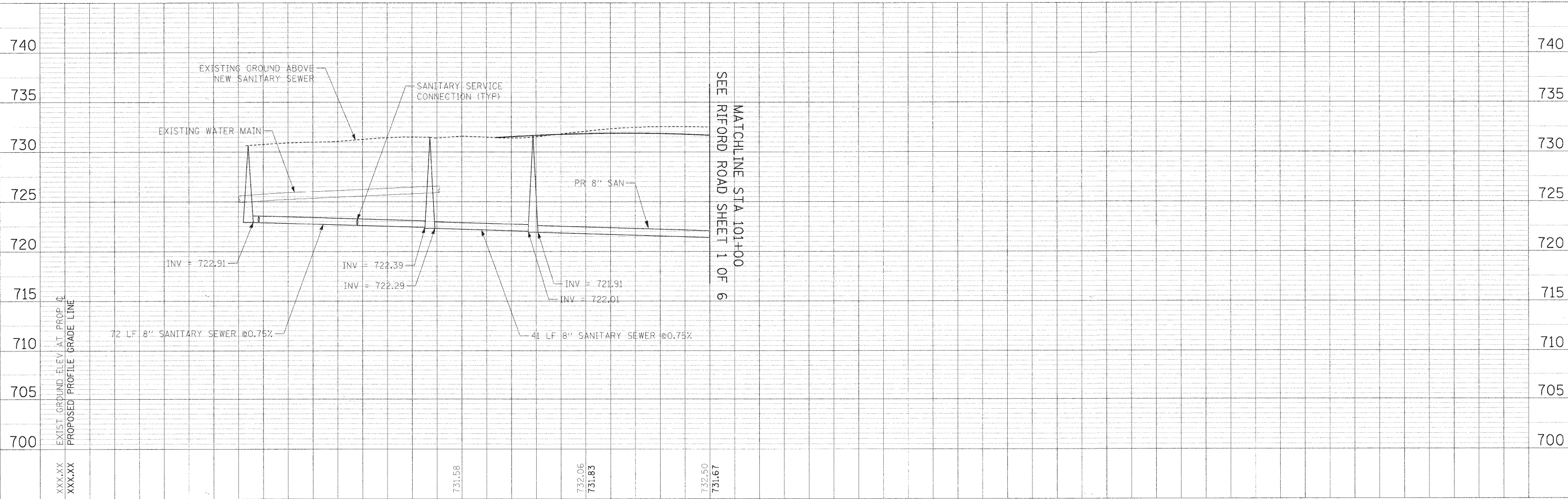


NOTE:
CONTRACTOR SHALL MAINTAIN EXISTING SERVICE
DURING CONSTRUCTION OF NEW SANITARY SEWER.



NOTES

- * SEE REMOVAL PLANS AND PROPOSED PLAN AND PROFILE FOR PAY ITEMS.
- ** 38 LF OF NEW SANITARY SEWER PAID FOR AS PART OF
SANITARY SEWER REMOVAL AND REPLACEMENT, 8";
REMAINING 34 LF PAID FOR AS SANITARY SEWERS, PVC, 8".



PLAN	SURVEYED	DATE
	PLOTTED	
	NOTED	
	BY	
	NO. OF WAYS CHECKED	
	CADD FILE NAME	

PROFILE	SURVEYED	DATE
	PLOTTED	
	NOTED	
	BY	
	NO. OF WAYS CHECKED	
	STRUCTURE NOTATIONS CHECKED	

FILE NAME =	USER NAME = #USER#	DESIGNED - MK	REVISED -	STATE OF ILLINOIS DEPARTMENT OF TRANSPORTATION	RIFORD AT CRESCENT — UTILITY PLAN AND PROFILE	F.A.U. RTE. 2315	SECTION 05-00068-00-FP	COUNTY DUPAGE	TOTAL SHEETS 141	SHEET NO. 61	
#FILEL#		DRAWN - DC	REVISED -			SCALE: 1"=20'	SHEET NO. 1 OF 1 SHEETS	STA. TO STA. 101+00.00	RIFORD ROAD RECONSTRUCTION CONTRACT NO. 63092		
PLOT SCALE = #SCALE#		CHECKED - RLP	REVISED -			FED. ROAD DIST. NO. 1 ILLINOIS FED. AID PROJECT					
PLOT DATE = #DATE#		DATE - 12/01/2009	REVISED -								