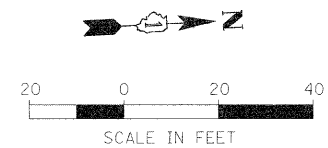


NOTE 1:
 STA. 116+78 RT
 CHIDESTER AVE 44' W OF RIFORD C
 2 EA. VALVE VAULTS TY. A, 5' DIA
 W/TY. 1 FR & CLOSED LID
 2 EA. WATER VALVES 8"
 90 LF D.I.W.M. 8"
 82 CY TRENCH BACKFILL
 26 SQ YD CLASS D PATCHES, TYPE IV

NOTE 2:
 GRAND AVE 41' WEST
 OF RIFORD C
 VALVE VAULT TY. A, 5' DIA
 WATER VALVE 12"
 12"x4" REDUCER
 2 EA 4" DIA, 45° BEND
 24 LF 4" D.I.W.M.
 21 C.Y. TRENCH BACKFILL

NOTE 3:
 STA. 116+22 LT
 VALVE VAULT
 TY. A, 5' DIA
 W/TY. 1 FR & CLOSED LID
 WATER VALVE 8"
 125 LF D.I.W.M. 8"
 94 CY TRENCH BACKFILL

NOTE 2:
 STA. 117+22
 1 EA. VALVE VAULTS TY. A, 5' DIA
 W/TY. 1 FR & CLOSED LID
 1 EA. WATER VALVES 12"

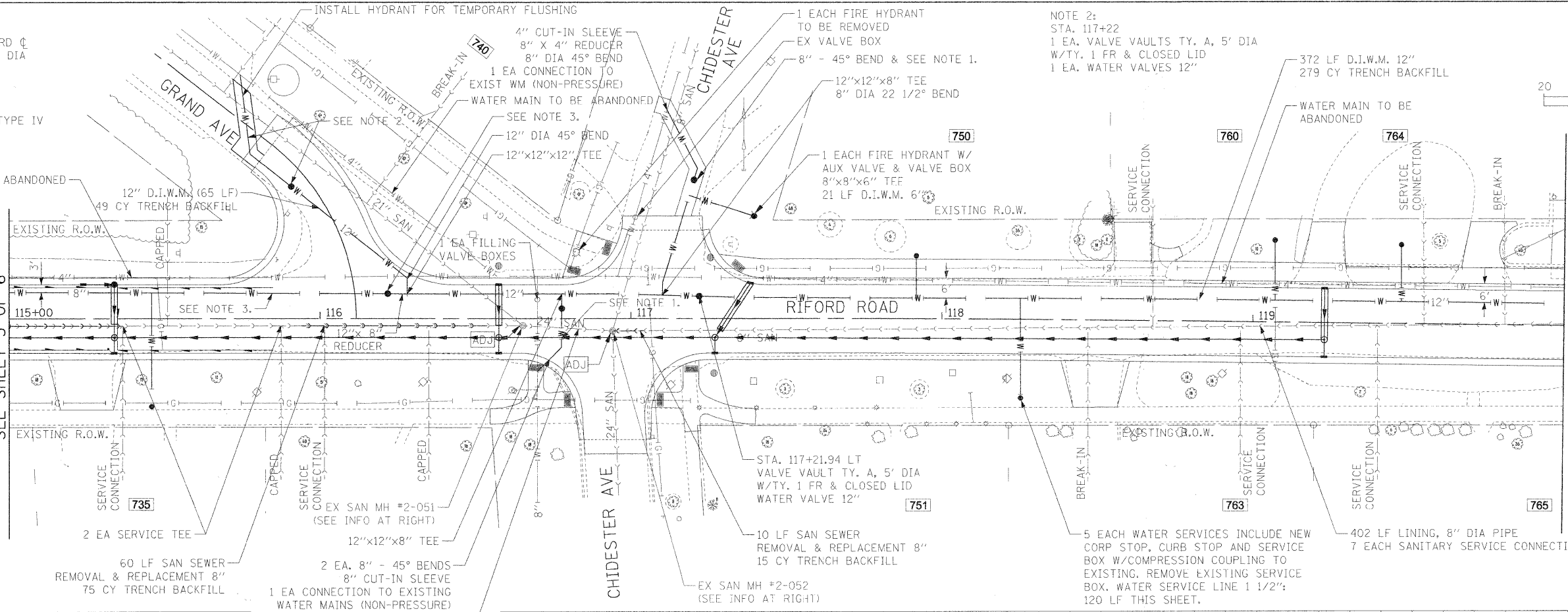


DATE	
BY	
REVISION	
NO.	
DATE	
BY	
REVISION	
NO.	

DATE	
BY	
REVISION	
NO.	
DATE	
BY	
REVISION	
NO.	

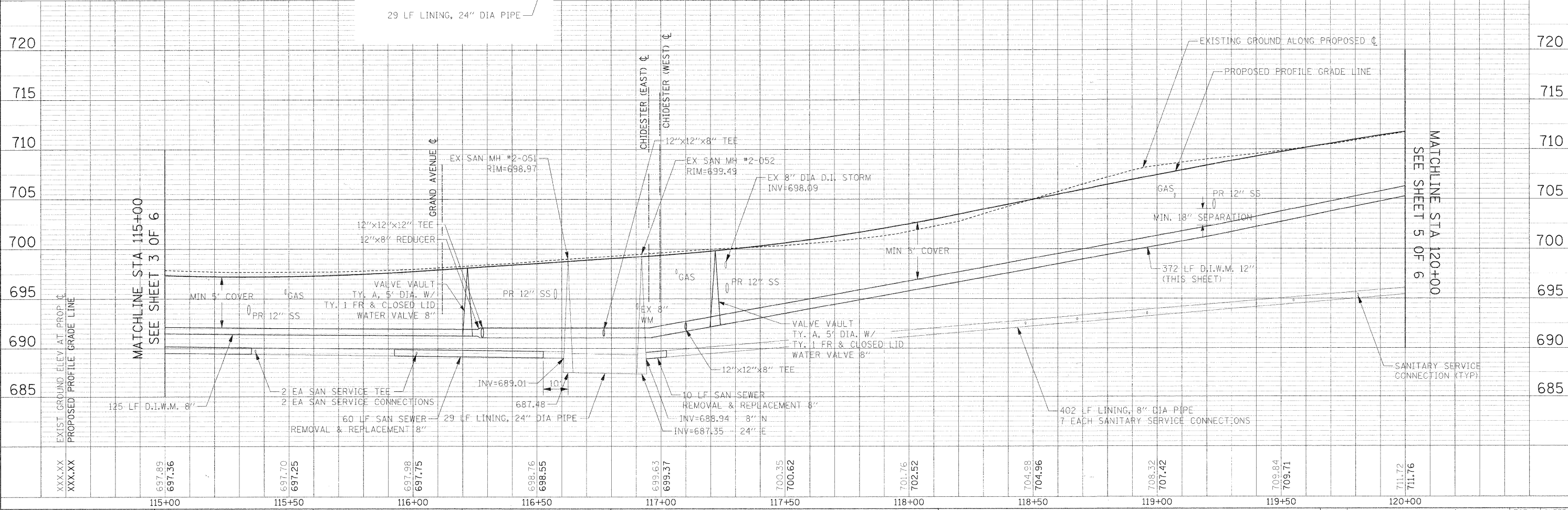
MATCHLINE STA 115+00
 SEE SHEET 3 OF 6

MATCHLINE STA 120+00
 SEE SHEET 5 OF 6



EX SAN MH #2-051
 RIM=698.97
 INV=687.48 - 24" N
 INV=688.87 - 21" SW
 INV=689.01 - 8" S

EX SAN MH #2-052
 RIM=699.49
 INV=688.94 - 8" N
 INV=688.59 - 8" NW
 INV=687.27 - 24" S
 INV=687.35 - 24" E



FILE NAME =	USER NAME = #USER#	DESIGNED - MK	REVISED -	F.A.U. RTE.	SECTION	COUNTY	TOTAL SHEETS	SHEET NO.	
#FILE#		DRAWN - DC	REVISED -	2995	05-00068-00-FP	DUPAGE	141	65	
		CHECKED - RLP	REVISED -	RIFORD ROAD RECONSTRUCTION		CONTRACT NO. 63092			
		DATE - 12/01/2009	REVISED -	SCALE: 1"=20'		SHEET NO. 4 OF 6 SHEETS STA. 115+00.00 TO STA. 120+00.00			
				STATE OF ILLINOIS DEPARTMENT OF TRANSPORTATION		RIFORD ROAD UTILITY PLAN AND PROFILE			
				SCALE: 1"=20'		FED. ROAD DIST. NO. 1 ILLINOIS FED. AID PROJECT			