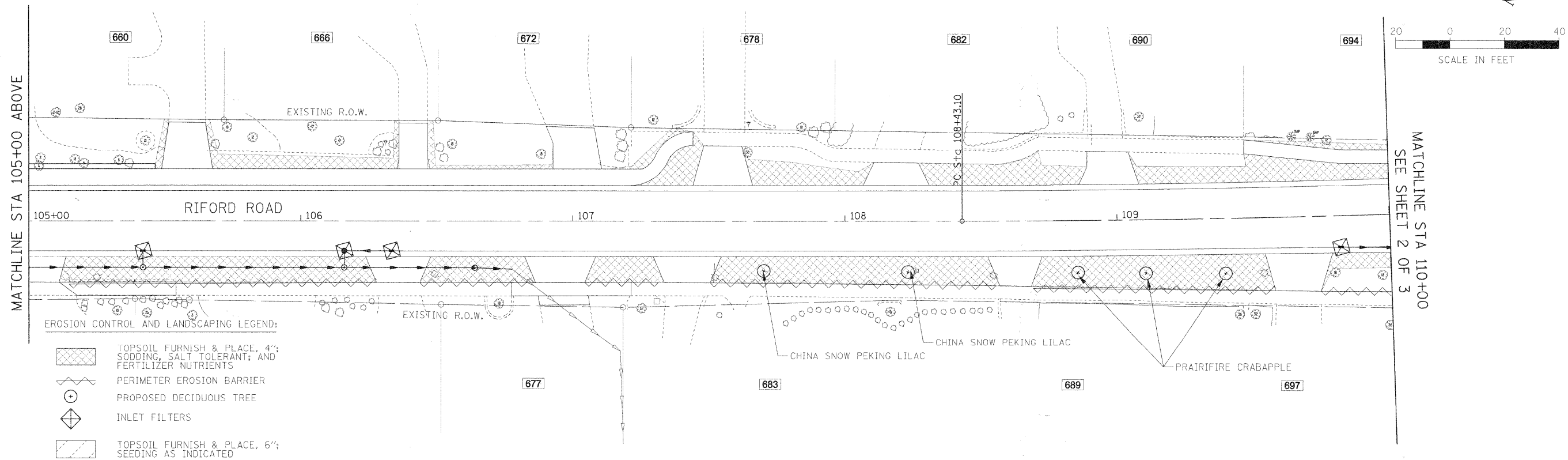
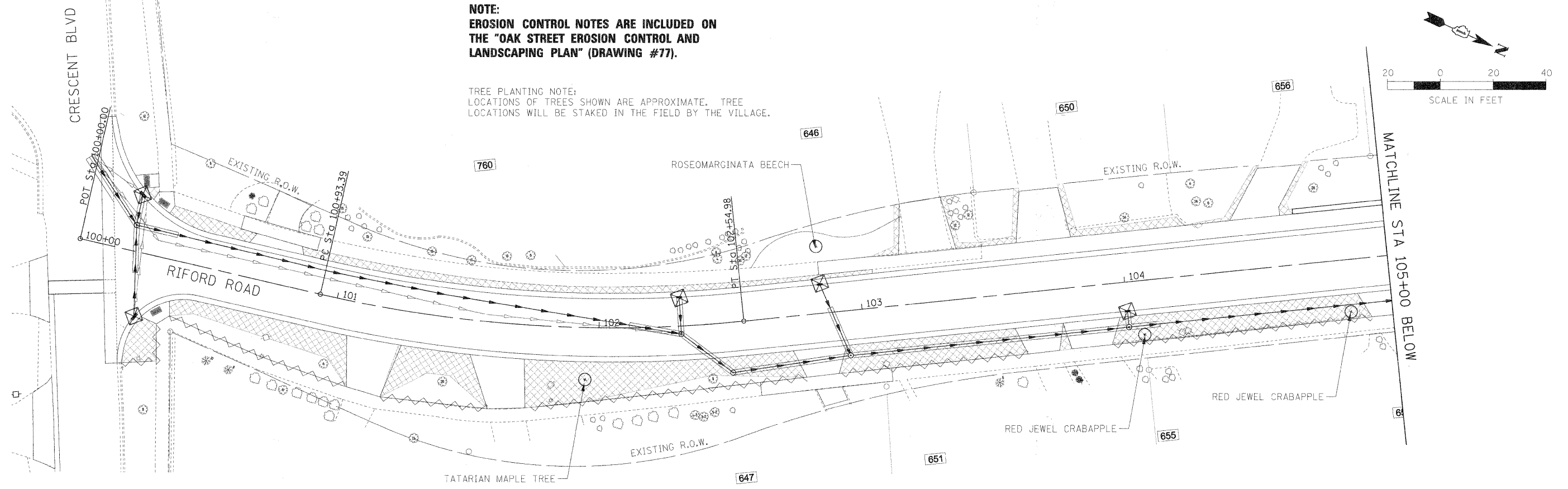


PLAN	SURVEYED	DATE
	PLOTTED	
	NOTED	
	BY	
	NO.	

PROFILE	SURVEYED	DATE
	PLOTTED	
	NOTED	
	BY	
	NO.	

NOTE:
EROSION CONTROL NOTES ARE INCLUDED ON
THE "OAK STREET EROSION CONTROL AND
LANDSCAPING PLAN" (DRAWING #77).

TREE PLANTING NOTE:
LOCATIONS OF TREES SHOWN ARE APPROXIMATE. TREE
LOCATIONS WILL BE STAKED IN THE FIELD BY THE VILLAGE.



EROSION CONTROL AND LANDSCAPING LEGEND:

- TOPSOIL FURNISH & PLACE, 4"; SODDING, SALT TOLERANT; AND FERTILIZER NUTRIENTS
- PERIMETER EROSION BARRIER
- PROPOSED DECIDUOUS TREE
- INLET FILTERS
- TOPSOIL FURNISH & PLACE, 6"; SEEDING AS INDICATED

*INSTALL PERIMETER EROSION CONTROL
OUTSIDE OF WETLAND LIMITS

FILE NAME #	USER NAME # USER#	DESIGNED - JMT	REVISED -	STATE OF ILLINOIS DEPARTMENT OF TRANSPORTATION	RIFORD ROAD EROSION CONTROL AND LANDSCAPING PLAN	F.A.U. RTE 2315	SECTION 05-00068-00-FP	COUNTY DUPAGE	TOTAL SHEETS 141	SHEET NO. 72
#FILEL#	PLOT SCALE = #SCALE#	CHECKED - MAP	REVISED -			SCALE: 1"=20'	SHEET NO. 1 OF 3 SHEETS	STA. 100+00.00 TO STA. 110+00.00	RIFORD ROAD RECONSTRUCTION FED. ROAD DIST. NO. 1 ILLINOIS	CONTRACT NO. 63092
	PLOT DATE = #DATE#	DATE - 12/01/2009	REVISED -							