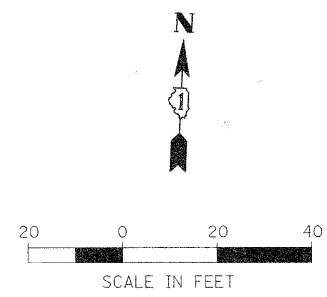
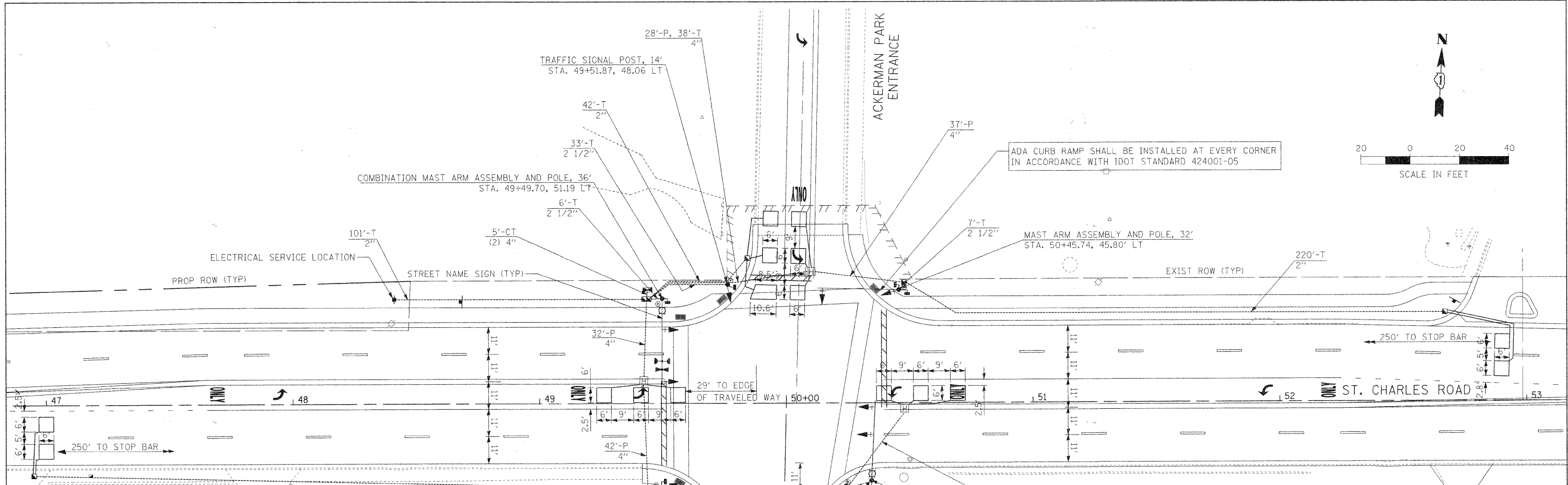


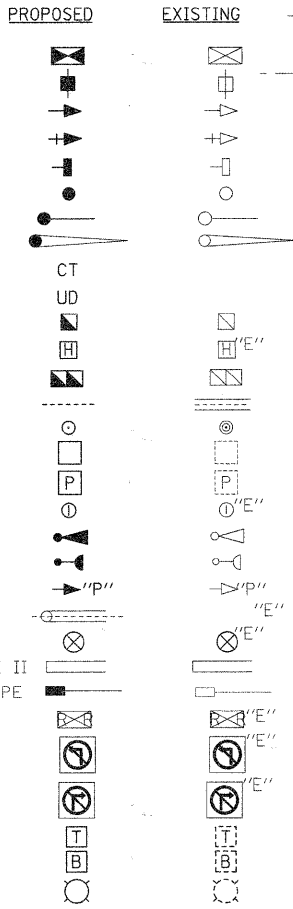
DATE	
BY	
PLAN	
NO.	
NO.	
NO.	
NO.	
NO.	
NO.	
NO.	

DATE	
BY	
PROFILE	
NO.	
NO.	
NO.	
NO.	
NO.	
NO.	
NO.	



TRAFFIC SIGNAL LEGEND

- CONTROLLER
- SERVICE INSTALLATION
- SIGNAL HEAD
- SIGNAL HEAD WITH BACKPLATE
- SIGNAL HEAD, PEDESTRIAN
- SIGNAL POST
- MAST ARM ASSEMBLY AND POLE, STEEL
- MAST ARM ASSEMBLY AND POLE, ALUMINUM
- COMMON TRENCH
- UNIT DUCT
- HANDHOLE
- HEAVY DUTY HANDHOLE
- DOUBLE HANDHOLE
- G.S. CONDUIT IN TRENCH OR PUSHED
- PEDESTRIAN PUSHBUTTON DETECTOR
- DETECTOR LOOP
- PREFORMED DETECTOR LOOP
- CAST IRON JUNCTION BOX
- EMERGENCY VEHICLE SYSTEM DETECTOR
- CONFIRMATION BEACON
- SIGNAL HEAD OPTICALLY PROGRAMMED
- CONDUIT SPLICE
- WOOD POLE
- RACEWAY FOR MAGNETIC DETECTOR, TYPE I OR TYPE II
- VEHICLE DETECTOR, NON COMPENSATED MAGNETIC TYPE
- RAILROAD CONTROL CABINET
- ILLUMINATED SIGN, FIBER OPTIC
- "NO LEFT TURN"
- ILLUMINATED SIGN, FIBER OPTIC
- "NO RIGHT TURN"
- TELEPHONE CONNECTION
- UNINTERRUPTIBLE POWER SUPPLY
- STREET LIGHT



FILE NAME =	USER NAME = #USER#	DESIGNED -	REVISED -	STATE OF ILLINOIS DEPARTMENT OF TRANSPORTATION	RIFORD ROAD /ST. CHARLES ROAD TRAFFIC SIGNAL PLAN	F.A.U. RTE.	SECTION	COUNTY	TOTAL SHEETS	SHEET NO.
#FILEL#		DRAWN -	REVISED -			2995	05-00068-00-FP	DUPAGE	141	86
		CHECKED -	REVISED -			RIFORD ROAD RECONSTRUCTION CONTRACT NO. 63092				
		DATE = 12/01/2009	REVISED -	SCALE:	SHEET NO.	OF	SHEETS	STA.	TO	STA.
						FED. ROAD DIST. NO. 1 ILLINOIS FED. AID PROJECT				