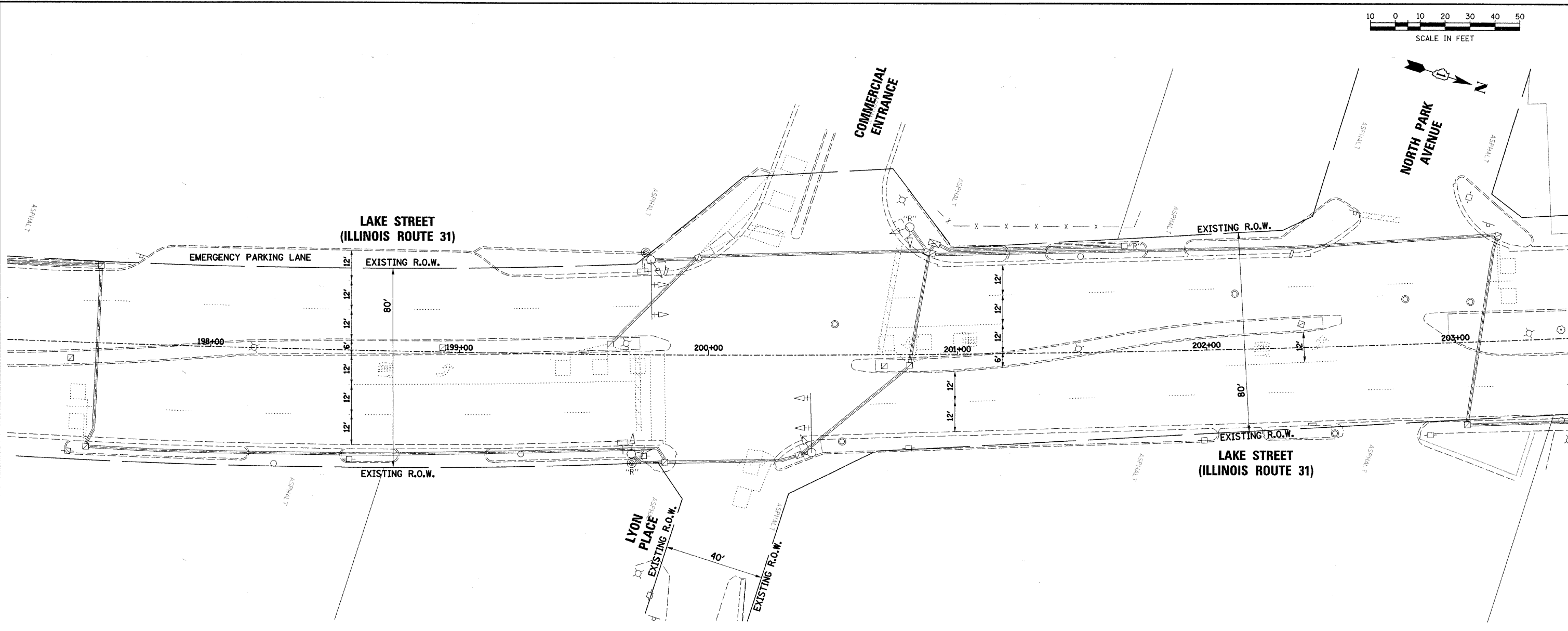


PLAN	SURVEYED	DATE
	PLOTTED	
	CHECKED	
	BY	
	NO.	
	FILE NAME	

PROFILE	SURVEYED	DATE
	PLOTTED	
	CHECKED	
	BY	
	NO.	
	FILE NAME	



**NOTES:**  
 1. ALL EXISTING TRAFFIC SIGNALS, ELECTRIC CABLE AND RACEWAYS SHALL REMAIN IN PLACE UNTIL ALL THE PROPOSED TRAFFIC SIGNAL EQUIPMENT HAS BEEN INSTALLED. PRIOR TO DISCONNECTION OF THE EXISTING TRAFFIC SIGNAL EQUIPMENT, THE DISTRICT 1 AREA TRAFFIC SIGNAL ENGINEER SHALL BE NOTIFIED AT (847) 705-4424 A MINIMUM OF 72 HOURS IN ADVANCE OF THE TRAFFIC SIGNAL INSPECTION AND ACTIVATION.

2. THE CONTRACTOR SHALL BE RESPONSIBLE FOR MAINTAINING ALL EXISTING TRAFFIC SIGNAL OPERATIONS AT ALL TIMES DURING CONSTRUCTION.

THE EXISTING CONDUITS AND VEHICLE DETECTORS (WHERE APPLICABLE) SHALL BE ABANDONED.

THE FOLLOWING ITEMS SHALL BE REMOVED BY THE CONTRACTOR AND SHALL BE DISPOSED OF BY HIM OUTSIDE THE RIGHT-OF-WAY AT HIS EXPENSE. THE SALVAGE VALUE OF THE REMOVED EQUIPMENT SHALL BE REFLECTED IN THE CONTRACT BID PRICE. THIS WORK SHALL BE PAID FOR AT THE CONTRACT UNIT PRICE EACH FOR REMOVE EXISTING TRAFFIC SIGNAL EQUIPMENT (SEE SCHEDULE OF QUANTITIES FOR REMOVAL ITEMS TO BE PAID FOR SEPARATELY).

- 2 EACH TRAFFIC SIGNAL POSTS
- 10 EACH TRAFFIC SIGNAL HEADS
- 4 EACH TRAFFIC SIGNAL BACKPLATES
- 2 EACH PEDESTRIAN SIGNAL HEADS
- 2 EACH PEDESTRIAN PUSH BUTTONS
- 1 EACH SERVICE INSTALLATION

THE FOLLOWING EXISTING TRAFFIC SIGNAL EQUIPMENT SHALL BE REMOVED BY THE CONTRACTOR, SHALL BECOME THE PROPERTY OF THE CITY OF AURORA AND SHALL BE DELIVERED BY THE CONTRACTOR TO THE MAINTENANCE FACILITY DESIGNATED BY THE CITY. THIS WORK SHALL BE INCLUDED IN THE CONTRACT UNIT PRICE FOR REMOVE EXISTING TRAFFIC SIGNAL EQUIPMENT.

- 1 EACH TRAFFIC SIGNAL CONTROLLER

FILE NAME = ... \fin.dwg\690_2.sjg\0a_lyon.dgn	USER NAME = _USER_	DESIGNED - DRAWN <i>JMR</i>	REVISED - REVISED -
PLOT SCALE = #SCALE#	CHECKED <i>JRS</i>	REVISED - REVISED -	
PLOT DATE = 3/11/2010	DATE -	REVISED - REVISED -	

**STATE OF ILLINOIS  
DEPARTMENT OF TRANSPORTATION**

**EXISTING TRAFFIC SIGNAL EQUIPMENT TO BE REMOVED  
LYON PLACE**

F.A.U. RTE. 3902	SECTION 05-00258-00-TL	COUNTY KANE	TOTAL SHEETS 61	SHEET NO. 40
FED. ROAD DIST. NO. ILLINOIS FED. AID PROJECT			CONTRACT NO. 63251	

SCALE:	SHEET NO.	OF	SHEETS	STA.	TO STA.
--------	-----------	----	--------	------	---------