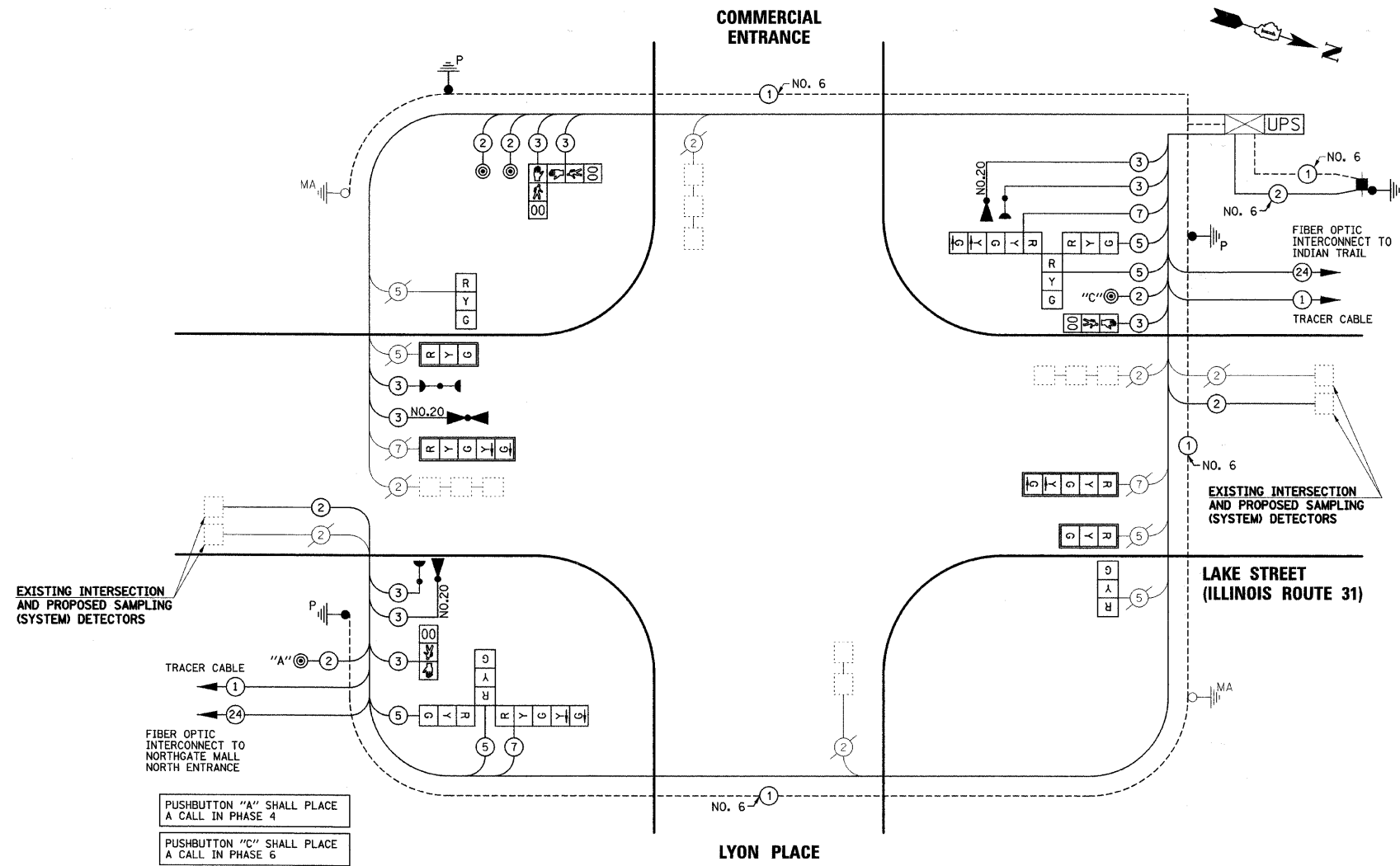


PLAN	SURVEYED	DATE
	PLOTTED	
	CHECKED	
	BY	
	NO.	
	DATE	

PROFILE	SURVEYED	DATE
	PLOTTED	
	CHECKED	
	BY	
	NO.	
	DATE	



PUSHBUTTON "A" SHALL PLACE A CALL IN PHASE 4
 PUSHBUTTON "C" SHALL PLACE A CALL IN PHASE 6

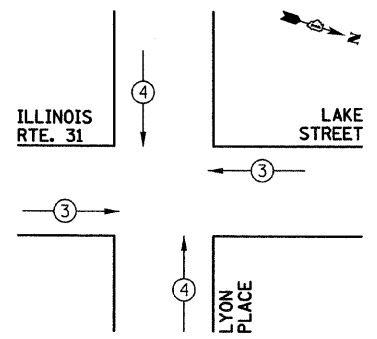
SCHEDULE OF QUANTITIES

PAY ITEM DESCRIPTION	UNIT	LYON PLACE
DETECTABLE WARNINGS	SQ FT	42
COMBINATION CURB AND GUTTER REMOVAL	FOOT	10
COMBINATION CONCRETE CURB AND GUTTER, TYPE B-6.12	FOOT	10
THERMOPLASTIC PAVEMENT MARKING - LINE 12"	FOOT	281
THERMOPLASTIC PAVEMENT MARKING - LINE 24"	FOOT	117
PAVEMENT MARKING REMOVAL	SQ FT	263
CONDUIT IN TRENCH, 2 1/2" DIA., GALVANIZED STEEL	FOOT	21
TRENCH AND BACKFILL FOR ELECTRICAL WORK	FOOT	21
MAINTENANCE OF EXISTING TRAFFIC SIGNAL INSTALLATION	EACH	1
FULL-ACTUATED CONTROLLER IN EXISTING CABINET	EACH	1
ELECTRIC CABLE IN CONDUIT, SIGNAL NO. 14 2C	FOOT	522.5
ELECTRIC CABLE IN CONDUIT, SIGNAL NO. 14 3C	FOOT	1012.5
ELECTRIC CABLE IN CONDUIT, SIGNAL NO. 14 5C	FOOT	535
ELECTRIC CABLE IN CONDUIT, SIGNAL NO. 14 7C	FOOT	267.5
ELECTRIC CABLE IN CONDUIT, LEAD-IN, NO. 14 1 PAIR	FOOT	697.5
ELECTRIC CABLE IN CONDUIT, SERVICE, NO. 6 2 C	FOOT	94.5
TRAFFIC SIGNAL POST, GALVANIZED STEEL 10 FT.	EACH	1
TRAFFIC SIGNAL POST, GALVANIZED STEEL 18 FT.	EACH	2
CONCRETE FOUNDATION, TYPE A	FOOT	8
DRILL EXISTING HANDHOLE	EACH	3
SIGNAL HEAD, LED, 1-FACE, 3-SECTION, MAST-ARM MOUNTED	EACH	2
SIGNAL HEAD, LED, 1-FACE, 3-SECTION, BRACKET MOUNTED	EACH	2
SIGNAL HEAD, LED, 1-FACE, 5-SECTION, MAST-ARM MOUNTED	EACH	2
SIGNAL HEAD, LED, 3-FACE, 2-3 SECTION, 1-5 SECTION BRACKET MOUNTED	EACH	2
PEDESTRIAN SIGNAL HEAD, LED, 1-FACE, BRACKET MOUNTED WITH COUNTDOWN TIMER	EACH	2
PEDESTRIAN SIGNAL HEAD, LED, 2-FACE, BRACKET MOUNTED WITH COUNTDOWN TIMER	EACH	1
TRAFFIC SIGNAL BACKPLATE, LOUVERED, ALUMINUM	EACH	4
INDUCTIVE LOOP DETECTOR	EACH	2
LIGHT DETECTOR	EACH	3
LIGHT DETECTOR AMPLIFIER	EACH	1
PEDESTRIAN PUSH-BUTTON	EACH	4
REMOVE ELECTRIC CABLE FROM CONDUIT	FOOT	1409.5
REMOVE EXISTING TRAFFIC SIGNAL EQUIPMENT	EACH	1
REMOVE EXISTING CONCRETE FOUNDATION	EACH	2
SERVICE INSTALLATION - POLE MOUNTED	EACH	1
PAINT TRAFFIC SIGNAL POST	EACH	2
UNINTERRUPTIBLE POWER SUPPLY	EACH	1
ELECTRIC CABLE IN CONDUIT, GROUNDING, NO. 6 1C	FOOT	530
ELECTRIC CABLE IN CONDUIT NO. 20 3/C, TWISTED, SHIELDED	FOOT	462
SIDEWALK REMOVAL AND REPLACEMENT	SQ FT	540
GROUND EXISTING HANDHOLE FRAME AND COVER	EACH	6

I.D.O.T TRAFFIC SIGNAL INSTALLATION ELECTRICAL SERVICE REQUIREMENTS					
TYPE	NO. LAMPS	WATTAGE		% OPERATION	TOTAL WATTAGE
		INCAND.	LED		
SIGNAL (RED)	12	17		0.50	102
(YELLOW)	12		25	0.25	75
(GREEN)	12		15	0.25	45
ARROW	8		12	0.10	9.6
PED. SIGNAL	4		25	1.00	100
CONTROLLER	1		100	1.00	100
UPS	1		25	1.00	25
TOTAL =					456.6

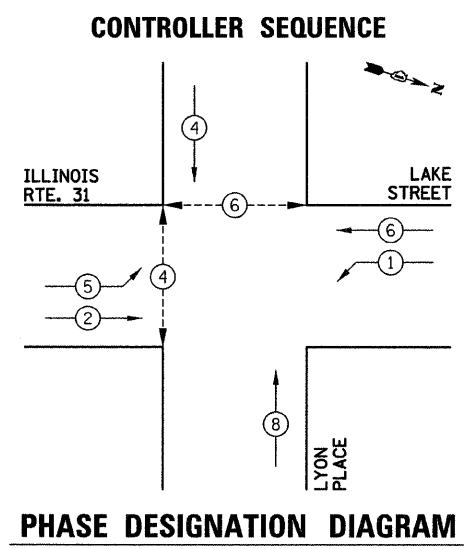
ENERGY COSTS TO: CITY OF AURORA
 44 E. DOWNER PLACE
 AURORA, ILLINOIS 60507-2067

ENERGY SUPPLY CONTACT: MARK SCHERIBEL
 PHONE: (630) 723-2128
 COMPANY: COMMONWEALTH EDISON



EMERGENCY VEHICLE PREEMPTION SEQUENCE

PROPOSED EMERGENCY VEHICLE PREEMPTORS	
PROPOSED EMERGENCY VEHICLE PREEMPTORS	3 4
MOVEMENT	← → ↑ ↓



CONTROLLER SEQUENCE LEGEND

- ← ⊕ → DUAL ENTRY PHASE
- ← ⊕ → SINGLE ENTRY PHASE
- ← ⊕ OL → OVERLAP
- * NUMBER REFERRING TO ASSOCIATED PHASE
- ← ⊕ → PEDESTRIAN PHASE

THE TRAFFIC SIGNAL CONTROL EQUIPMENT FOR THIS PROJECT SHALL BE "ECONOLITE" TO MATCH THE EXISTING ADJACENT SYSTEM.

THE EMERGENCY VEHICLE PREEMPTION EQUIPMENT FOR THIS PROJECT SHALL BE OPTICOM AS REQUIRED BY THE CITY OF AURORA.