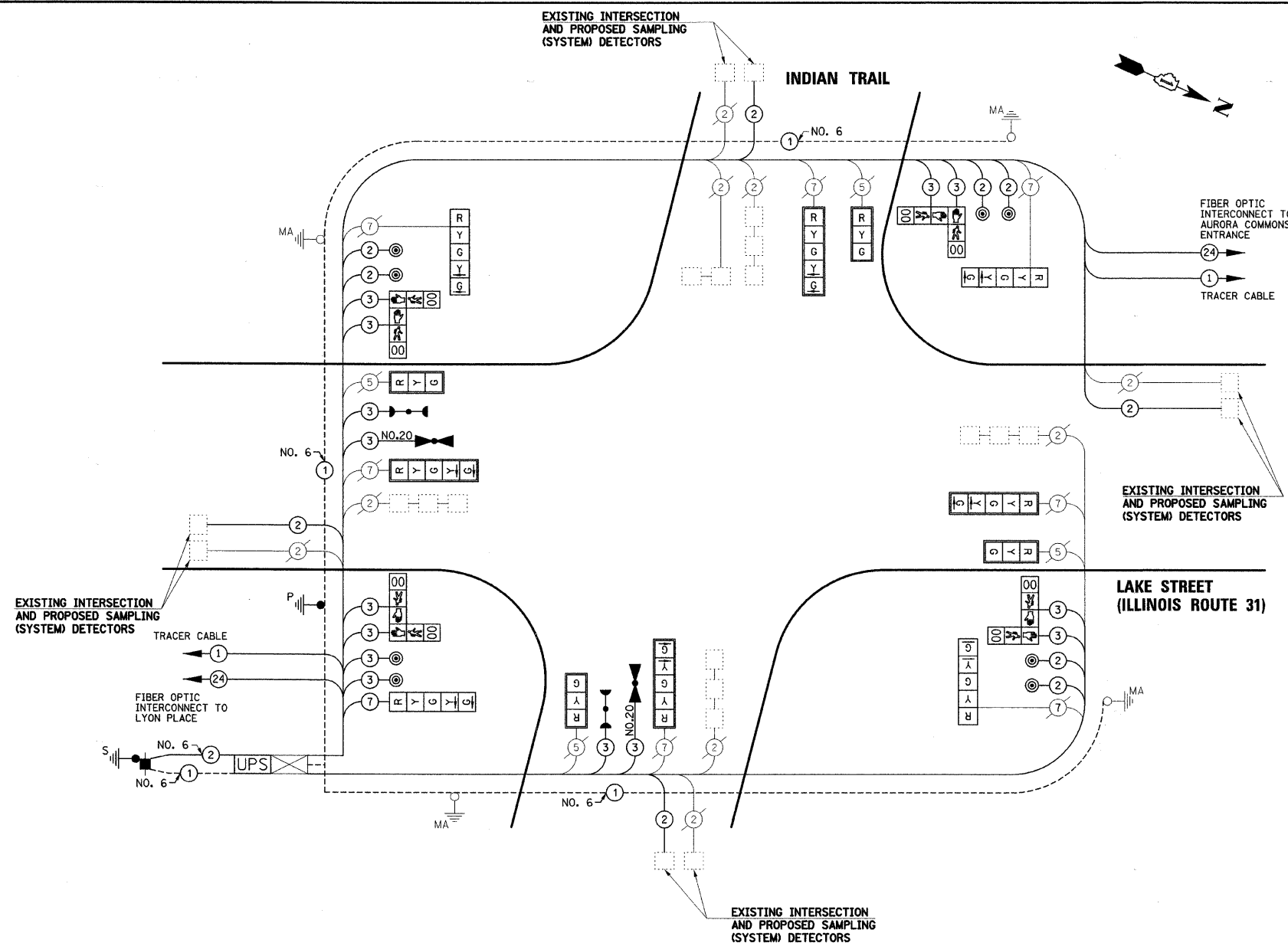


PLAN	SURVEYED	DATE
	PLOTTED	
	CHECKED	
	BY	
	NO.	
	DATE	

PROFILE	SURVEYED	DATE
	PLOTTED	
	CHECKED	
	BY	
	NO.	
	DATE	



SCHEDULE OF QUANTITIES

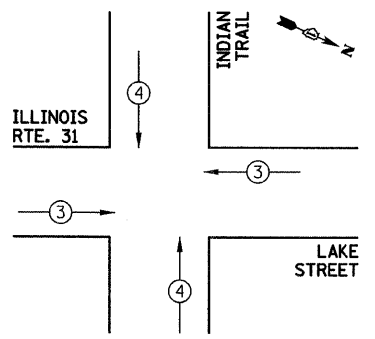
PAY ITEM DESCRIPTION	UNIT	INDIAN TRAIL
THERMOPLASTIC PAVEMENT MARKING - LINE 12"	FOOT	925
THERMOPLASTIC PAVEMENT MARKING - LINE 24"	FOOT	218
PAVEMENT MARKING REMOVAL	SQ FT	868
CONDUIT IN TRENCH, 2 1/2" DIA., GALVANIZED STEEL	FOOT	18
TRENCH AND BACKFILL FOR ELECTRICAL WORK	FOOT	18
MAINTENANCE OF EXISTING TRAFFIC SIGNAL INSTALLATION	EACH	1
FULL ACTUATED CONTROLLER IN EXISTING CABINET	EACH	1
ELECTRIC CABLE IN CONDUIT, SIGNAL NO. 14 2C	FOOT	1494
ELECTRIC CABLE IN CONDUIT, SIGNAL NO. 14 3C	FOOT	1871
ELECTRIC CABLE IN CONDUIT, SIGNAL NO. 14 7C	FOOT	55
ELECTRIC CABLE IN CONDUIT, LEAD-IN, NO. 14 1 PAIR	FOOT	1699
ELECTRIC CABLE IN CONDUIT, SERVICE, NO. 6 2 C	FOOT	87
TRAFFIC SIGNAL POST, GALVANIZED STEEL 16 FT.	EACH	1
CONCRETE FOUNDATION, TYPE A	FOOT	4
DRILL EXISTING HANDHOLE	EACH	1
SIGNAL HEAD, LED, 1-FACE, 3-SECTION, MAST-ARM MOUNTED	EACH	4
SIGNAL HEAD, LED, 1-FACE, 5-SECTION, BRACKET MOUNTED	EACH	4
SIGNAL HEAD, LED, 1-FACE, 5-SECTION, MAST-ARM MOUNTED	EACH	4
PEDESTRIAN SIGNAL HEAD, LED, 2-FACE, BRACKET MOUNTED WITH COUNTDOWN TIMER	EACH	4
TRAFFIC SIGNAL BACKPLATE, LOUVERED, ALUMINUM	EACH	8
INDUCTIVE LOOP DETECTOR	EACH	4
LIGHT DETECTOR	EACH	2
LIGHT DETECTOR AMPLIFIER	EACH	1
PEDESTRIAN PUSH-BUTTON	EACH	8
REMOVE ELECTRIC CABLE FROM CONDUIT	FOOT	2403
REMOVE EXISTING TRAFFIC SIGNAL EQUIPMENT	EACH	1
SERVICE INSTALLATION - POLE MOUNTED	EACH	1
UNINTERRUPTIBLE POWER SUPPLY	EACH	1
ELECTRIC CABLE IN CONDUIT, GROUNDING, NO. 6 1C	FOOT	734
ELECTRIC CABLE IN CONDUIT NO. 20 3/C, TWISTED, SHIELDED	FOOT	321
GROUND EXISTING HANDHOLE FRAME AND COVER	EACH	8

I.D.O.T TRAFFIC SIGNAL INSTALLATION ELECTRICAL SERVICE REQUIREMENTS

TYPE	NO. LAMPS	WATTAGE		% OPERATION	TOTAL WATTAGE
		INCAND.	LED		
SIGNAL (RED)	12		17	0.50	102
(YELLOW)	12		25	0.25	75
(GREEN)	12		15	0.25	45
ARROW	16		12	0.10	19.2
PED. SIGNAL	8		25	1.00	200
CONTROLLER	1		100	1.00	100
UPS	1		25	1.00	25
TOTAL =					566.2

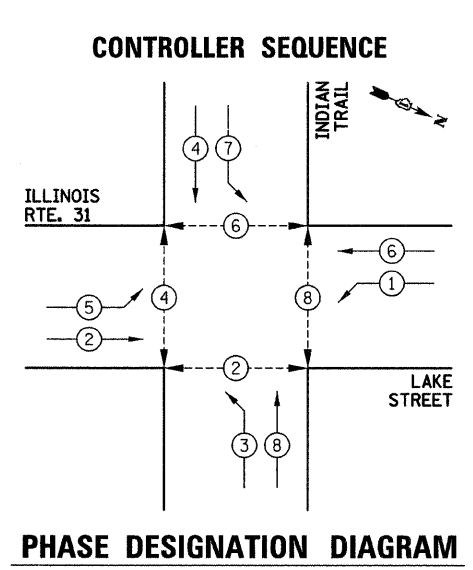
ENERGY COSTS TO: CITY OF AURORA
44 E. DOWNER PLACE
AURORA, ILLINOIS 60507-2067

ENERGY SUPPLY CONTACT: MARK SCHERIBEL
PHONE: (630) 723-2128
COMPANY: COMMONWEALTH EDISON



EMERGENCY VEHICLE PREEMPTION SEQUENCE

PROPOSED EMERGENCY VEHICLE PREEMPTORS	3	4
MOVEMENT	← →	↑ ↓



CONTROLLER SEQUENCE LEGEND

- ← ⊙ → DUAL ENTRY PHASE
- ← ⊙ SINGLE ENTRY PHASE
- ← ⊙ OL OVERLAP
- * NUMBER REFERRING TO ASSOCIATED PHASE
- ← ⊙ → PEDESTRIAN PHASE

THE TRAFFIC SIGNAL CONTROL EQUIPMENT FOR THIS PROJECT SHALL BE "ECONOLITE" TO MATCH THE EXISTING ADJACENT SYSTEM.

THE EMERGENCY VEHICLE PREEMPTION EQUIPMENT FOR THIS PROJECT SHALL BE OPTICOM AS REQUIRED BY THE CITY OF AURORA.