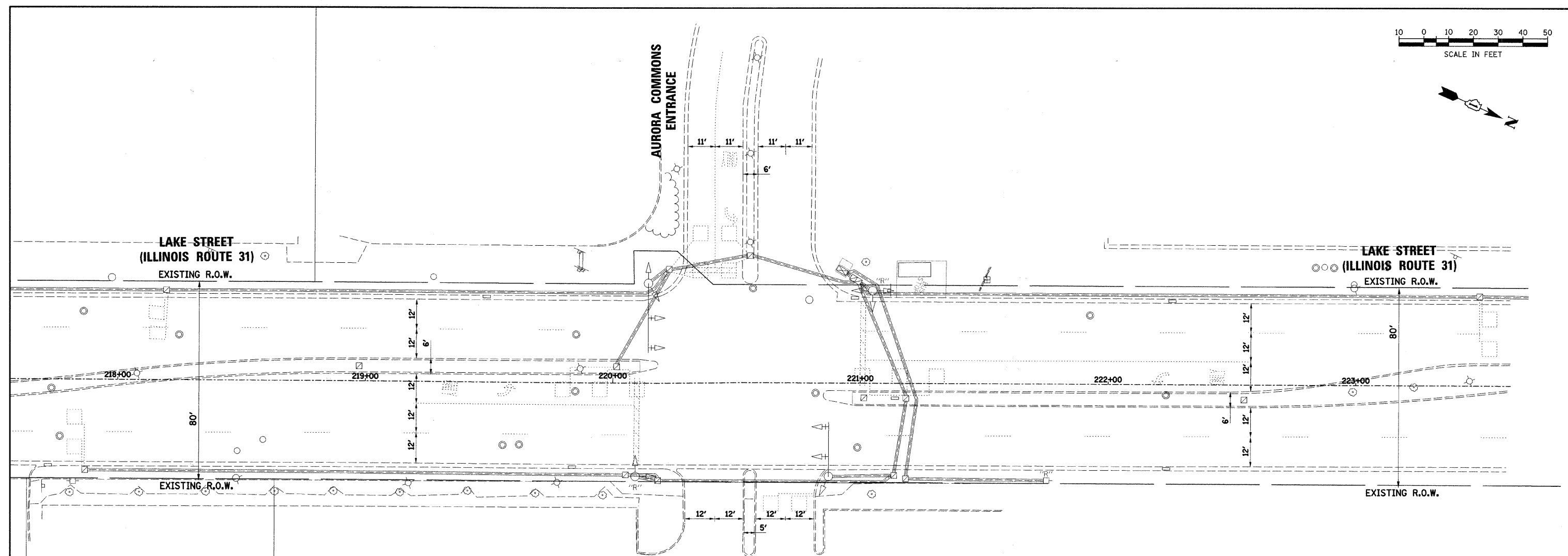


PLAN	SURVEYED	BY	DATE
	PLOTTED		
	ALIGNMENT CHECKED		
	NOTE BOOK		
	NO.		
	CADD FILE NAME		

PROFILE	SURVEYED	BY	DATE
	PLOTTED		
	GRADES CHECKED		
	NOTE BOOK		
	NO.		
	STRUCTURE NOTATIONS CHECKED		



COMMERCIAL ENTRANCE

- NOTES:**
- ALL EXISTING TRAFFIC SIGNALS, ELECTRIC CABLE AND RACEWAYS SHALL REMAIN IN PLACE UNTIL ALL THE PROPOSED TRAFFIC SIGNAL EQUIPMENT HAS BEEN INSTALLED. PRIOR TO DISCONNECTION OF THE EXISTING TRAFFIC SIGNAL EQUIPMENT, THE DISTRICT 1 AREA TRAFFIC SIGNAL ENGINEER SHALL BE NOTIFIED AT (847) 705-4424 A MINIMUM OF 72 HOURS IN ADVANCE OF THE TRAFFIC SIGNAL INSPECTION AND ACTIVATION.
 - THE CONTRACTOR SHALL BE RESPONSIBLE FOR MAINTAINING ALL EXISTING TRAFFIC SIGNAL OPERATIONS AT ALL TIMES DURING CONSTRUCTION.

THE EXISTING CONDUITS AND VEHICLE DETECTORS (WHERE APPLICABLE) SHALL BE ABANDONED.

THE FOLLOWING ITEMS SHALL BE REMOVED BY THE CONTRACTOR AND SHALL BE DISPOSED OF BY HIM OUTSIDE THE RIGHT-OF-WAY AT HIS EXPENSE. THE SALVAGE VALUE OF THE REMOVED EQUIPMENT SHALL BE REFLECTED IN THE CONTRACT BID PRICE. THIS WORK SHALL BE PAID FOR AT THE CONTRACT UNIT PRICE EACH FOR REMOVE EXISTING TRAFFIC SIGNAL EQUIPMENT (SEE SCHEDULE OF QUANTITIES FOR REMOVAL ITEMS TO BE PAID FOR SEPARATELY).

- 2 EACH TRAFFIC SIGNAL POSTS
- 12 EACH TRAFFIC SIGNAL HEADS
- 4 EACH TRAFFIC SIGNAL BACKPLATES
- 1 EACH SERVICE INSTALLATION

THE FOLLOWING EXISTING TRAFFIC SIGNAL EQUIPMENT SHALL BE REMOVED BY THE CONTRACTOR, SHALL BECOME THE PROPERTY OF THE CITY OF AURORA AND SHALL BE DELIVERED BY THE CONTRACTOR TO THE MAINTENANCE FACILITY DESIGNATED BY THE CITY. THIS WORK SHALL BE INCLUDED IN THE CONTRACT UNIT PRICE FOR REMOVE EXISTING TRAFFIC SIGNAL EQUIPMENT.

- 1 EACH TRAFFIC SIGNAL CONTROLLER

FILE NAME =
...V690_2.sig12a.cadm access *3.dgn

USER NAME = _USER_
DESIGNED -
DRAWN JMR
CHECKED JRS
PLOT SCALE = #SCALE#
PLOT DATE = 3/11/2010

REVISOR
REVISION
REVISION
REVISION
REVISION

**STATE OF ILLINOIS
DEPARTMENT OF TRANSPORTATION**

**EXISTING TRAFFIC SIGNAL EQUIPMENT TO BE REMOVED
AURORA COMMONS ENTRANCE**

F.A.U. RTE.	SECTION	COUNTY	TOTAL SHEETS	SHEET NO.
3902	05-00258-00-TL	KANE	61	47
FED. ROAD DIST. NO.			ILLINOIS FED. AID PROJECT	
SCALE:			SHEET NO. OF SHEETS STA. TO STA.	
			CONTRACT NO. 63251	