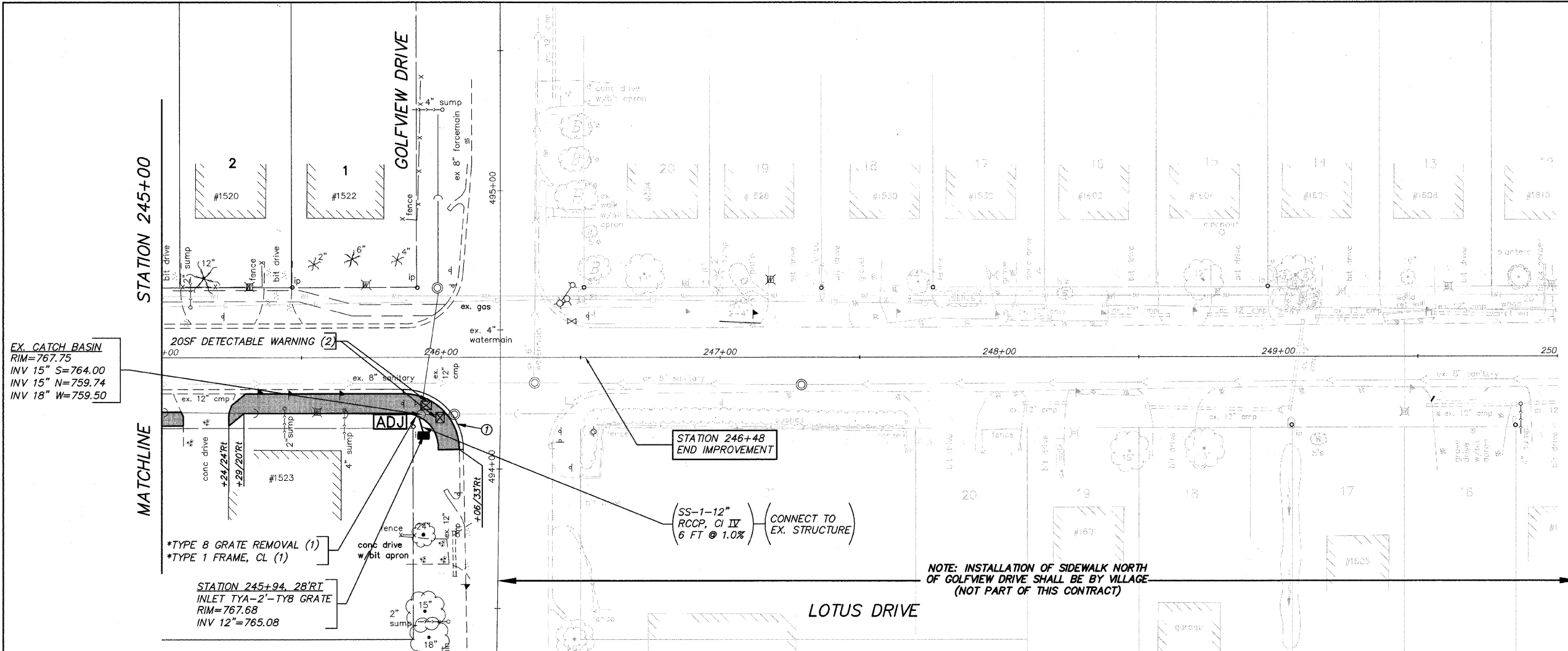


SCALE:  
HOR: 1"=20'  
VER: 1"=2'



EX. CATCH BASIN  
RIM=767.75  
INV 15" S=764.00  
INV 15" N=759.74  
INV 18" W=759.50

20SF DETECTABLE WARNING (2)

\*TYPE 8 GRATE REMOVAL (1)  
\*TYPE 1 FRAME, CL (1)

STATION 245+94, 28' RT  
INLET TYA-2'-TY8 GRATE  
RIM=767.68  
INV 12"=765.08

STATION 246+48  
END IMPROVEMENT

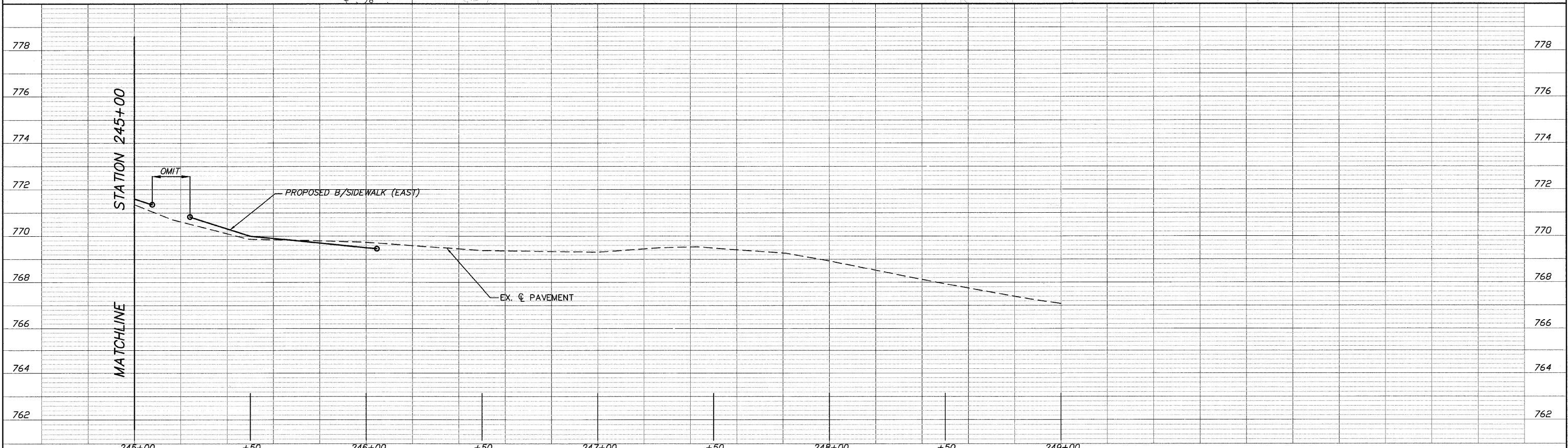
(SS-1-12"  
RCCP, CI IV)  
6 FT @ 1.0% (CONNECT TO  
EX. STRUCTURE)

NOTE: INSTALLATION OF SIDEWALK NORTH  
OF GOLFVIEW DRIVE SHALL BE BY VILLAGE  
(NOT PART OF THIS CONTRACT)

\*COMBINATION CONCRETE  
CURB & GUTTER, TYB-6.12  
\*CURB REMOVAL  
ITEM LENGTH(FT)  
① 33

NOTE:  
EXISTING PIPE CULVERT  
CONNECTIONS TO MANHOLES  
INCLUDED IN COST OF PIPE  
CULVERT (TYP.)

NOTE:  
LANDSCAPE/DECORTIVE PLANTINGS  
WITHIN CONSTRUCTION LIMITS IN R.O.W.  
ARE TO BE REMOVED/DISPOSED OF  
OFF-SITE, COST TO BE INCLUDED IN  
EARTH EXCAVATION.



FILE NAME = 10258806.DWG	USER NAME =	DESIGNED - RJD	REVISED -	<b>STATE OF ILLINOIS DEPARTMENT OF TRANSPORTATION</b>	<b>PLAN AND PROFILE</b>	F.A. RTE.	SECTION	COUNTY	TOTAL SHEETS	SHEET NO.	
	FILE NAME =	DRAWN - EC	REVISED -			---	08-00062-00-SW	LAKE	73	33	
	PLOT SCALE =	CHECKED - RJD	REVISED -			SCALE: 1"=20' SHEET NO. 33 OF 73 SHEETS STA. 245+00 TO STA. 246+48					
	PLOT DATE =	DATE - 10/02/09	REVISED -			CONTRACT NO. 63280 ILLINOIS FED. AID PROJECT					