

| | | | | |
|---------------------|----------------|----------|---------------------|-----------|
| F.A. RTE. | SECTION | COUNTY | TOTAL SHEETS | SHEET NO. |
| | 01-P4015-01-BT | WILL | 41 | 1 |
| CONTRACT NO.: 63325 | | ILLINOIS | FEDERAL AID PROJECT | |

FOR INDEX OF SHEETS, SEE SHEET NO. 2

FOR INDEX OF HIGHWAY STANDARDS, SEE SHEET NO. 2

PROJECT LOCATED IN THE VILLAGE OF PLAINFIELD

STATE OF ILLINOIS
DEPARTMENT OF TRANSPORTATION
DIVISION OF HIGHWAYS
**PLANS FOR PROPOSED
FEDERAL-AID HIGHWAY**
DuPAGE RIVER TRAIL IMPROVEMENTS
PROJECT No.: ^{ARA-}TE-HPP-3033(001)
SECTION No.: 01-P4015-00-BT
JOB No.: C-91-219-06
PLAINFIELD PARK DISTRICT
WILL COUNTY



STATE OF ILLINOIS
DEPARTMENT OF TRANSPORTATION

APPROVED Jan 13 2010
Carrie Bots
PLAINFIELD PARK DISTRICT, REPRESENTATIVE

PASSED JANUARY 15 2010
C. Felt
DISTRICT 1 ENGINEER OF LOCAL ROADS & STREETS

RELEASING FOR BID
BASED ON LIMITED
REVIEW JANUARY 19 2010
Diane M. O'Keefe
DEPUTY DIRECTOR OF HIGHWAYS, REGION 1 ENGINEER

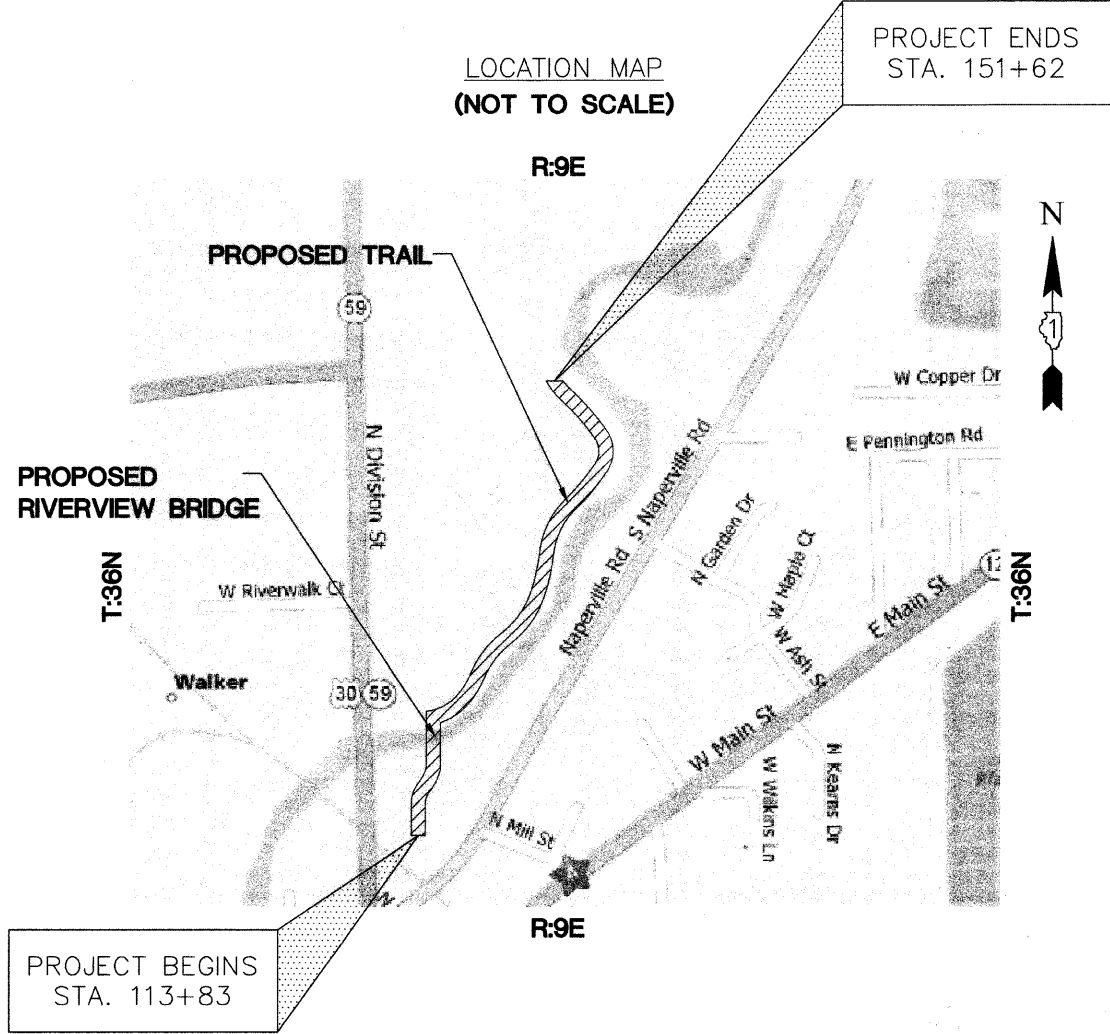
ENGINEERING RESOURCE ASSOCIATES, INC.
CONSULTING ENGINEERS, SCIENTISTS & SURVEYORS

38701 WEST AVENUE, SUITE 150
WARRENVILLE, ILLINOIS 60555
PHONE (630) 393-3060
FAX (630) 393-2152

John F. Mayer, P.E.
IL. P.E. NO. 062-047345
Expires November 30, 2011

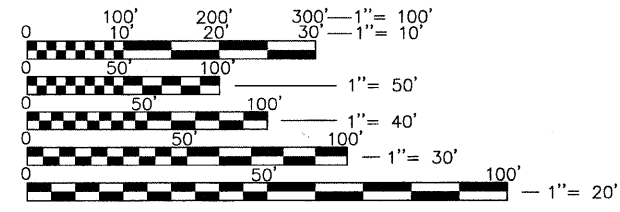
**PRINTED BY THE AUTHORITY
OF THE STATE OF ILLINOIS**

LOCATION MAP
(NOT TO SCALE)



PROJECT BEGINS
STA. 113+83

PLAINFIELD TOWNSHIP
GROSS LENGTH OF IMPROVEMENT = 4,079.00 LF (0.77 MILES)
NET LENGTH OF IMPROVEMENT = 4,079.00 LF (0.77 MILES)



FULL SIZE PLANS HAVE BEEN PREPARED USING STANDARD ENGINEERING SCALES. REDUCED SIZED PLANS WILL NOT CONFORM TO STANDARD SCALES. IN MAKING MEASUREMENTS ON REDUCED PLANS, THE ABOVE SCALES MAY BE USED.

J.U.L.I.E.
JOINT UTILITY LOCATION INFORMATION FOR EXCAVATION
1-800-892-0123
OR 811

CONTRACT NO. 63325

IDOT FIELD ENGINEER: MELCHOR MANGOBA (847) 705-4408

W:\Plainfield\027013 DuPage River Trail\04\Phase 1\Cover.dwg Updated by: dbusama 1/13/2010