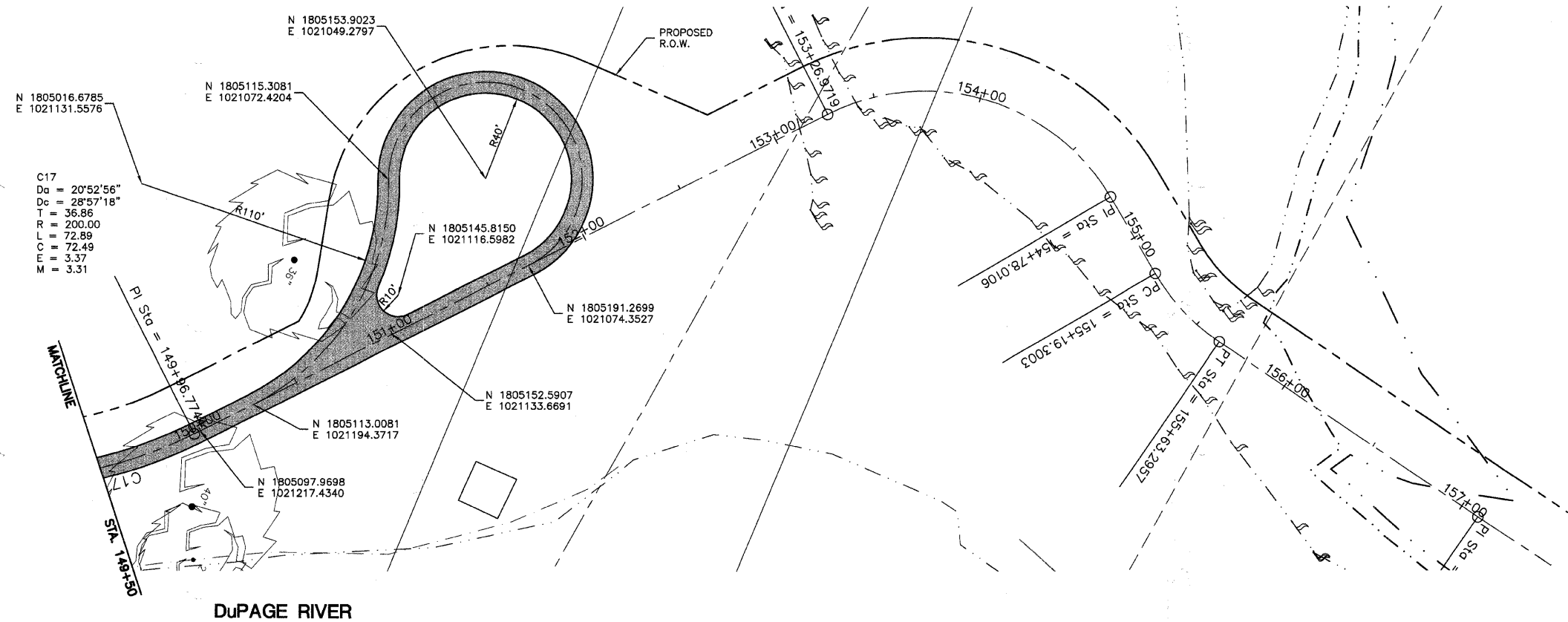


N.T.S.



WILL COUNTY BENCHMARKS

STATION NAME: 306
 NGS 3-D MARKER LOCATED ± 0.40 MILE EAST OF HEGGS ROAD ON THE SOUTH SIDE OF 135TH STREET CONSISTING OF 3/8" DIA. STAINLESS STEEL ROD INSIDE GREASE FILLED 1" DIA. PVC, DRIVEN TO A REFUSAL DEPTH OF 12 FEET ENCLOSED IN SAND AND 6" PVC PIPE WITH ALUMINUM ACCESS COVER.
 HORIZONTAL DATUM: NAD 83 ILLINOIS STATE PLANE EAST ZONE
 VERTICAL DATUM: NAVD 88 FROM ELLIPSOIDAL HEIGHTS
 NORTHING: 1810010.773
 EASTING: 1004539.356
 ELEV: 672.594



USER NAME =	DESIGNED -- BD	REVISED --
	DRAWN -- DB	REVISED --
PLOT SCALE =	CHECKED -- JFM	REVISED --
PLOT DATE =	DATE -- JANUARY, 2010	REVISED --

STATE OF ILLINOIS
 DEPARTMENT OF TRANSPORTATION

ALIGNMENT, TIES AND BENCHMARKS
 SCALE: N.T.S. SHEET NO. 3 OF 3 SHEETS

F.A. RTE.	SECTION	COUNTY	TOTAL SHEETS	SHEET NO.
	01-P4015-01-BT	WILL	41	7
CONTRACT NO. 63325				
FED. ROAD DIST. NO. 1 ILLINOIS FED. AID PROJECT				

W:\P\11111111\201113 DuPage River Trail\135th Street\Phase 1\Alignment_Ties.dwg Updated by: abussamr 1/14/2010