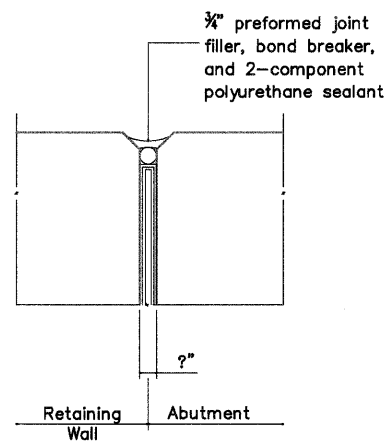
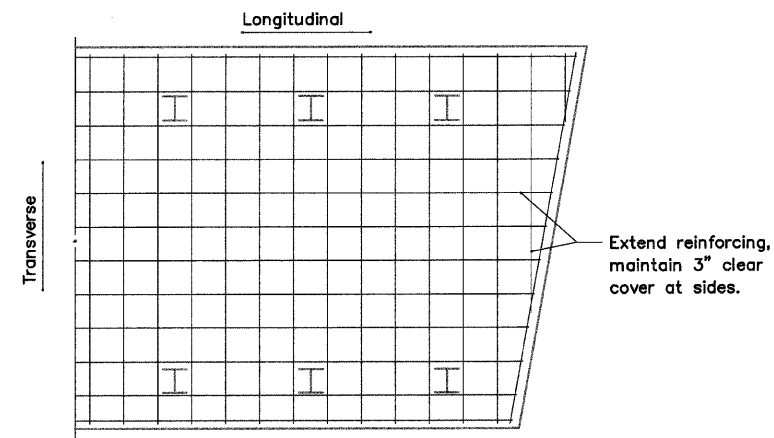


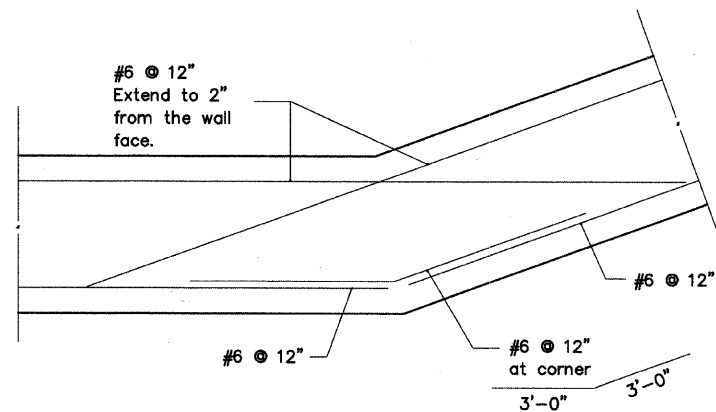
WALL CORNER DETAIL  
ANGLES LESS  
THAN 120 DEGREES



JOINT DETAIL



PILE CAP REINFORCING  
DETAIL



WALL CORNER DETAIL  
ANGLES GREATER  
THAN 120 DEGREES

PILE DATA

NUMBER REQ'D :	11 NORTH ABUTMENT 14 SOUTH ABUTMENT
NOM. REQ'D BEARING :	335 KIPS/PILE
ALLOWABLE AVAILABLE RESISTANCE :	110 KIPS/PILE
EST. LENGTH :	50 FT., NORTH ABUTMENT AND 50 FT., SOUTH ABUTMENT ALL PILES DRIVEN TO REFUSAL
TEST PILES :	1 NORTH ABUTMENT 1 SOUTH ABUTMENT

BILL OF MATERIAL  
2 ABUTMENTS

ITEM	UNIT	N. Abut. QTY	S. Abut. QTY	Total QTY
Concrete Structures	Cu. Yd.	82.2	95.6	177.8
Reinforcement Bars	Pounds	12,700	14,400	27,100
Test Pile, Steel HP10x42	Each	1	1	2
Furnishing Steel Piles, HP10x42	Feet	700	550	1250
Driving Piles	Feet	700	550	1250
Pile Shoes	Each	30	15	27
Structure Excavation	Cu. Yd.	23	30	30
Sub-base Granular Material, Type C, CA-11	Cu. Yd.		28	51

**FRAUENHOFER**

Frauenhoffer and Associates, P.C. Consulting Engineers  
3002 Crossing Court Champaign, IL 61822 217-351-6268

ABUTMENT DETAILS

SHEET X  
DWG NO. abut.DWG  
DATE NOV 2009  
PROJ NO. 8137



USER NAME =	DESIGNED -- KJH	REVISED --
PLOT SCALE =	DRAWN -- KJH	REVISED --
PLOT DATE =	CHECKED -- JF	REVISED --
	DATE -- JANUARY, 2010	REVISED --

STATE OF ILLINOIS  
DEPARTMENT OF TRANSPORTATION

DUPAGE RIVER BRIDGE  
ABUTMENT DETAILS

SCALE: 3/4"=1'-0" SHEET NO. 1 OF 1 SHEETS

F.A. RTE.	SECTION	COUNTY	TOTAL SHEETS	SHEET NO.
	01-P4015-01-BT	WILL	41	27
FED. ROAD DIST. NO. 1   ILLINOIS FED. AID PROJECT			CONTRACT NO. 63325	