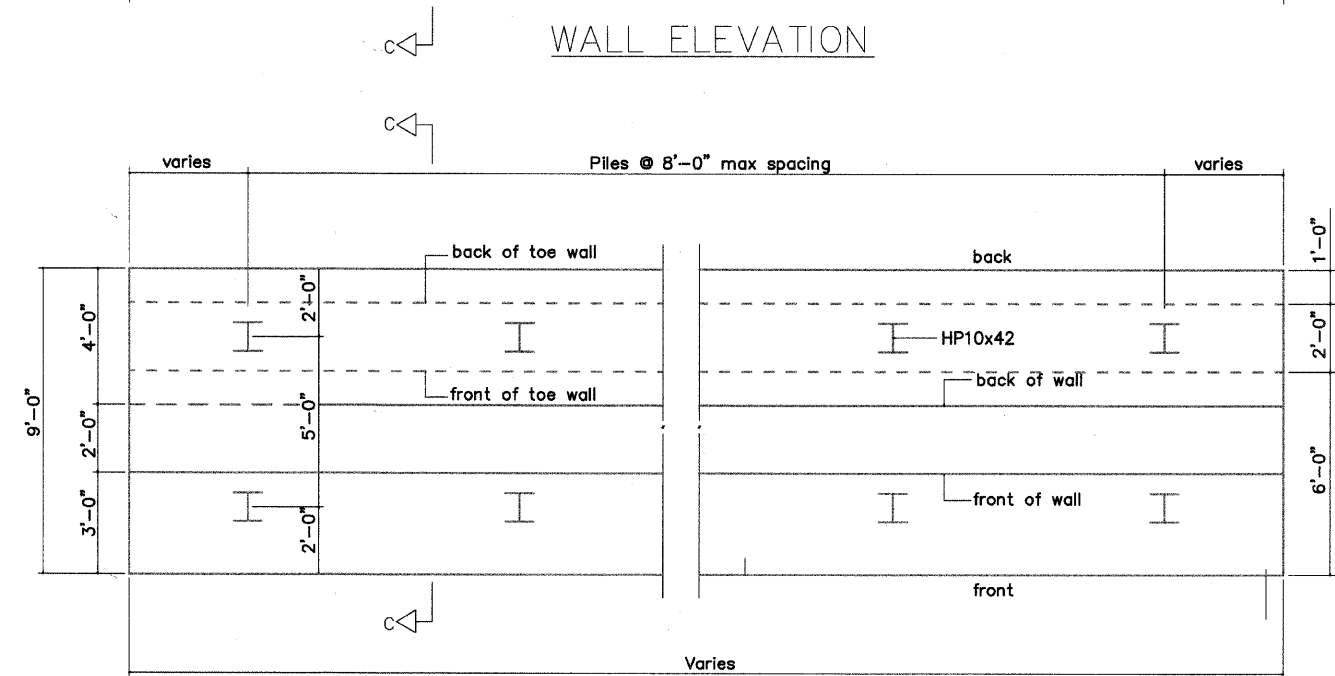
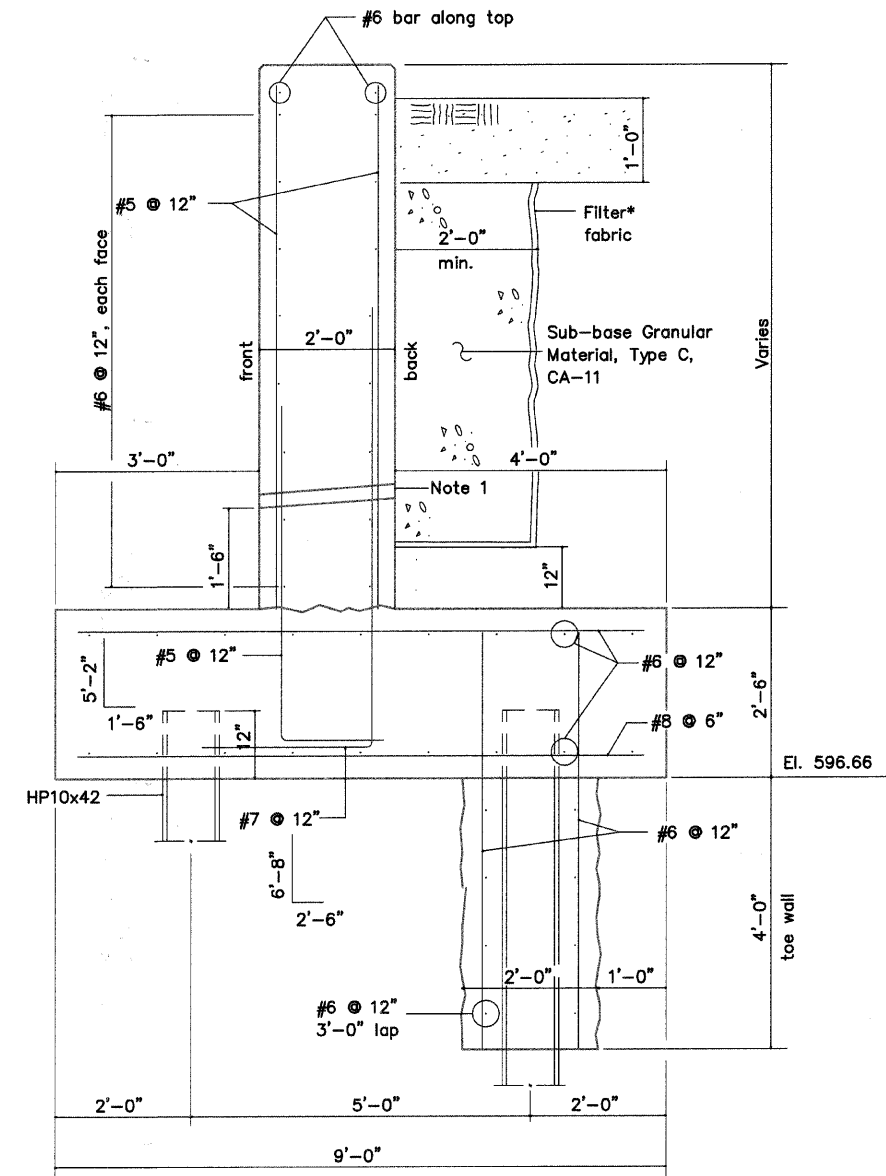


WALL ELEVATION



WALL FOUNDATION PLAN

* Filter fabric cost shall be incidental to Sub-base Granular Material, Type C



SECTION C-C

Note 1: Place 2" dia. PVC weep holes @ 10' max c/c. Cost shall be included in Concrete Structures. The height of the holes shall be the higher of 1'-6" above the top of the cap or 6" above the finish grade at the front of the wall.

Clear covers 3" bottom shall be: 3" sides of footing, 2" sides of walls, 2" top

All edges shall receive a 3/8" chamfer.

FRAUENHOFER

Frauenhoffer and Associates, P.C. Consulting Engineers
3002 Crossing Court Champaign, IL 61822 217-351-6268

RETAINING WALL DETAILS

SHEET	X
DWG NO.	abut.DWG
DATE	NOV 2009
PROJ NO.	8137



USER NAME	DESIGNED -- KJH	REVISED --
PLOT SCALE	DRAWN -- KJH	REVISED --
PLOT DATE	CHECKED -- JF	REVISED --
	DATE -- JANUARY, 2010	REVISED --

STATE OF ILLINOIS
DEPARTMENT OF TRANSPORTATION

DUPAGE RIVER BRIDGE
RETAINING WALL DETAILS

SCALE: 3/8"=1'-0" SHEET NO. 1 OF 3 SHEETS

F.A. RTE.	SECTION	COUNTY	TOTAL SHEETS	SHEET NO.
	01-P4015-01-BT	WILL	41	28
CONTRACT NO. 63325				
FED. ROAD DIST. NO. 1 ILLINOIS FED. AID PROJECT				