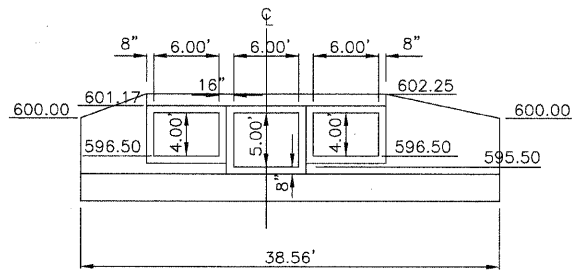
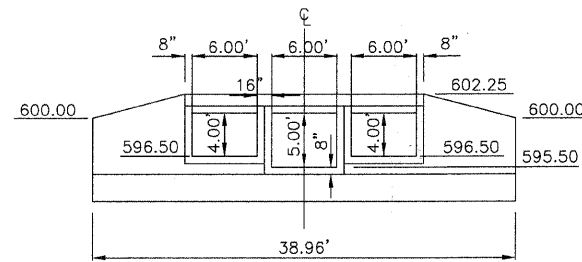


PLAN VIEW



SECTION A



SECTION B

WEST NORMAN
BOX CULVERT
NOT TO SCALE

<p>ENGINEERING RESOURCE ASSOCIATES, INC. CONSULTING ENGINEERS, SCIENTISTS & SURVEYORS</p>	USER NAME =	DESIGNED -- BD	REVISED --	STATE OF ILLINOIS DEPARTMENT OF TRANSPORTATION	WEST NORMAN BOX CULVERT		F.A. RTE.	SECTION	COUNTY	TOTAL SHEETS	SHEET NO.
	PLOT SCALE =	DRAWN -- DB	REVISED --				01-P4015-01-BT	WILL	41	31	
	PLOT DATE =	CHECKED -- JFM	REVISED --		SCALE: N.T.S. SHEET NO. 1 OF 1 SHEETS		CONTRACT NO. 63325				
		DATE -- JANUARY, 2010	REVISED --		FED. ROAD DIST. NO. 1 ILLINOIS FED. AID PROJECT						