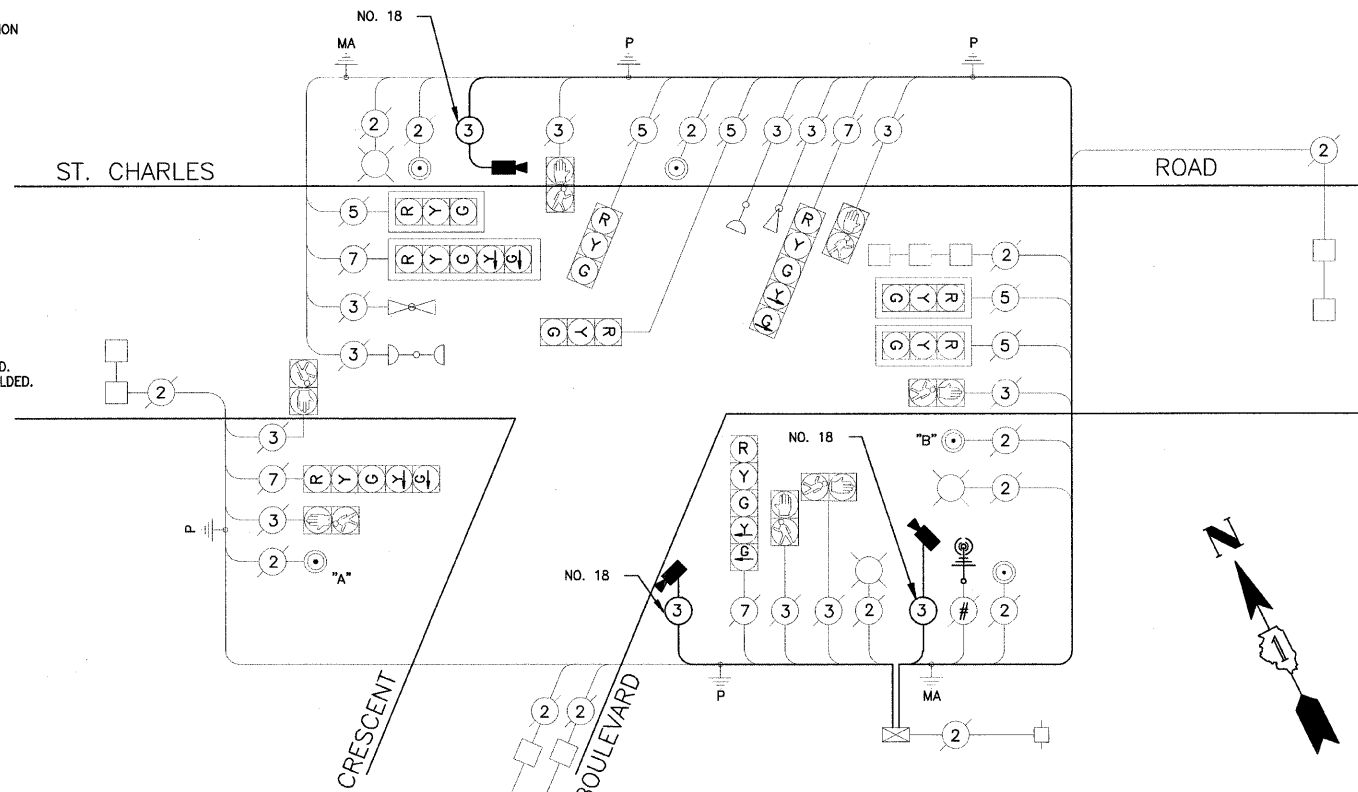


CABLE PLAN LEGEND

- | | | |
|-----------------|-----------------|-------------------------------------------------------------------------------------------------------------|
| EXISTING | PROPOSED | |
| | | 8" (200mm) TRAFFIC SIGNAL SECTION |
| | | 12" (300mm) TRAFFIC SIGNAL SECTION |
| | | 12" (300mm) PEDESTRIAN SIGNAL SECTION |
| | | 12" (300mm) PEDESTRIAN SIGNAL SECTION WITH COUNTDOWN TIMER |
| | | CONTROLLER CABINET |
| | | SERVICE INSTALLATION |
| | | TELEPHONE INSTALLATION |
| | | VEHICLE DETECTOR, INDUCTION LOOP |
| | | MAGNETIC DETECTOR |
| | | EMERGENCY VEHICLE LIGHT DETECTOR |
| | | CONFIRMATION BEACON |
| | | PUSHBUTTON DETECTOR |
| | | DENOTES NUMBER OF CONDUCTORS. ALL CABLE NO. 14 EXCEPT AS INDICATED. ALL LOOP DETECTOR CABLE TO BE SHIELDED. |
| | | GROUND CABLE IN CONDUIT NO. 6 SOLID COPPER (GREEN) |
| | | FIBER OPTIC CABLE IN CONDUIT NO. 62.5/125 2-MM12F SM12F |
| | | SIGNAL FACE WITH BACKPLATE. "P" INDICATES PROGRAMMED HEAD. |
| | | IMAGE SENSOR |
| | | LUMINAIRE |
| | | RAILROAD CONTROL CABINET |
| | | ILLUMINATED SIGN "NO LEFT TURN" |
| | | ILLUMINATED SIGN "NO RIGHT TURN" |
| | | GROUND ROD AT HANDHOLE (H), DOUBLE HANDHOLE (H), OR CONTROLLER (C) |
| | | GROUND ROD AT POST (P) OR MAST ARM POLE (MA) |
| | | GROUND ROD AT ELECTRIC SERVICE INSTALLATION |
| | | RADIO INTERCONNECT ANTENNA |
| | | COAXIAL CABLE |



CABLE DIAGRAM

NOTE: PUSH BUTTON "A" PLACES A CALL TO PHASES 4 AND 6
PUSH BUTTON "B" PLACES A CALL TO PHASES 8 AND 6

SCHEDULE OF QUANTITIES

DESCRIPTION	UNIT	QUANTITY
MAINTENANCE OF EXISTING TRAFFIC SIGNAL INSTALLATION	EACH	1
MODIFY EXISTING CONTROLLER	EACH	1
REMOVE ELECTRIC CABLE FROM CONDUIT	FOOT	472
VIDEO DETECTION SYSTEM, COMPLETE INTERSECTION	EACH	1
ELECTRIC CABLE IN CONDUIT NO. 18 3C	FOOT	388
VIDEO TRANSMISSION SYSTEM	EACH	1

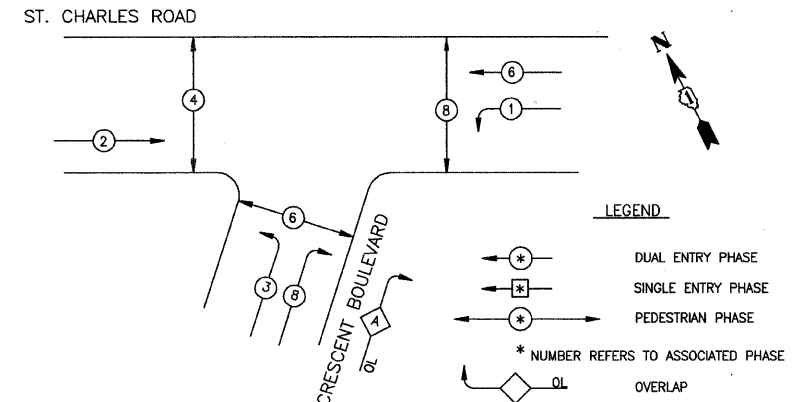
I.D.O.T. TRAFFIC SIGNAL INSTALLATION ELECTRICAL SERVICE REQUIREMENTS				
TYPE	NO LAMPS	LED WATTAGE	%OPERATION	TOTAL WATTAGE
SIGNAL (RED)	9	17	0.50	76.5
(YELLOW)	9	25	0.25	56.25
(GREEN)	9	15	0.25	33.75
ARROW	8	12	0.10	9.6
PED. SIGNAL	6	25	1.00	150
CONTROLLER	1	100	1.00	100
ILLUM. SIGN	-	40	0.50	-
STREET LIGHTS	3	250	0.50	375
DET. CAMERA	3	25	1.0	75
TOTAL =				801.1

ENERGY COSTS BILLED TO:
(ADDRESS) VILLAGE OF LOMBARD
255 E. WILSON AVE.
LOMBARD, IL 60148-3931

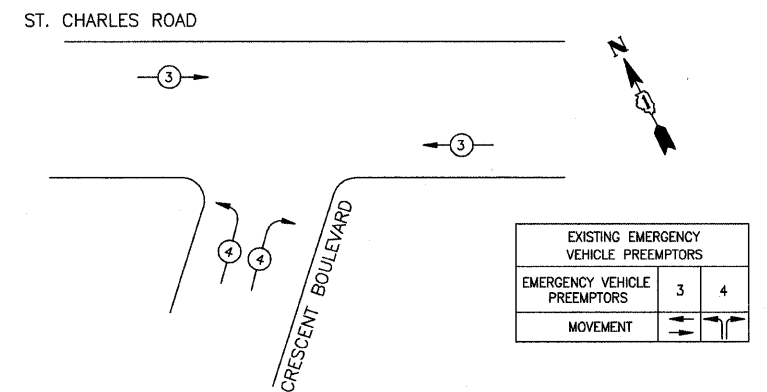
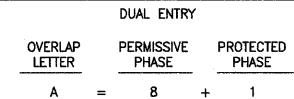
ENERGY SUPPLY CONTACT:
PHONE:
COMPANY: COMMONWEALTH EDISON

FOUNDATION (DEPTH)	(FT.)	CABLE SLACK	(FT.)	VERTICAL	(FT.)
TYPE A - POST	4	HANDHOLE	6.5	ALL FOUNDATIONS	3.5
D - CONTROLLER	4	DOUBLE HANDHOLE	13	MAST ARM (L) POLE	20'+L-2=
E - M. ARM POLE	-	SIGNAL POST	2	BRACKET MOUNTED	13
24"	10"	CONTROLLER CAB.	6	PED. PUSHBUTTON	4
30"	15	FIBER OPTIC	13	ELECTRIC SERVICE	13.5
		ELECTRIC SERVICE	1	SERVICE TO GROUND	13.5
		GROUND CABLE	1	POST MOUNTED	6

CONTROLLER SEQUENCE



PHASE DESIGNATION DIAGRAM



EMERGENCY VEHICLE PREEMPTION SEQUENCE

EXISTING EMERGENCY VEHICLE PREEMPTORS		
EMERGENCY VEHICLE PREEMPTORS	3	4
MOVEMENT	→	←

I:\L\OMB\090317-ST CHARLES CADD-SURVEY\DRAWINGS\DWGS\090317-SIG-CABLE.dwg - ST.CHARLES-CRSONT
 Project 2-08-10 By: [unclear] 4/24/10
 Checked: [unclear] 4/24/10
 State of Illinois - Professional Design Firm
 License No. - 184-001121 - Expires 4-30-09



DESIGNED - TMS	REVISED - PER VILLAGE REVIEW 09-16-09
DRAWN - KAR	REVISED - PER IDOT REVIEW 09-17-0
CHECKED - JJF	REVISED -
DATE - 06-26-09	REVISED -

**STATE OF ILLINOIS
DEPARTMENT OF TRANSPORTATION**

**TRAFFIC SIGNAL MODIFICATION CABLE PLAN
ST. CHARLES ROAD**

F.A.P. RTE. 1397	SECTION 09-00153-00-RS	COUNTY DuPAGE	TOTAL SHEETS 36	SHEET NO. 21
CONTRACT NO. 63351			FED. ROAD DIST. NO. 1 ILLINOIS FED. AID PROJECT M-ARA-9003(421)	

SCALE: NONE PROJECT NO: 090317 STA. TO STA.