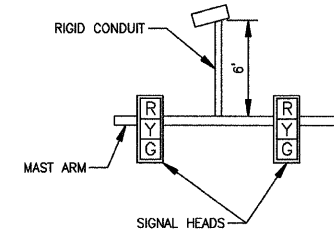
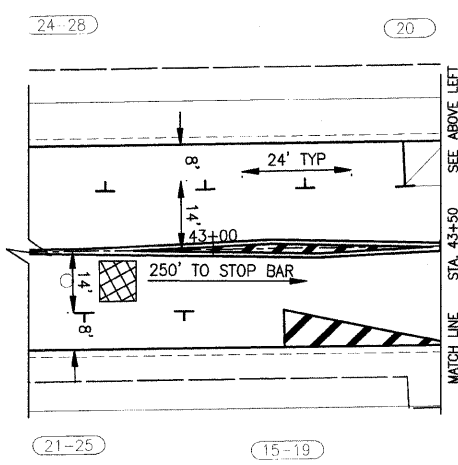
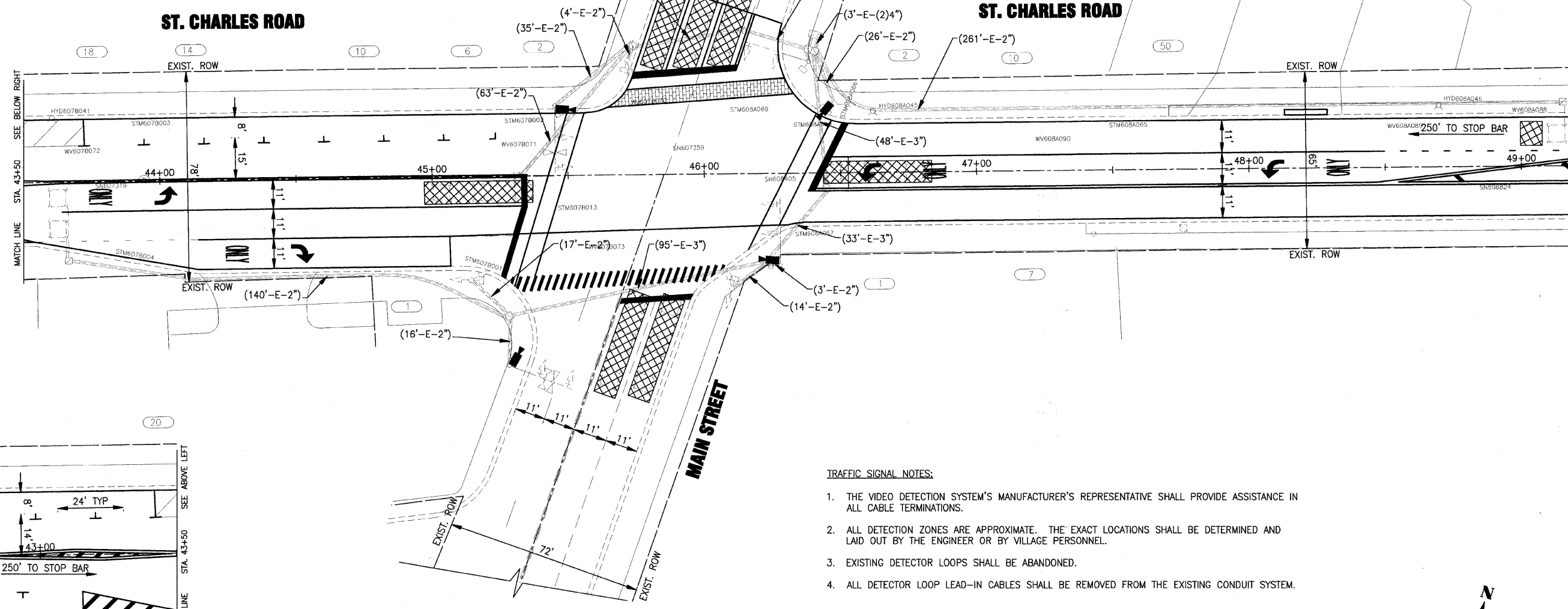


**TRAFFIC SIGNAL LEGEND**

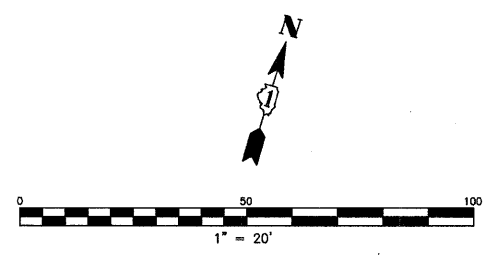
	PROPOSED	EXISTING		PROPOSED	EXISTING
CONTROLLER			EMERGENCY VEHICLE SYSTEM DETECTOR		
SERVICE INSTALLATION			CONFIRMATION BEACON		
SIGNAL HEAD			LUMINAIRE		
SIGNAL HEAD WITH BACKPLATE			VIDEO DETECTION ZONE		
SIGNAL HEAD, PEDESTRIAN			VIDEO VEHICLE SENSOR		
SIGNAL POST					
MAST ARM ASSEMBLY AND POLE, STEEL					
HANDHOLE					
HEAVY DUTY HANDHOLE					
DOUBLE HANDHOLE					
PVC CONDUIT IN TRENCH OR PUSHED					
PEDESTRIAN PUSHBUTTON DETECTOR					
DETECTOR LOOP					



**VIDEO DETECTION MOUNTING DETAIL.**



- TRAFFIC SIGNAL NOTES:**
1. THE VIDEO DETECTION SYSTEM'S MANUFACTURER'S REPRESENTATIVE SHALL PROVIDE ASSISTANCE IN ALL CABLE TERMINATIONS.
  2. ALL DETECTION ZONES ARE APPROXIMATE. THE EXACT LOCATIONS SHALL BE DETERMINED AND LAID OUT BY THE ENGINEER OR BY VILLAGE PERSONNEL.
  3. EXISTING DETECTOR LOOPS SHALL BE ABANDONED.
  4. ALL DETECTOR LOOP LEAD-IN CABLES SHALL BE REMOVED FROM THE EXISTING CONDUIT SYSTEM.



I:\LMBD\090317-ST. CHAR. LAPP\CADD-SURVEY\DRAWINGS\DWG\090317-SIG-PLAN.dwg - ST. CHARLES-MAIN  
 Plotted: 2-08-10 @ 8:46am By: 560kwr  
 Copyright © 2009, By Baxter & Woodman, Inc.  
 State of Illinois - Professional Design Firm  
 License No. - 184-001121 - Expires 4-30-11

	DESIGNED - TMS	REVISED - PER VILLAGE REVIEW 09-09-09
	DRAWN - KAR	REVISED - PER VILLAGE REVIEW 09-16-07
	CHECKED - JWF	REVISED - PER IDOT REVIEW 09-17-09
	DATE - 06-26-09	REVISED -

**STATE OF ILLINOIS  
DEPARTMENT OF TRANSPORTATION**

<b>TRAFFIC SIGNAL MODIFICATION PLAN</b>	
<b>ST. CHARLES ROAD</b>	
SCALE: HORIZ. 1"=20'	PROJECT NO: 090317 STA. TO STA.

F.A.P. RTE. 1397	SECTION 09-00153-00-RS	COUNTY DuPAGE	TOTAL SHEETS 36	SHEET NO. 26
CONTRACT NO. 63351			FED. ROAD DIST. NO. 1 ILLINOIS FED. AID PROJECT M-ARA-9003(421)	