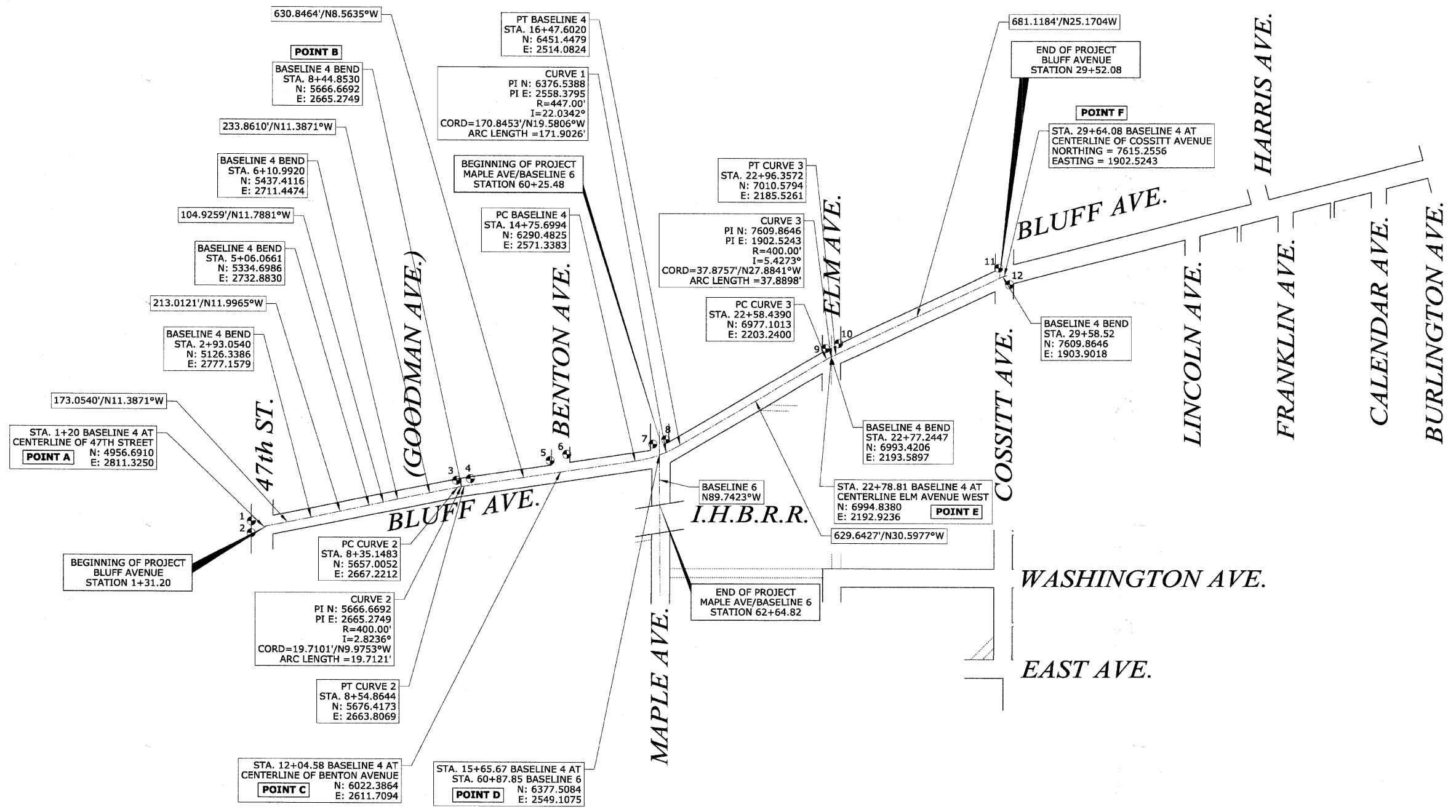


CONTRACT No. 63353

DATE: _____ BY: _____
 PLAN NO.: _____
 CHECKED: _____
 DATE: _____

DATE: _____ BY: _____
 PROFILE NO.: _____
 CHECKED: _____
 DATE: _____



- DENOTES LOCATION AND NUMBER OF CONTROL POINT

LEGEND
 SURVEY MARKER

CONTROL POINTS

LABEL	NORTHING	EASTING	ELEVATION	LOCATION
1	4,912.3250	2,791.1710	633.60	Set IP, Located ~44.4' South and ~20.2' West of POINT A
2	4,911.4300	2,834.0300	632.52	Set IP, Located ~45.3' South and ~22.7' East of POINT A
3	5,648.7060	2,642.8630	630.69	Set IP, Located ~18.0' South and ~22.4' West of POINT B
4	5,698.3190	2,636.7710	630.85	Set IP, Located ~31.6' North and ~28.5' West of POINT B
5	5,984.6880	2,570.2080	634.14	Set IP, Located ~37.7' South and ~41.5' West of POINT C
6	6,044.5520	2,547.7900	635.31	Set IP, Located ~22.2' North and ~63.9' West of POINT C
7	6,353.7710	2,510.2540	632.46	Set IP, Located ~23.7' South and ~38.9' West of POINT D
8	6,399.7290	2,493.5990	631.92	Set IP, Located ~22.2' North and ~55.5' West of POINT D
9	6,973.3850	2,163.4410	632.60	Set IP, Located ~21.5' South and ~29.3' West of POINT E
10	7,020.3450	2,145.5900	633.09	Set IP, Located ~25.5' North and ~47.2' West of POINT E
11	7,595.3440	1,873.8940	632.23	Set IP, Located ~20.4' South and ~29.4' West of POINT F
12	7,634.9600	1,932.4050	629.62	Set IP, Located ~19.2' North and ~29.2' East of POINT F

REVISIONS	
NAME	DATE

ILLINOIS DEPARTMENT OF TRANSPORTATION
**BLUFF AVENUE IMPROVEMENTS
 STAGE 3**
**ALIGNMENT, TIES AND
 ELEVATION CONTROL**
 SCALE: NTS
 DATE 11/30/2009
 DRAWN BY H&A
 CHECKED BY JRH