

**GENERAL NOTES:**

1. TRENCH BACKFILL REQUIRED UNDER ALL AND WITHIN 2" OF PAVED SURFACES.
2. EXISTING SEWER LATERALS DISTURBED DURING WATER MAIN INSTALLATION TO BE RESTORED. THE COST IS TO BE INCLUDED IN THE COST OF THE WATER MAIN.
3. CONTRACTOR TO VERIFY LOCATION OF UNDERGROUND UTILITIES PRIOR TO INSTALLATION OF PROPOSED IMPROVEMENTS.
4. CONTRACTOR SHALL DELIVER ALL SALVAGEABLE APPURTENANCES TO THE DEPARTMENT OF PUBLIC WORKS GARAGE.

ALL WATER SERVICES TO BE TRANSFERRED AFTER TESTING AND DISINFECTION (TYPICAL) (NEW B-BOXES)

LOWER WM B/STM=626.65 T/WM=625.15 2-45° BENDS

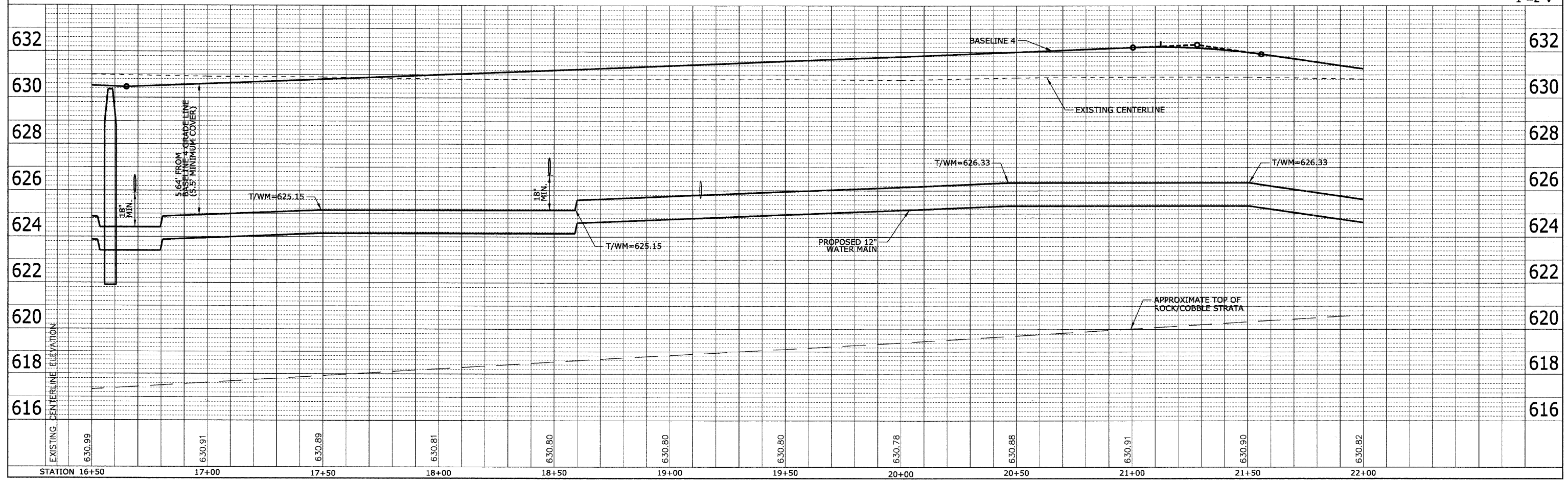
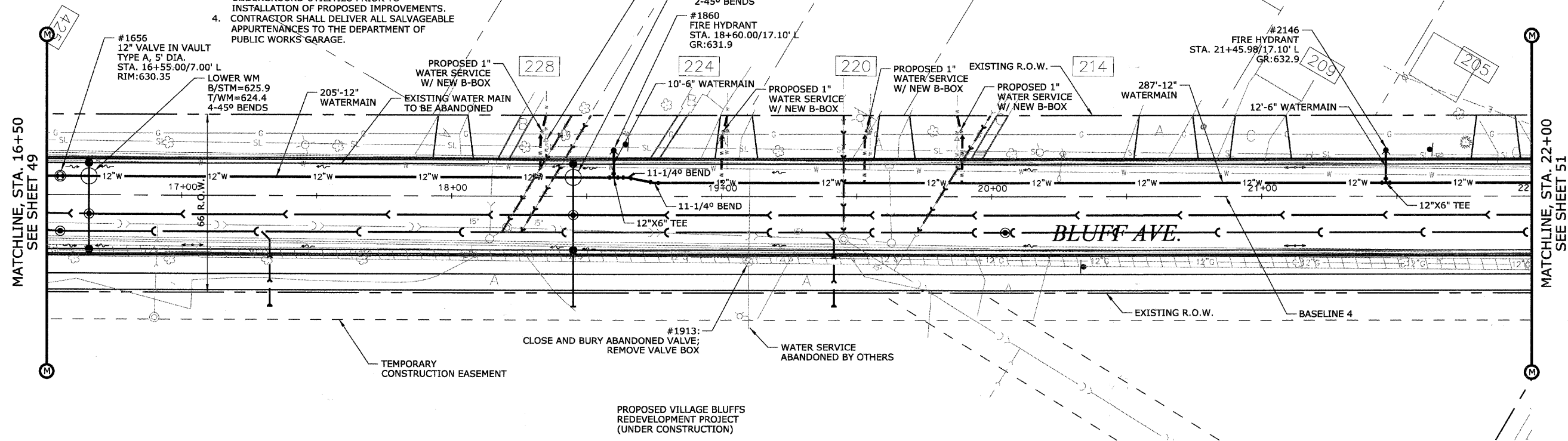
#1860 FIRE HYDRANT STA. 18+60.00/17.10' L GR:631.9

#2146 FIRE HYDRANT STA. 21+45.98/17.10' L GR:632.9

<b>HEUER AND ASSOCIATES</b>		F.A.U. No.	SECTION	COUNTY	TOTAL SHEETS	SHEET No.
Consulting Engineers		1004	08-00079-03-FP	COOK	94	50
2315 Enterprise Drive - Suite 102 Westchester, IL 60154-5811 708-492-1000		STA. 16+50	TO STA. 22+00			
BLUFF AVE. IMPROVEMENTS - STAGE 3		DATE: 11/30/09		ILLINOIS		FED. AID PROJECT
				WATER MAIN IMPROVEMENTS		CONTRACT No. 63353

PLAN	DATE	BY
REVISIONS	DATE	BY
NO. 1		
NO. 2		
NO. 3		
NO. 4		
NO. 5		
NO. 6		
NO. 7		
NO. 8		
NO. 9		
NO. 10		

PROFILE	DATE	BY
REVISIONS	DATE	BY
NO. 1		
NO. 2		
NO. 3		
NO. 4		
NO. 5		
NO. 6		
NO. 7		
NO. 8		
NO. 9		
NO. 10		



SCALE:  
1"=20' H  
1"=2' V