

F.A.U. RTE.	SECTION	COUNTY	TOTAL SHEETS	SHEET NO.
2743	05-00161-00-CH	COOK	112	1
FED. ROAD DIST. NO. 1		ILLINOIS	CONTRACT NO. 63383	

INDEX OF SHEETS

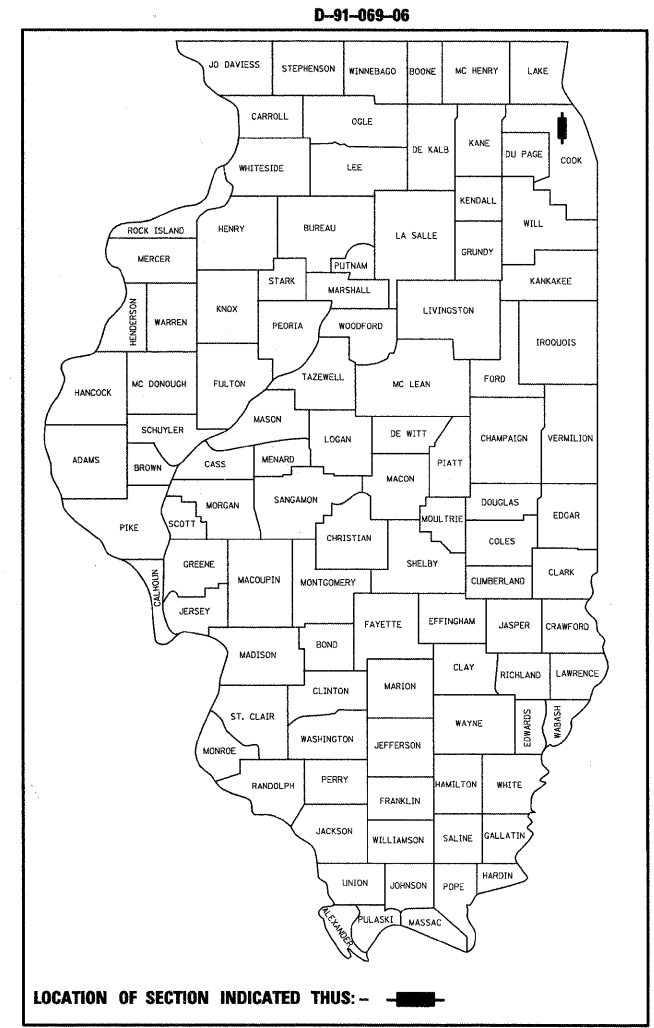
SHEET NO.	DESCRIPTION
1	COVER SHEET
2-3	GENERAL NOTES AND STATE STANDARDS
4-11	SUMMARY OF QUANTITIES
12-15	TYPICAL SECTIONS
16	SCHEDULE OF QUANTITIES
17	ALIGNMENT AND BENCHMARKS
18-27	PLAN AND PROFILE
28	MAINTENANCE OF TRAFFIC GENERAL NOTES
29-30	MAINTENANCE OF TRAFFIC TYPICAL SECTIONS
31-35	MAINTENANCE OF TRAFFIC
36-37	EROSION CONTROL AND LANDSCAPING PLAN
38-48	DRAINAGE AND UTILITIES
49-51	PLAT OF HIGHWAYS
52	INTERSECTION GRADING DETAILS
53-54	PAVEMENT MARKING PLAN
55-56	SIGNING PLAN
57-60	TEMPORARY TRAFFIC SIGNAL
61-62	PERMANENT TRAFFIC SIGNAL
63	MAST ARM MOUNTED STREET NAME SIGNS
64-69	TRAFFIC SIGNAL DETAILS
70-90	CONSTRUCTION DETAILS
91-112	CROSS SECTIONS

SEE SHEET NO. 3 FOR LIST OF HIGHWAY STANDARDS

VILLAGE OF GLENVIEW PROJECT NO. E03-035

STATE OF ILLINOIS
DEPARTMENT OF TRANSPORTATION
DIVISION OF HIGHWAYS
PLANS FOR PROPOSED
FEDERAL AID HIGHWAY

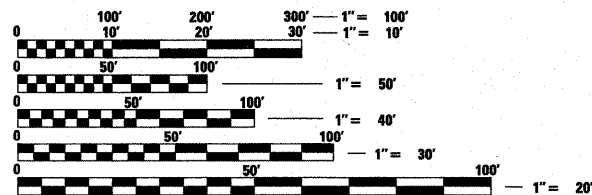
FAU ROUTE 2743 (GREENWOOD ROAD)
AT FAU ROUTE 1297 (GLENVIEW ROAD)
SECTION 05-00161-00-CH
PRO.CMM-M-8003(543)
INTERSECTION IMPROVEMENT
AND TRAFFIC SIGNAL MODERNIZATION
VILLAGE OF GLENVIEW
COOK COUNTY
C-91-069-06



ASSOCIATE FIELD ENGINEER: KEVIN STALLWORTH 847-705-4169 SCHAUMBURG, IL
CONSULTANT ENGINEER: DAVID KREGER, P.E. CIVILTECH ENGINEERING, INC.

DESIGN SPEEDS: 40 MPH **POSTED SPEEDS:** 35 MPH

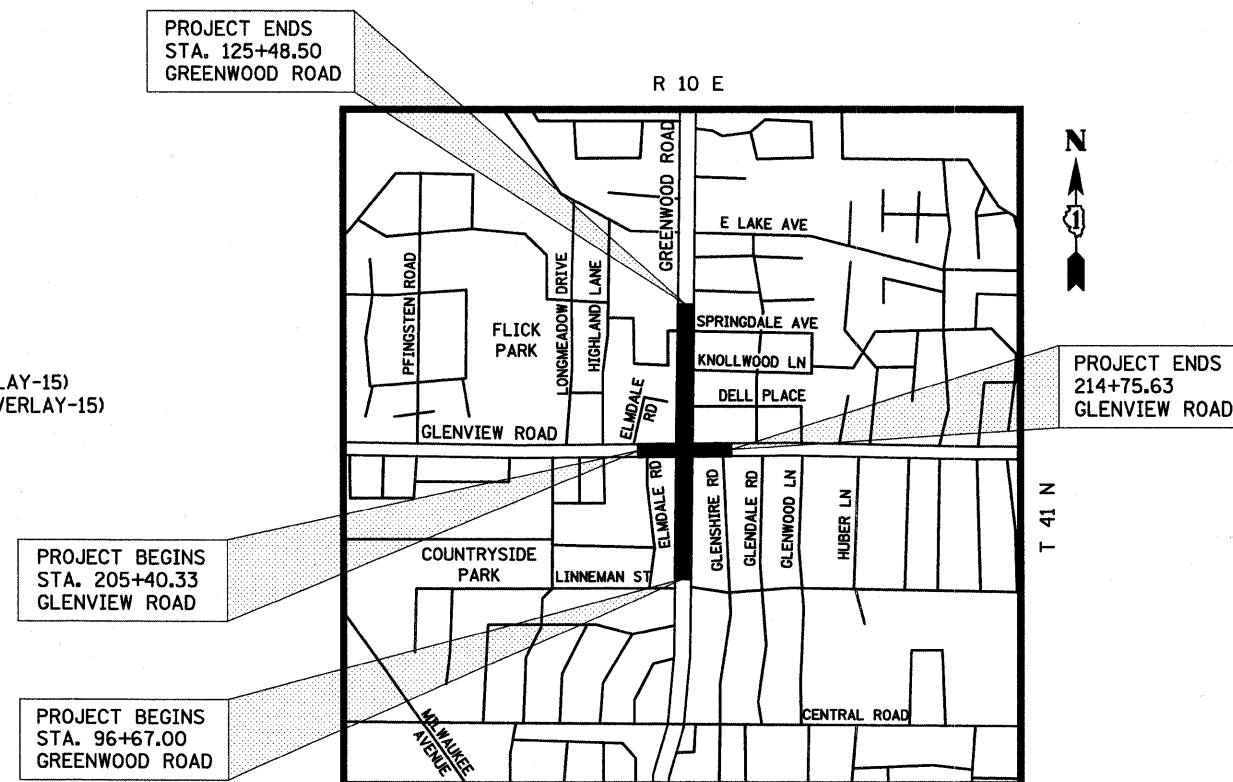
DESIGN DESIGNATIONS:
GREENWOOD ROAD - 14,700 (2030) COLLECTOR TWS-4 2.56 (HMA OVERLAY-15)
GLENVIEW ROAD - 14,200 (2030) MINOR ARTERIAL TWS-4 1.56 (HMA OVERLAY-15)



FULL SIZE PLANS HAVE BEEN PREPARED USING STANDARD ENGINEERING SCALES. REDUCED SIZED PLANS WILL NOT CONFORM TO STANDARD SCALES. IN MAKING MEASUREMENTS ON REDUCED PLANS, THE ABOVE SCALES MAY BE USED.

J.U.L.I.E.
JOINT UTILITY LOCATION INFORMATION FOR EXCAVATION
1-800-892-0123

CONTRACT NO. 63383



LOCATION MAP NOT TO SCALE

PROJECT LENGTH (NET AND GROSS):
GREENWOOD ROAD - 2881.5 FT. (0.55 MILE)
GLENVIEW ROAD - 935.3 FT. (0.18 MILE)
TOTAL - 3816.8 FT. (0.72 MILE)



11-23-09 11-30-11
REGISTERED P.E., STATE OF ILLINOIS EXPIRES

STATE OF ILLINOIS
DEPARTMENT OF TRANSPORTATION
DIVISION OF HIGHWAYS

APPROVED November 23, 2009
Russell N. Johnson
VILLAGE ENGINEER, VILLAGE OF GLENVIEW

PASSED DECEMBER 3, 2009
Chris Hester
DISTRICT ONE ENGINEER OF LOCAL ROADS & STREETS

RELEASING FOR BID BASED ON LIMITED REVIEW DECEMBER 7, 2009
Diana M. O'Keefe
DEPUTY DIRECTOR OF HIGHWAYS, REGION ONE ENGINEER

PRINTED BY THE AUTHORITY OF THE STATE OF ILLINOIS