

PLAN	DATE
BY	
REVISIONS	
NO.	
DATE	
BY	
DESCRIPTION	
1.	
2.	
3.	
4.	
5.	
6.	
7.	
8.	
9.	
10.	

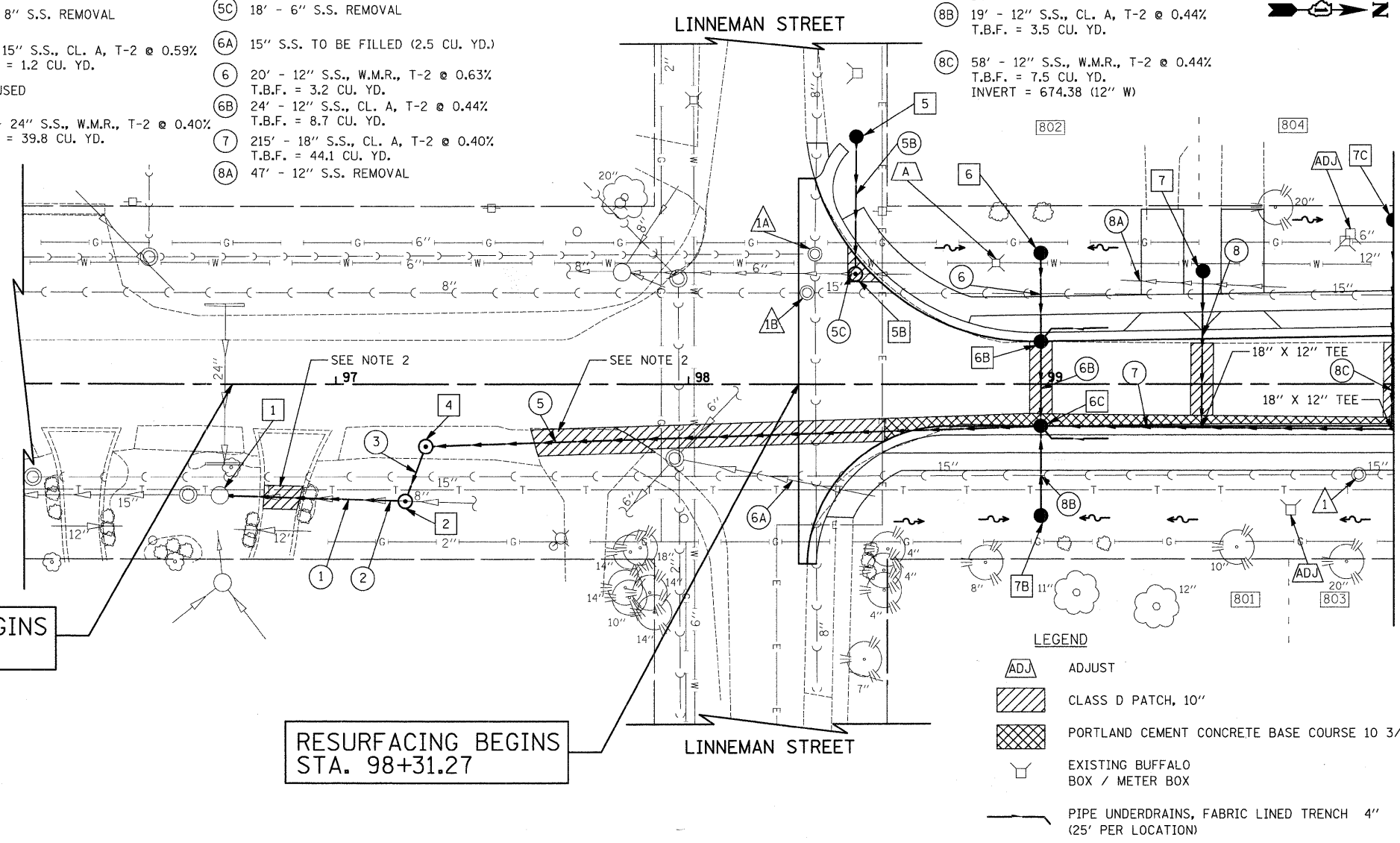
PROFILE	DATE
BY	
REVISIONS	
NO.	
DATE	
BY	
DESCRIPTION	
1.	
2.	
3.	
4.	
5.	
6.	
7.	
8.	
9.	
10.	

- 1 STA. 96+67.0, 31.7' RT EXISTING CB RIM = 674.06 INV = 670.30 (EX 15" S) INV = 670.80 (15" N)
- 2 STA. 97+19.7, 33.6' RT MH T-A, 4' DIA. TYPE 1 FR., C.L. RIM = 676.89 INV = 671.09 (15" S) INV = 672.97 (15" NW) INV = 671.72 (EX 8" N)
- 3 NOT USED
- 4 STA. 97+25.5, 17.8' RT MH T-A, 6' DIA. TYPE 1 FR., C.L., RESTRICTOR PLATE RIM = 677.95 INV = 673.07 (24" N) INV = 673.05 (15" SE)
- 5 STA. 98+47.7, 70.2' LT CB T-C TYPE 8 GRATE RIM = 677.45 INV = 675.82 (12" E)
- 5B STA. 98+47.4, 31.1' LT MH T-A, 4' DIA. TYPE 1 FR., C.L. RIM = 678.35 INV = 675.64 (12" W) INV = 675.08 (EX 6" S)
- 6 STA. 99+00.0, 37.0' LT CB T-C TYPE 8 GRATE RIM = 675.94 INV = 673.98 (12" E)
- 6B STA. 99+00.0, 12.1' LT CB T-A, 4' DIA. TYPE 24 F & G RIM = 678.76 INV = 673.85 (12" W) INV = 673.85 (12" E) INV = 675.26 (4" NW)
- 6C STA. 99+00.0, 12.0' RT CB T-A, 5' DIA. TYPE 24 F & G RIM = 678.75 INV = 673.74 (12" W) INV = 673.74 (18" N) INV = 673.74 (24" S) INV = 673.74 (12" E) INV = 675.25 (4" NE)
- 7 STA. 99+46.0, 31.8' LT CB T-C TYPE 8 GRATE RIM = 677.57 INV = 674.35 (12" E)
- 7B STA. 99+00.0, 37.4' RT CB T-C TYPE 8 GRATE RIM = 676.21 INV = 673.83 (12" W)
- 7C STA. 100+00.0, 46.2' LT CB T-C TYPE 8 GRATE RIM = 676.69 INV = 674.64 (12" E)

- 1 49' - 15" S.S., CL. A, T-2 @ 0.59% T.B.F. = 4.2 CU. YD.
- 2 53' - 8" S.S. REMOVAL
- 3 12' - 15" S.S., CL. A, T-2 @ 0.59% T.B.F. = 1.2 CU. YD.
- 4 NOT USED
- 5 169' - 24" S.S., W.M.R., T-2 @ 0.40% T.B.F. = 39.8 CU. YD.
- 5B 36' - 12" S.S., W.M.R., T-1 @ 0.50% T.B.F. = 2.6 CU. YD.
- 5C 18' - 6" S.S. REMOVAL
- 6A 15" S.S. TO BE FILLED (2.5 CU. YD.)
- 6 20' - 12" S.S., W.M.R., T-2 @ 0.63% T.B.F. = 3.2 CU. YD.
- 6B 24' - 12" S.S., CL. A, T-2 @ 0.44% T.B.F. = 8.7 CU. YD.
- 7 215' - 18" S.S., CL. A, T-2 @ 0.40% T.B.F. = 44.1 CU. YD.
- 8A 47' - 12" S.S. REMOVAL

- 8 43' - 12" S.S., CL. A, T-2 @ 0.44% T.B.F. = 10.1 CU. YD. INVERT = 674.16 (12" W)
- 8B 19' - 12" S.S., CL. A, T-2 @ 0.44% T.B.F. = 3.5 CU. YD.
- 8C 58' - 12" S.S., W.M.R., T-2 @ 0.44% T.B.F. = 7.5 CU. YD. INVERT = 674.38 (12" W)

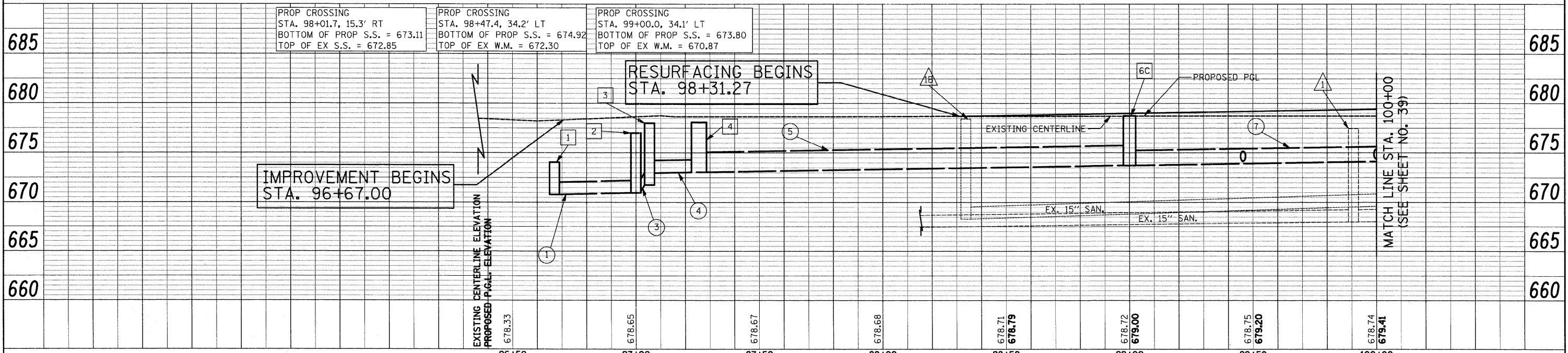
- 1A STA. 98+36.0, 36.8' LT SAN. MH TO BE ADJUSTED EX RIM = 678.36 PR RIM = 678.38
- 1B STA. 98+33.7, 25.8' LT SAN. MH TO BE ADJUSTED EX RIM = 678.44 PR RIM = 678.46
- 1 STA. 99+90.1, 25.9' RT SAN. MH TO BE RECON. EX RIM = 677.05 PR RIM = 679.24
- A STA. 98+87.3, 34.2' RT V.V. TO BE RECON. EX RIM = 677.42 PR RIM = 676.91



IMPROVEMENT BEGINS STA. 96+67.00

RESURFACING BEGINS STA. 98+31.27

- NOTE:
- REPLACE WATER SERVICES (1.5") AT THE FOLLOWING HOUSES: 803 AND 804.
  - DRIVEWAY PATCH TO BE PAID FOR AS "DRIVEWAY PAVEMENT REMOVAL" AND "HOT-MIX ASPHALT DRIVEWAY PAVEMENT, 8", SPECIAL." REPLACEMENT OF BRICK PAVERS TO BE PAID FOR AS "BRICK PAVER REMOVAL AND REPLACEMENT".



FILE NAME = J:\2275\Cad\Sheet\2275.D&U.01.dgn	USER NAME = kpk	DESIGNED - JAT	REVISED -	<b>STATE OF ILLINOIS DEPARTMENT OF TRANSPORTATION</b>	<b>DRAINAGE AND UTILITIES</b>	F.A.U. RTE. 2743	SECTION 05-00161-00-CH	COUNTY COOK	TOTAL SHEETS 112	SHEET NO. 38	
PLOT SCALE = 20,0000' / IN.	CHECKED - DJK	DATE - 11-23-09	REVISED -			SCALE: 1"=20' SHEET NO. 1 OF 11 SHEETS STA. 96+67 TO STA. 100+00			CONTRACT NO. 63383		
PLOT DATE = 11/25/2009	DATE - 11-23-09	REVISED -	REVISED -			FED. ROAD DIST. NO. 1 ILLINOIS FED. AID PROJECT M-80031543					