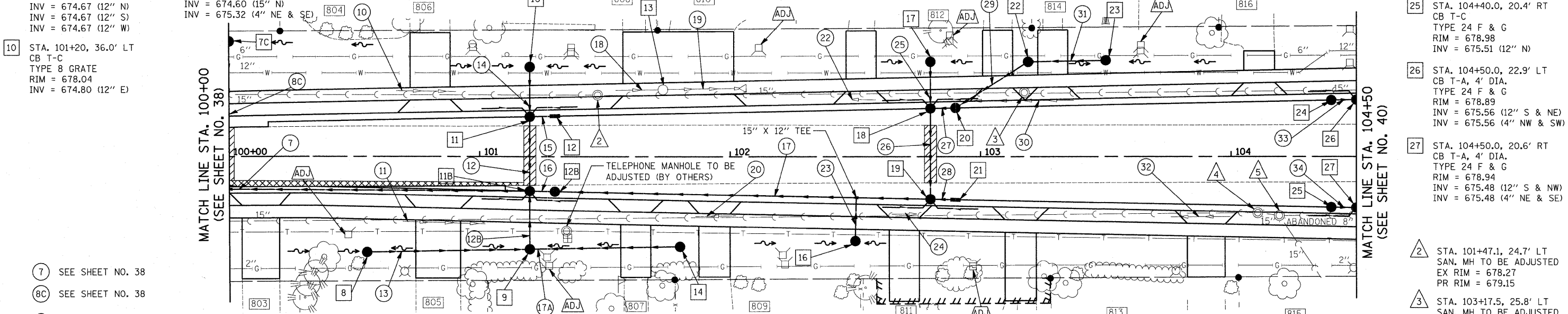


- 7C SEE SHEET NO. 38
- 8 STA. 100+55.0, 38.2' RT CB T-C TYPE 8 GRATE RIM = 676.56 INV = 674.94 (12" N)
- 9 STA. 101+20.0, 37.0' RT CB T-A, 4' DIA. TYPE 8 GRATE RIM = 676.76 INV = 674.67 (12" N) INV = 674.67 (12" S) INV = 674.67 (12" W)
- 10 STA. 101+20, 36.0' LT CB T-C TYPE 8 GRATE RIM = 678.04 INV = 674.80 (12" E)
- 11 STA. 101+20.0, 16.0' LT CB T-A, 4' DIA. TYPE 24 F & G RIM = 678.78 INV = 674.73 (12" W & E) INV = 674.78 (12" N) INV = 675.28 (4" NW & SW)
- 11B STA. 101+20.0, 13.8' RT CB T-A, 4' DIA. TYPE 24 F & G RIM = 678.82 INV = 674.60 (12" W & E) INV = 674.60 (18" S) INV = 674.60 (15" N) INV = 675.32 (4" NE & SE)
- 12 STA. 101+30.0, 16.3' LT INLET T-A TYPE 24 F & G RIM = 678.81 INV = 674.81 (12" S)
- 12B STA. 101+30.0, 14.0' RT CB T-A, 4' DIA. TYPE 24 F & G RIM = 678.86 INV = 674.63 (15" S) INV = 674.64 (15" N)
- 13 STA. 101+73.2, 26.9' LT CB TO BE REMOVED
- 14 STA. 101+80.0, 36.0' RT CB T-C TYPE 8 GRATE RIM = 677.73 INV = 674.92 (12" S)
- 15 NOT USED
- 16 STA. 102+50.0, 33.8' RT CB T-C TYPE 8 GRATE RIM = 678.52 INV = 675.31 (12" W)
- 17 STA. 102+80.0, 38.0' LT CB T-C TYPE 8 GRATE RIM = 678.73 INV = 675.44 (12" E)
- 18 STA. 102+80.0, 19.4' LT CB T-A, 4' DIA. TYPE 24 F & G RIM = 678.90 INV = 675.38 (12" N, W, & E) INV = 675.40 (4" NW & SW)
- 19 STA. 102+80.0, 17.1' RT CB T-A, 4' DIA. TYPE 24 F & G RIM = 678.94 INV = 675.22 (12" N & W) INV = 675.22 (15" S) INV = 675.44 (4" NE & SE)
- 20 STA. 102+90.0, 19.6' LT CB T-A, 4' DIA. TYPE 24 F & G RIM = 678.94 INV = 675.41 (12" S) INV = 675.41 (12" NW)
- 21 STA. 102+90.0, 17.3' RT INLET T-A TYPE 24 F & G RIM = 678.98 INV = 675.25 (12" S)
- 22 STA. 103+19.0, 38.0' LT CB T-A, 4' DIA. TYPE 8 GRATE RIM = 678.93 INV = 675.54 (12" SE) INV = 675.54 (12" N)
- 23 STA. 103+50.0, 38.5' LT CB T-C TYPE 8 GRATE RIM = 678.89 INV = 675.66 (12" S)
- 24 STA. 104+40.0, 22.7' LT CB T-C TYPE 24 F & G RIM = 678.94 INV = 675.59 (12" N)
- 25 STA. 104+40.0, 20.4' RT CB T-C TYPE 24 F & G RIM = 678.98 INV = 675.51 (12" N)
- 26 STA. 104+50.0, 22.9' LT CB T-A, 4' DIA. TYPE 24 F & G RIM = 678.89 INV = 675.56 (12" S & NE) INV = 675.56 (4" NW & SW)
- 27 STA. 104+50.0, 20.6' RT CB T-A, 4' DIA. TYPE 24 F & G RIM = 678.94 INV = 675.48 (12" S & NW) INV = 675.48 (4" NE & SE)
- 28 STA. 101+47.1, 24.7' LT SAN. MH TO BE ADJUSTED EX RIM = 678.27 PR RIM = 679.15
- 29 STA. 103+17.5, 25.8' LT SAN. MH TO BE ADJUSTED EX RIM = 678.79 PR RIM = 679.47
- 30 STA. 104+10.7, 22.6' RT SAN. MH TO BE ADJUSTED EX RIM = 678.12 PR RIM = 679.49
- 31 STA. 104+19.3, 23.7' RT SAN. MH TO BE ADJUSTED EX RIM = 678.01 PR RIM = 679.48

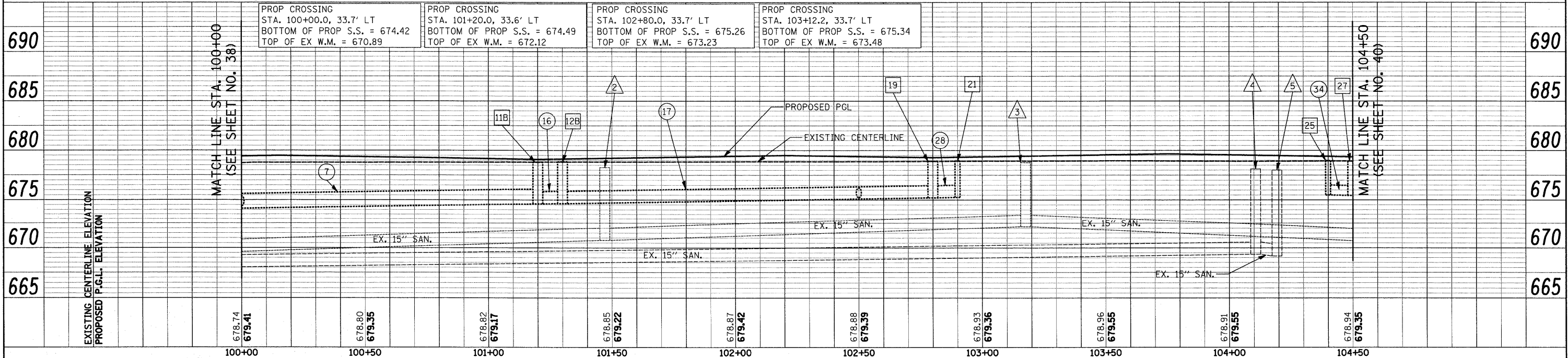
DATE	
BY	
REVISION	
NO.	
DATE	
BY	
REVISION	
NO.	

DATE	
BY	
REVISION	
NO.	
DATE	
BY	
REVISION	
NO.	



- 7 SEE SHEET NO. 38
- 8C SEE SHEET NO. 38
- 9 NOT USED
- 10 24' - 15" S.S. REMOVAL
- 11 33' - 12" S.S. REMOVAL
- 12 30' - 12" S.S., CL. A, T-2 @ 0.44% T.B.F. = 8.0 CU. YD.
- 12B 17' - 12" S.S., CL. A, T-2 @ 0.44% T.B.F. = 4.3 CU. YD.
- 13 62' - 12" S.S., CL. A, T-1 @ 0.44% T.B.F. = 2.9 CU. YD.
- 14 15' - 12" S.S., W.M.R., T-2 @ 0.44% T.B.F. = 3.5 CU. YD.
- 15 7' - 12" S.S., CL. A, T-1 @ 0.44% T.B.F. = 1.2 CU. YD.
- 16 6' - 15" S.S., CL. A, T-1 @ 0.44% T.B.F. = 1.1 CU. YD.
- 17A 57' - 12" S.S., CL. A, T-1 @ 0.44% T.B.F. = 1.8 CU. YD.
- 17 146' - 15" S.S., CL. A, T-1 @ 0.40% T.B.F. = 20.9 CU. YD.
- 18 17' - 12" S.S. REMOVAL
- 19 34' - 12" S.S. REMOVAL
- 20 16' - 12" S.S. REMOVAL
- 21 NOT USED
- 22 9' - 12" S.S. REMOVAL
- 23 16' - 12" S.S., CL. A, T-1 @ 0.44% T.B.F. = 3.3 CU. YD. INVERT = 675.24 (12" E)
- 24 10' - 12" S.S. REMOVAL
- 25 14' - 12" S.S., W.M.R., T-1 @ 0.44% T.B.F. = 3.0 CU. YD.
- 26 36' - 12" S.S., CL. A, T-1 @ 0.44% T.B.F. = 7.5 CU. YD.
- 27 6' - 12" S.S., CL. A, T-1 @ 0.44% T.B.F. = 0.8 CU. YD.
- 28 7' - 12" S.S., CL. A, T-1 @ 0.40% T.B.F. = 1.0 CU. YD.
- 29 29' - 12" S.S., W.M.R., T-1 @ 0.44% T.B.F. = 6.1 CU. YD.
- 30 40' - 12" S.S. REMOVAL
- 31 28' - 12" S.S., W.M.R., T-1 @ 0.44% T.B.F. = 2.3 CU. YD.
- 32 24' - 15" S.S. REMOVAL
- 33 7' - 12" S.S., CL. A, T-1 @ 0.44% T.B.F. = 1.0 CU. YD.
- 34 7' - 12" S.S., CL. A, T-1 @ 0.44% T.B.F. = 1.0 CU. YD.

NOTE: REPLACE WATER SERVICES (1.5') AT THE FOLLOWING HOUSES: 808, 812, 814, 816, 807, 809, AND 811.



FILE NAME = J:\2275\Cad\Sheet\2275_0&U_02.dgn	USER NAME = djc	DESIGNED - JAT	REVISED -	STATE OF ILLINOIS DEPARTMENT OF TRANSPORTATION		DRAINAGE AND UTILITIES		F.A. RTE. 2743	SECTION 05-00161-00-CH	COUNTY COOK	TOTAL SHEETS 112	SHEET NO. 39
PLOT SCALE = 28.0000' / IN.		CHECKED - DJK	REVISED -	SCALE: 1"=20'		SHEET NO. 2 OF 11 SHEETS		STA. 100+00 TO STA. 104+50		CONTRACT NO. 63383		
PLOT DATE = 3/19/2010		DATE = 03-19-10	REVISED -	FED. ROAD DIST. NO. 1		ILLINOIS FED. AID PROJECT M-8003543						