

- 26 SEE SHEET NO. 39
- 27 SEE SHEET NO. 39
- 28 STA. 104+80.0, 15.2' RT MH T-A, 4' DIA. TYPE 1 FR., C.L. RIM = 679.20 INV = 675.35 (12" SE) INV = 675.35 (12" SW) INV = 675.35 (15" N)
- 29 STA. 105+25.5, 32.6' LT CB TO BE REMOVED
- 30 STA. 105+25.0, 41.0' RT CB T-C TYPE 8 GRATE RIM = 678.13 INV = 676.02 (12" W)
- 31 STA. 106+00.0, 44.0' LT INLET T-A TYPE 8 GRATE RIM = 678.47 INV = 675.22 (12" NE)
- 32 STA. 106+04.8, 32.3' TL CB TO BE REMOVED
- 33 STA. 106+00.0, 40.2' RT CB T-C TYPE 8 GRATE RIM = 677.94 INV = 675.28 (12" NW)
- 34 STA. 106+50.0, 27.0' LT CB T-A, 4' DIA. TYPE 24 F & G RIM = 678.96 INV = 674.96 (12" N) INV = 674.97 (12" SW) INV = 675.46 (4" NW & SW)
- 35 STA. 106+50.0, 24.7' RT CB T-A, 4' DIA. TYPE 24 F & G RIM = 679.01 INV = 675.01 (12" N) INV = 675.03 (12" SE) INV = 675.51 (4" NE & SE)
- 36 STA. 106+60.0, 27.3' LT CB T-A, 4' DIA. TYPE 24 F & G RIM = 678.99 INV = 676.28 (12" NW) INV = 674.93 (12" S) INV = 674.84 (12" E)

- 37 STA. 106+60.0, 18.9' RT MH T-A, 4' DIA. TYPE 1 FR., C.L. RIM = 679.16 INV = 674.65 (18" N) INV = 674.65 (15" S) INV = 674.94 (12" E) INV = 674.65 (12" W)

- 38 STA. 106+60.0, 24.9' RT CB T-A, 4' DIA. TYPE 24 F & G RIM = 679.04 INV = 674.96 (12" W) INV = 675.00 (12" E) INV = 674.98 (12" S)
- 39 STA. 106+60.0, 41.0' RT CB T-C TYPE 8 GRATE RIM = 677.50 INV = 675.06 (12" W)

- 40 STA. 106+70.0, 44.0' LT INLET T-A TYPE 8 GRATE RIM = 678.24 INV = 676.36 (12" SE)
- 41 STA. 106+71.7, 34.4' LT CB TO BE REMOVED
- 42 STA. 107+30.0, 41.0' RT CB T-C TYPE 8 GRATE RIM = 678.74 INV = 674.83 (12" W)

- 43 STA. 107+45.0, 44.0' LT INLET T-A TYPE 8 GRATE RIM = 678.50 INV = 676.43 (12" E)
- 44 STA. 107+44.8, 35.8' LT CB TO BE REMOVED
- 44B STA. 107+46.0, 33.6' LT CB T-A, 4' DIA. TYPE 1 FR., C.L. RIM = 679.60 INV = 674.67 (12" E) INV = 676.40 (12" W) INV = 676.45 (12" NW)

- 45A STA. 107+36.8, 18.3' RT MH T-A, 5' DIA. TYPE 1 FR., C.L. RIM = 679.44 INV = 674.43 (18" S) INV = 674.42 (18" N) INV = 674.43 (12" W & SE)
- 45 STA. 107+77.0, 45.0' LT INLET T-A TYPE 8 GRATE RIM = 678.60 INV = 676.60 (12" SE)

- 46 STA. 108+40.0, 28.5' LT CB T-C TYPE 24 F & G RIM = 678.88 INV = 675.38 (12" N)
- 47 STA. 108+42.8, 22.4' LT CB TO BE REMOVED

- 48 STA. 108+40.0, 28.5' RT CB T-C TYPE 24 F & G RIM = 678.88 INV = 675.38 (12" N)
- 49 STA. 108+43.5, 30.4' RT CB TO BE REMOVED
- 50 STA. 108+61.9, 48.7' LT CB TO BE ADJUSTED EX RIM = 677.76 PR RIM = 678.10 INV = 675.21 (EX 6" W) INV = 675.11 (12" SE)

- 51 STA. 108+50.0, 28.5' LT CB T-A, 4' DIA. TYPE 24 F & G RIM = 678.83 INV = 674.95 (12" E) INV = 675.28 (12" S) INV = 675.03 (12" NW) INV = 675.33 (4" NW & SW)

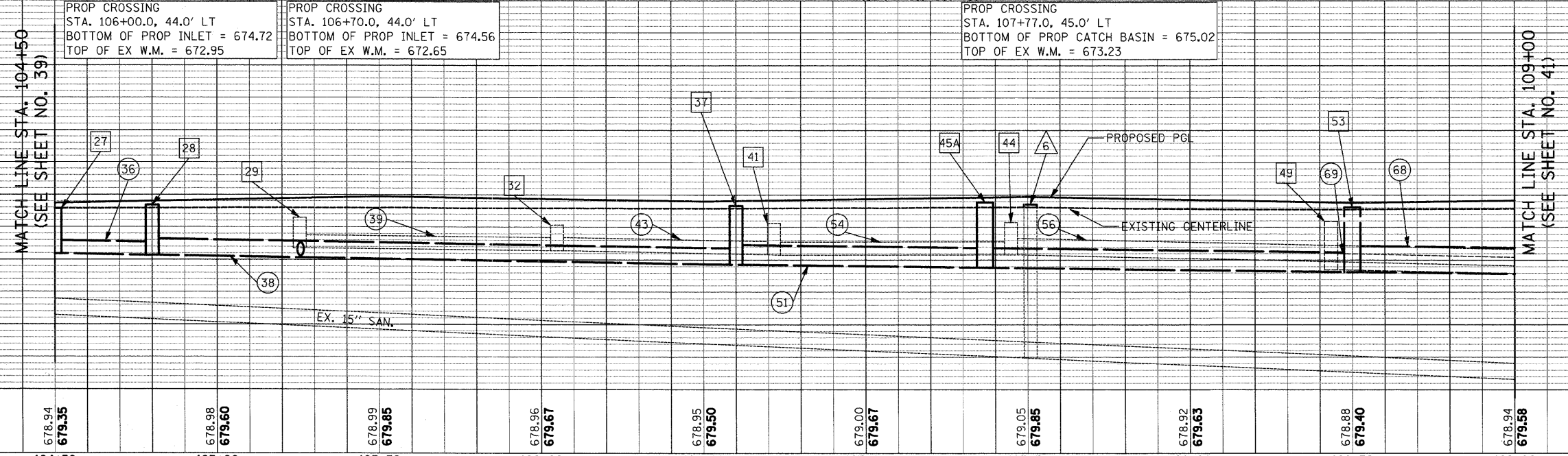
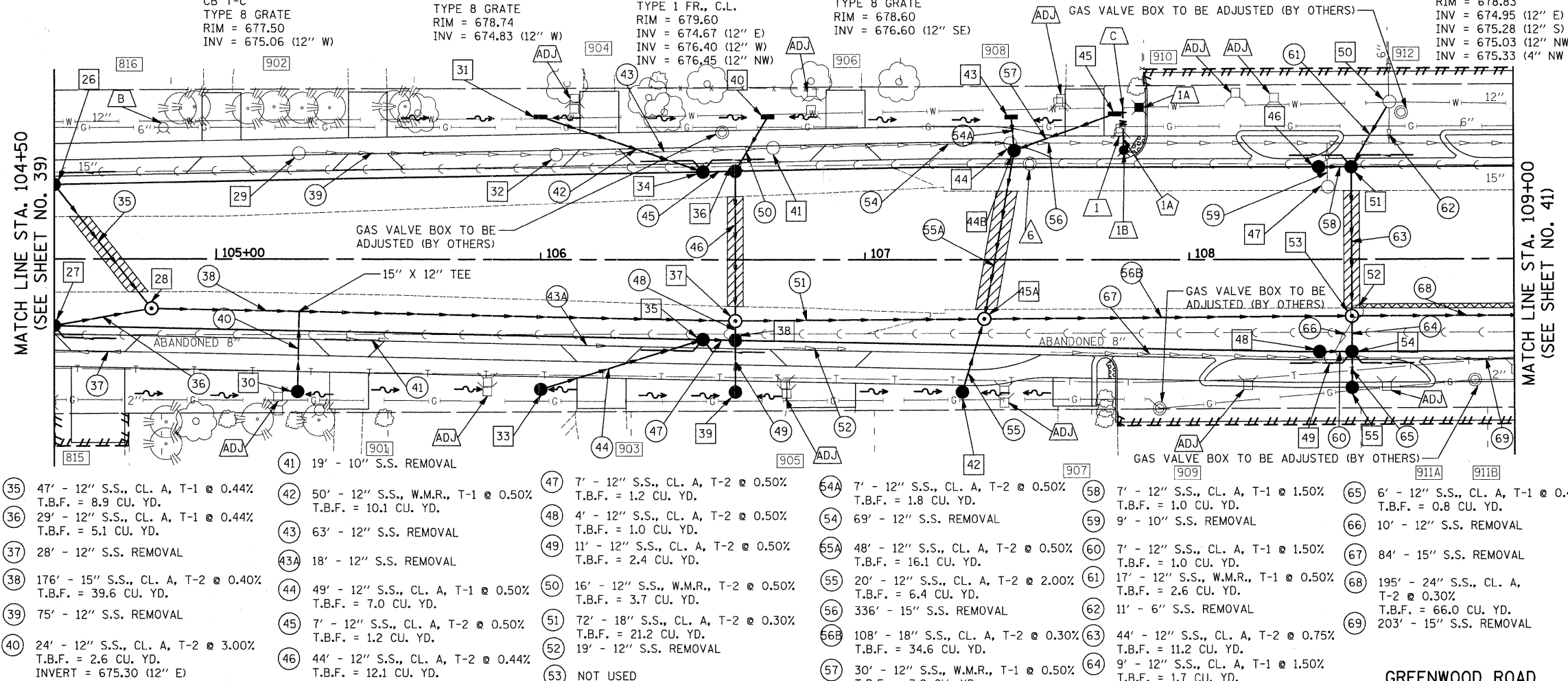
- 52 STA. 108+51.6, 16.1' RT CB TO BE REMOVED
- 53 STA. 108+50.0, 17.5' RT MH T-A, 5' DIA. TYPE 1 FR., C.L. RIM = 679.05 INV = 674.09 (24" N) INV = 674.09 (18" S) INV = 675.15 (12" E) INV = 674.62 (12" W)

- 54 STA. 108+50.0, 28.5' RT CB T-A, 4' DIA. TYPE 24 F & G RIM = 678.83 INV = 675.28 (12" W, S, E) INV = 675.33 (4" NE & SE)
- 55 STA. 108+50.0, 39.7' RT CB T-C TYPE 23 F & G RIM = 678.63 INV = 675.31 (12" W)

- B STA. 104+83.7, 40.6' LT FH TO BE ADJUSTED
- C STA. 107+79.5, 46.9' LT CONNECT TO EXISTING WATERMAIN 12" (AT EX. TEE)
- 1A STA. 107+84.6, 47.0' LT VALVE VAULT, TYPE A, 5' DIA. TYPE 1 FR., C.L. GATE VALVE 12" CONNECT TO EXISTING WATERMAIN 12" RIM = 678.70

- 1 STA. 107+78.3, 39.3' LT FH TO BE REMOVED
- 1B STA. 107+79.8, 33.7' LT FH W/ AUX VALVE AND VALVE BOX
- 1A 12' - 6" DUCTILE IRON WATERMAIN T.B.F. = 6.3 CU. YD.
- 6 STA. 107+50.8, 29.6' LT SAN. MH TO BE ADJUSTED EX RIM = 679.05 PR RIM = 679.28 (E/P)

NOTE:  
REPLACE WATER SERVICES (1.5") AT THE FOLLOWING HOUSES:  
904, 906, 908, 901, 903, 905, AND 907.



|                  |                  |                  |                  |                  |                  |                  |                  |                  |                  |
|------------------|------------------|------------------|------------------|------------------|------------------|------------------|------------------|------------------|------------------|
| 104+50           | 105+00           | 105+50           | 106+00           | 106+50           | 107+00           | 107+50           | 108+00           | 108+50           | 109+00           |
| 678.94<br>679.35 | 678.99<br>679.60 | 678.99<br>679.85 | 678.96<br>679.67 | 678.95<br>679.50 | 679.00<br>679.67 | 679.05<br>679.85 | 678.92<br>679.63 | 678.88<br>679.40 | 678.94<br>679.58 |

FILE NAME = J:\2275\Cad\Sheet\2275.D&U.03.dgn  
USER NAME = k-r-k  
DESIGNED - JAT  
DRAWN - JAT  
CHECKED - DJK  
PLOT SCALE = 20,000 / IN.  
PLOT DATE = 11/25/2009

DATE = 11-23-09

REVISIONS:  
REVISED -  
REVISED -  
REVISED -  
REVISED -

**STATE OF ILLINOIS  
DEPARTMENT OF TRANSPORTATION**

**DRAINAGE AND UTILITIES**

SCALE: 1"=20'  
SHEET NO. 3 OF 11 SHEETS  
STA. 104+50 TO STA. 109+00

|                   |                           |                |                     |                 |                    |
|-------------------|---------------------------|----------------|---------------------|-----------------|--------------------|
| F.A. RTE.<br>2743 | SECTION<br>05-00161-00-CH | COUNTY<br>COOK | TOTAL SHEETS<br>112 | SHEET NO.<br>40 | CONTRACT NO. 63383 |
|-------------------|---------------------------|----------------|---------------------|-----------------|--------------------|

FED. ROAD DIST. NO. 1 | ILLINOIS FED. AID PROJECT M-8003(543)