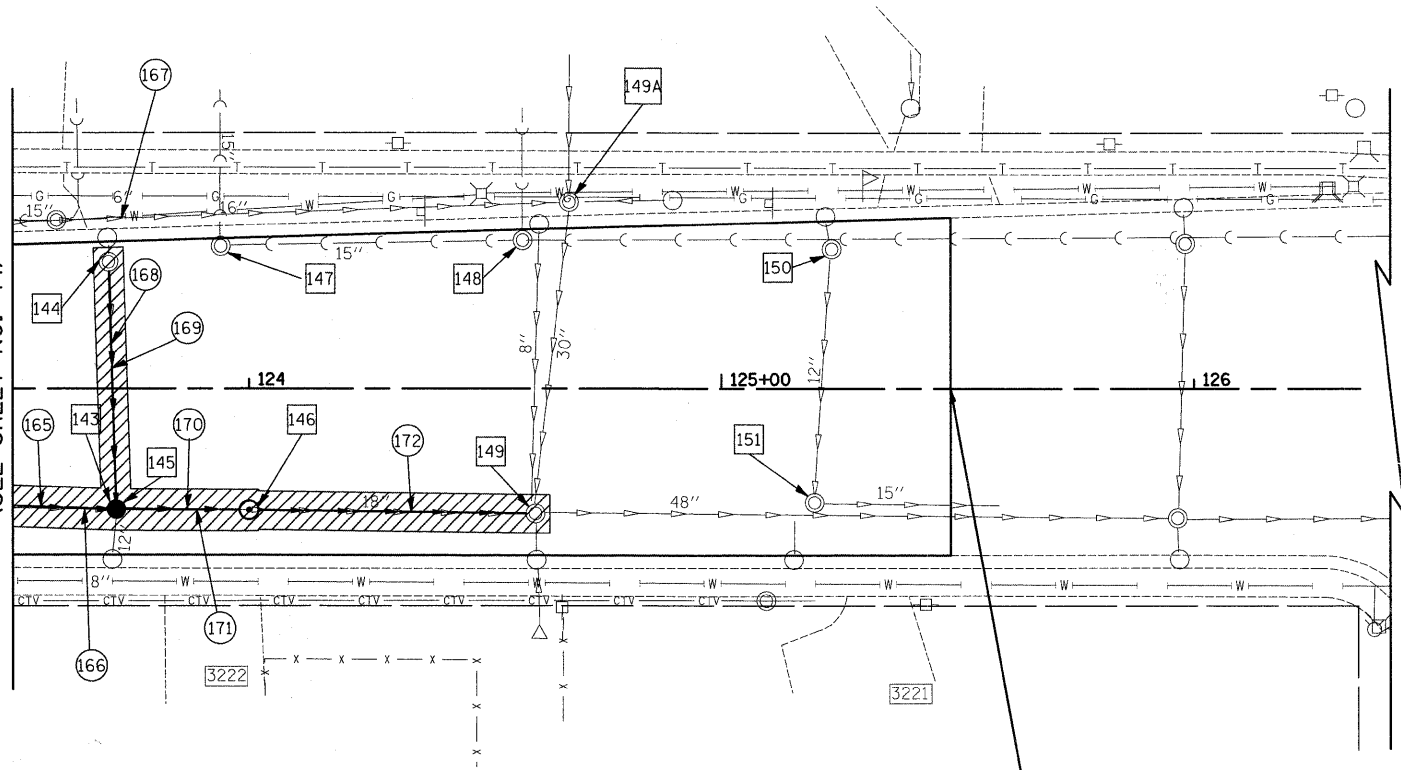


DATE: _____ BY: _____
 SURVEYED _____ CHECKED _____
 PLOTTED _____ CHECKED _____
 PLAN NO. _____ CAD FILE NAME _____

DATE: _____ BY: _____
 SURVEYED _____ CHECKED _____
 PLOTTED _____ CHECKED _____
 PROFILE NO. _____ STRUCTURE NOTATIONS CHKD _____



MATCH LINE STA. 123+50
(SEE SHEET NO. 44)

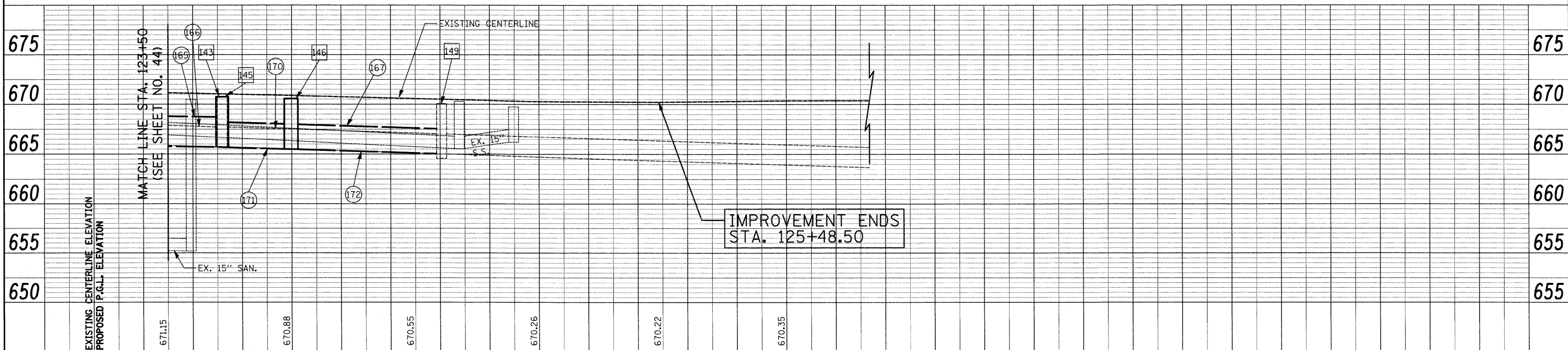


IMPROVEMENT ENDS
STA. 125+48.50

- 143 STA. 123+71.9, 25.6' RT MH TO BE REMOVED
- 144 STA. 123+70.3, 26.6' LT FRAME AND LID TO BE ADJUSTED, SPECIAL EX RIM = 670.57 PR RIM = 670.57 INV = 667.17 (12" E)
- 145 STA. 123+71.9, 25.6' RT CB T-A, 5' DIA. TYPE 1 FR., C.L. RIM = 670.71 INV = 665.71 (36" S) INV = 665.71 (12" W) INV = 665.67 (36" N) INV = 666.21 (EX 12" E)
- 146 STA. 124+00.0, 25.8' RT MH T-A, 6' DIA. TYPE 1 FR., C.L., RESTRICTOR PLATE RIM = 670.55 INV = 665.50 (36" S) INV = 665.48 (30" N)
- 147 STA. 123+94.1, 29.9' LT FRAME AND LID TO BE ADJUSTED, SPECIAL EX RIM = 670.36 PR RIM = 670.36
- 148 STA. 124+57.9, 31.1' LT FRAME AND LID TO BE ADJUSTED, SPECIAL EX RIM = 669.90 PR RIM = 669.90
- 149 STA. 124+60.6, 26.6' RT FRAME AND LID TO BE ADJUSTED, SPECIAL EX RIM = 670.05 INV = 665.05 (30" S) INV = 664.59 (EX 48" N) INV = 665.73 (EX 30" W)
- 149A STA. 124+67.8, 39.3' LT EXISTING MANHOLE BRICK AND MORTAR SOUTH INVERT (INCLUDED IN COST OF FILLING STORM SEWER)
- 150 STA. 125+23.3, 29.3' LT FRAME AND LID TO BE ADJUSTED, SPECIAL EX RIM = 669.70 PR RIM = 669.70
- 151 STA. 125+19.7, 24.2' RT FRAME AND LID TO BE ADJUSTED, SPECIAL EX RIM = 669.79 PR RIM = 669.79

- 165 SEE SHEET NO. 44
- 166 SEE SHEET NO. 44
- 167 SEE SHEET NO. 44
- 168 48' - 12" S.S., CL.A, T-2 @ 3.04% T.B.F. = 14.6 CU. YD.
- 169 48' - 12" S.S. REMOVAL
- 170 84' - 18" S.S. REMOVAL
- 171 23' - 36" S.S., CL.A, T-1 @ 0.74% T.B.F. = 7.4 CU. YD.
- 172 56' - 30" S.S., CL.A, T-1 @ 0.77% T.B.F. = 20.3 CU. YD.

GREENWOOD ROAD



IMPROVEMENT ENDS
STA. 125+48.50

FILE NAME = J:\2275\Cad\Sheet\2275_D&U_08.dgn	USER NAME = kpk	DESIGNED - JAT	REVISED -	STATE OF ILLINOIS	DRAINAGE AND UTILITIES	F.A. RTE. 2743	SECTION 05-00161-00-CH	COUNTY COOK	TOTAL SHEETS 112	SHEET NO. 45	
PLOT SCALE = 20.0000' / IN.		DRAWN - JAT		DEPARTMENT OF TRANSPORTATION		SCALE: 1"=20'		SHEET NO. 8 OF 11 SHEETS		STA. 123+50 TO STA. 125+48.5	
PLOT DATE = 11/25/2009		CHECKED - DJK				FED. ROAD DIST. NO. 1		ILLINOIS FED. AID PROJECT		CONTRACT NO. 63383	
		DATE - 11-23-09								M-8003(543)	