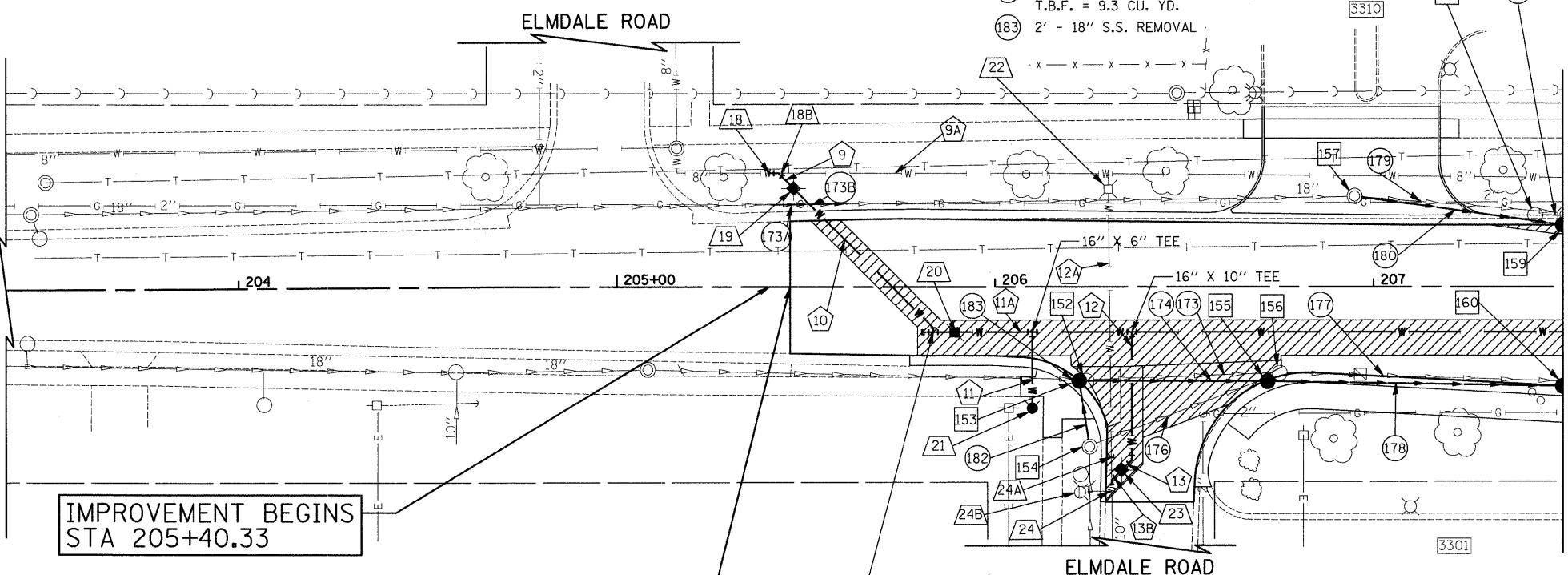


- 152 STA. 206+24.2, 24.8' RT CB TO BE REMOVED
- 153 STA. 206+22.3, 24.9' RT CB T-A, 5' DIA. TYPE 24 F & G RIM = 679.72 INV = 673.90 (24" E) INV = 673.92 (EX 15" W) INV = 674.03 (12" S)
- 154 STA. 206+25.0, 42.2' RT MH TO BE ADJUSTED EX RIM = 679.02 PR RIM = 679.16 INV = 674.17 (12" N) INV = 674.17 (EX S) INV = 674.02 (EX 12" NE, TO BE ABANDONED)
- 155 STA. 206+72.1, 25.0' RT CB T-A, 5' DIA. TYPE 24 F & G RIM = 679.50 INV = 673.75 (24" W) INV = 673.75 (24" E)
- 156 STA. 206+75.3, 22.8' RT CB TO BE REMOVED
- 157 STA. 206+95.0, 24.2' LT MH TO BE ADJUSTED EX RIM = 679.71 PR RIM = 680.00 INV = 676.21 (EX 18" W) INV = 676.21 (18" E)
- 158 STA. 207+42.7, 19.1' LT CB TO BE REMOVED
- 159 STA. 207+50.0, 16.5' LT CB T-A, 4' DIA. TYPE 24 F & G RIM = 679.79 INV = 675.70 (18" W) INV = 675.70 (18" E)
- 160 STA. 207+50.0, 26.2' RT CB T-A, 5' DIA. TYPE 24 F & G RIM = 679.59 INV = 673.53 (24" W) INV = 673.53 (24" E)

- 173A 20' - 18" S.S. REMOVAL
- 173B 20' - 18" S.S., W.M.R., T-1 MATCH EXISTING SLOPE T.B.F. = 2.4 CU. YD.
- 173 47' - 12" S.S. REMOVAL
- 174 50' - 24" S.S., W.M.R., T-2 @ 0.30% T.B.F. = 34.2 CU. YD.
- 175 NOT USED
- 176 50' - 8" S.S. REMOVAL
- 177 113' - 24" S.S. REMOVAL
- 178 72' - 24" S.S., CL.A, T-2 @ 0.30% T.B.F. = 29.7 CU. YD.
- 179 52' - 8" S.S. REMOVAL
- 180 51' - 18" S.S., W.M.R., T-1 @ 1.00% T.B.F. = 11.2 CU. YD.
- 181 4' - 8" S.S. REMOVAL
- 182 14' - 12" S.S., CL. A, T-2 @ 1.00% T.B.F. = 9.3 CU. YD.
- 183 2' - 18" S.S. REMOVAL

- 18 STA. 205+40.3, 30.3' LT CONNECT TO EXISTING WATER MAIN 8"
- 18B STA. 205+43.7, 30.3' LT CUT AND CAP EXISTING WATERMAIN
- 19 STA. 205+46.8, 26.2' LT VALVE VAULT, TYPE A, 5' DIA. TYPE 1 FR., C.L. GATE VALVE 8" RIM = 680.72
- 20 STA. 205+89.4, 12.0' RT VALVE VAULT, TYPE A, 6' DIA. TYPE 1 FR., C.L. 16" BUTTERFLY VALVE RIM = 680.51
- 21 STA. 206+09.9, 32.1' RT FH W/ AUX VALVE & VALVE BOX
- 22 STA. 206+29.9, 25.9' LT V.V. TO BE REMOVED
- 23 STA. 206+33.5, 48.4' RT VALVE VAULT, TYPE A, 5' DIA. TYPE 1 FR., C.L. GATE VALVE 10" RIM = 678.30
- 24 STA. 206+30.8, 54' RT CONNECT TO EXISTING WATERMAIN 10" (REMOVE EXISTING TEE)
- 24A STA. 206+30.7, 45.0' RT CUT AND CAP EXISTING WATERMAIN
- 24B STA. 206+23, 54.2' RT FIRE HYDRANT TO BE REMOVED
- 9 8' - 8" DUCTILE IRON WATERMAIN T.B.F. = 0.0 CU. YD.
- 9A FILL EXISTING WATERMANS, 8" (4.0 CU. YD.)
- 10 58' - 8" DUCTILE IRON WATERMAIN T.B.F. = 34.0 CU. YD.
- 11A 255' - 16" DUCTILE IRON WATERMAIN T.B.F. = 180.6 CU. YD.
- 11 20' - 6" DUCTILE IRON WATERMAIN T.B.F. = 13.6 CU. YD.
- 12A FILL EXISTING WATERMANS, 10" (1.5 CU. YD.)
- 12 34' - 10" DUCTILE IRON WATERMAIN T.B.F. = 23.8 CU. YD.
- 13 4' - 10" DUCTILE IRON WATERMAIN T.B.F. = 2.8 CU. YD.
- 13B 4' - 10" DUCTILE IRON WATERMAIN T.B.F. = 2.8 CU. YD.

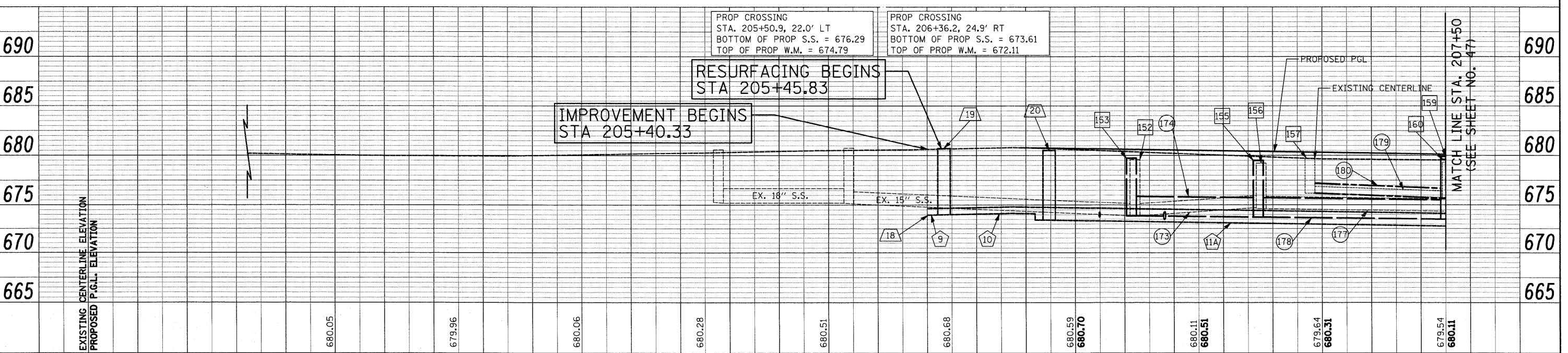


IMPROVEMENT BEGINS STA 205+40.33

RESURFACING BEGINS STA 205+45.83

16" X 8" TEE (CAP WEST END)

NOTE:
1. ALL WATERMAIN BENDS SHOWN ARE 45° BENDS. THE COST OF THE BENDS SHALL BE PAID FOR AS "WATERMAIN FITTINGS".



FILE NAME = J:\2275\Cad\Sheet\2275.D&U.09.dgn	USER NAME = k-r-k	DESIGNED - JAT	REVISED -	STATE OF ILLINOIS	DRAINAGE AND UTILITIES	F.A. RTE. 2743	SECTION 05-00161-00-CH	COUNTY COOK	TOTAL SHEETS 112	SHEET NO. 46	
PLOT SCALE = 20.0000' / IN.				DEPARTMENT OF TRANSPORTATION				CONTRACT NO. 63383			
PLOT DATE = 11-25-2009				DATE = 11-23-09				SCALE: 1"=20' SHEET NO. 9 OF 11 SHEETS STA. 205+77.5 TO STA. 207+50			
FED. ROAD DIST. NO. 1 ILLINOIS FED. AID PROJECT M-80031543											