

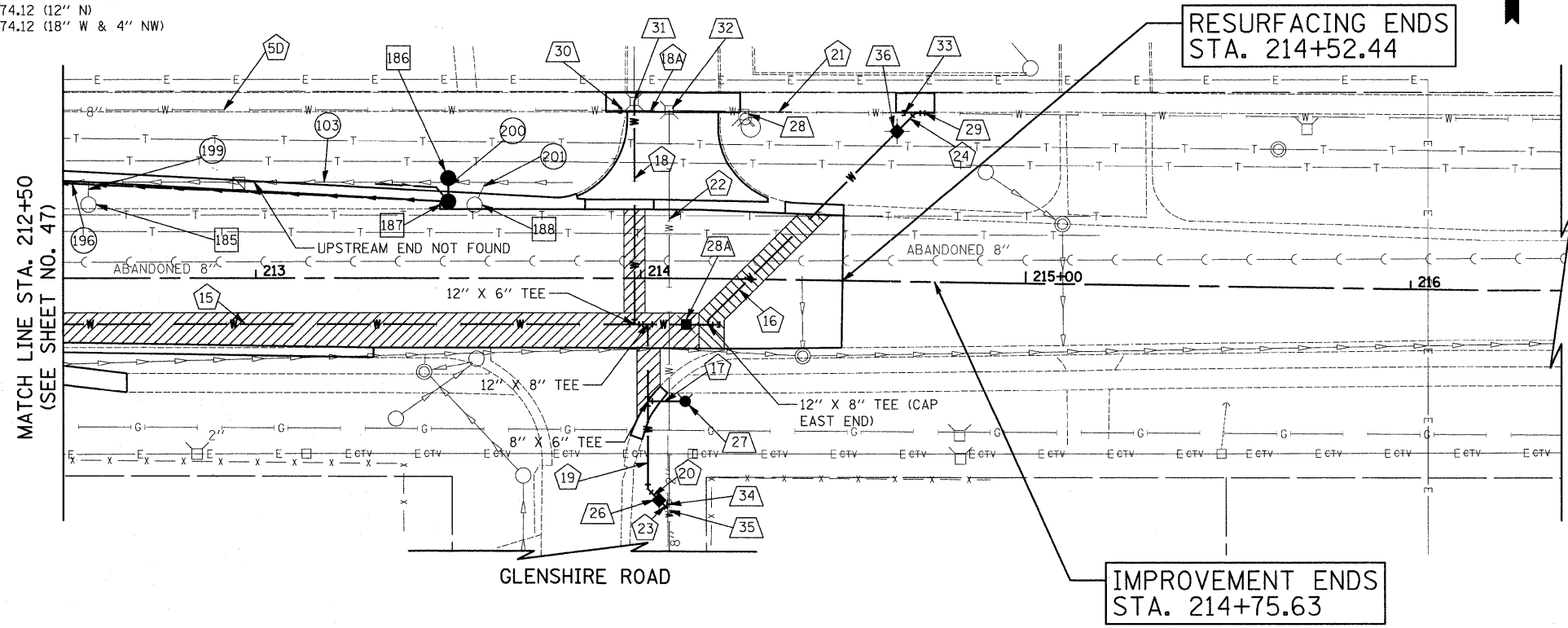
- 185 STA. 212+56.6, 19.1' LT
CB TO BE REMOVED
- 186 STA. 213+50.0, 26.0' LT
CB T-C
TYPE 8 GRATE
RIM = 677.30
INV = 674.13 (12" S)
- 187 STA. 213+50.0, 19.9' LT
CB T-A, 4' DIA.
TYPE 24 F & G
RIM = 677.71
INV = 674.12 (12" N)
INV = 674.12 (18" W & 4" NW)
- 188 STA. 213+56.8, 19.0' LT
CB TO BE REMOVED

- 103 SEE SHEET NO. 42
- 196 SEE SHEET NO. 47
- 199 5' - 12" S.S. REMOVAL
- 200 1' - 12" S.S., CL.A, T-1 @ 0.50%
T.B.F. = 0.1 CU. YD.
- 201 5' - 12" S.S. REMOVAL

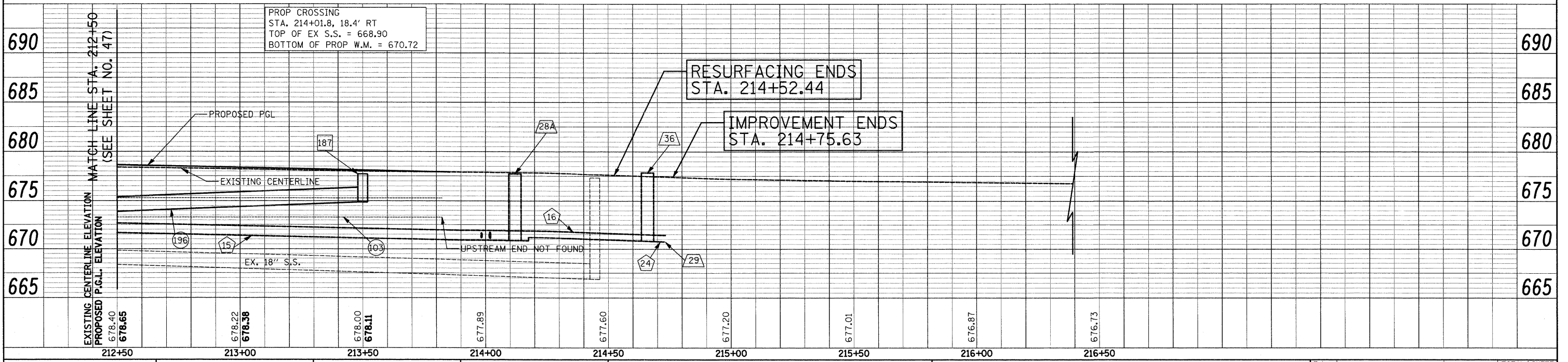
- 26 STA. 214+04.7, 57.7' RT
VALVE VAULT, TYPE A, 5' DIA.
TYPE 1 FR., C.L.
GATE VALVE 8"
RIM = 677.64
- 27 STA. 214+11.5, 32.0' RT
FH W/ AUX VALVE & VALVE BOX
- 28 STA. 214+26.6, 41.6' LT
FH TO BE REMOVED
- 28A STA. 214+12.0, 12.0' RT
VALVE VAULT, TYPE A, 5' DIA.
TYPE 1 FR., C.L.
12" GATE VALVE
RIM = 677.72
- 29 STA. 214+73.2, 43.8' LT
CONNECT TO EXISTING WATER MAIN 8"
- 30 STA. 213+95.0, 43.6' LT
CUT AND CAP EXISTING WATERMAIN
- 31 STA. 213+98.4, 45.9' LT
CONNECT TO EXISTING WATERMAIN 6" (EXISTING VALVE)
- 32 STA. 214+07.4, 43.7' LT
VALVE VAULT TO BE REMOVED
- 33 STA. 214+68.0, 43.8' LT
CUT AND CAP EXISTING WATERMAIN
- 34 STA. 214+07.3, 58.8' RT
CUT AND CAP EXISTING WATERMAIN
- 35 STA. 214+07.3, 60.3' RT
CONNECT TO EXISTING WATERMAIN 8"
- 50 SEE SHEET NO. 42
- 15 SEE SHEET NO. 47
- 16 71' - 8" DUCTILE IRON WATERMAIN
T.B.F. = 30.6 CU. YD.
- 17 10' - 6" DUCTILE IRON WATERMAIN
T.B.F. = 6.8 CU. YD.
- 18A 12' - WATERMAIN REMOVAL 8"
- 18 58' - 6" DUCTILE IRON WATERMAIN
T.B.F. = 39.5 CU. YD.
- 19 43' - 8" DUCTILE IRON WATERMAIN
T.B.F. = 21.8 CU. YD.
- 20 4' - 8" DUCTILE IRON WATERMAIN
T.B.F. = 0.0 CU. YD.
- 21 FILL EXISTING WATERMAIN, 8" (0.8 CU. YD.)
- 22 FILL EXISTING WATERMAIN, 8" (1.3 CU. YD.)
- 23 4' - 8" DUCTILE IRON WATERMAIN
T.B.F. = 0.0 CU. YD.
- 24 7' - 8" DUCTILE IRON WATERMAIN
T.B.F. = 3.4 CU. YD.

DATE	
BY	
PLAN	
REVISED	
NOTE BOOK	
NO.	
FILE NAME	

DATE	
BY	
PROFILE	
REVISED	
NOTE BOOK	
NO.	
FILE NAME	



NOTE:
1. ALL WATERMAIN BENDS SHOWN ARE 45° BENDS.
THE COST OF THE BENDS SHALL BE PAID FOR AS
"WATERMAIN FITTINGS".



FILE NAME = J:\2275\Cad\Sheet\2275_D&U_11.dgn	USER NAME = djk	DESIGNED - JAT	REVISED -	STATE OF ILLINOIS DEPARTMENT OF TRANSPORTATION	DRAINAGE AND UTILITIES	F.A. RTE. 2743	SECTION 05-00161-00-CH	COUNTY COOK	TOTAL SHEETS 112	SHEET NO. 48		
PLOT SCALE = 20.0000' / IN.	CHECKED - DJK	DATE - 03-19-10	REVISED -			SCALE: 1"=20'	SHEET NO. 11 OF 11 SHEETS	STA. 212+50	TO STA. 213+85.5	CONTRACT NO. 63383		
PLOT DATE = 3/19/2010						FED. ROAD DIST. NO. 1 ILLINOIS FED. AID PROJECT M-80031543						