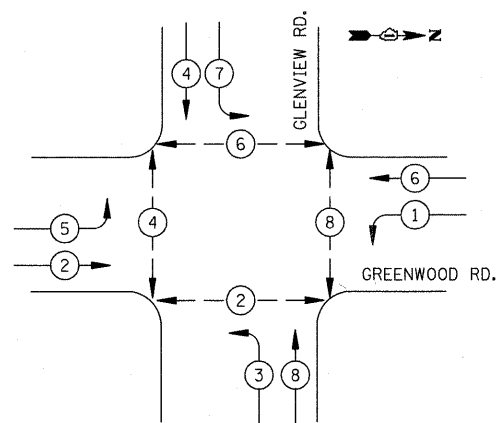
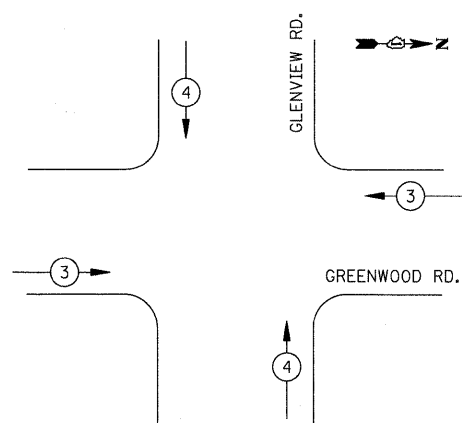




TEMPORARY CONTROLLER SEQUENCE



TEMPORARY EMERGENCY VEHICLE PREEMPTION SEQUENCE

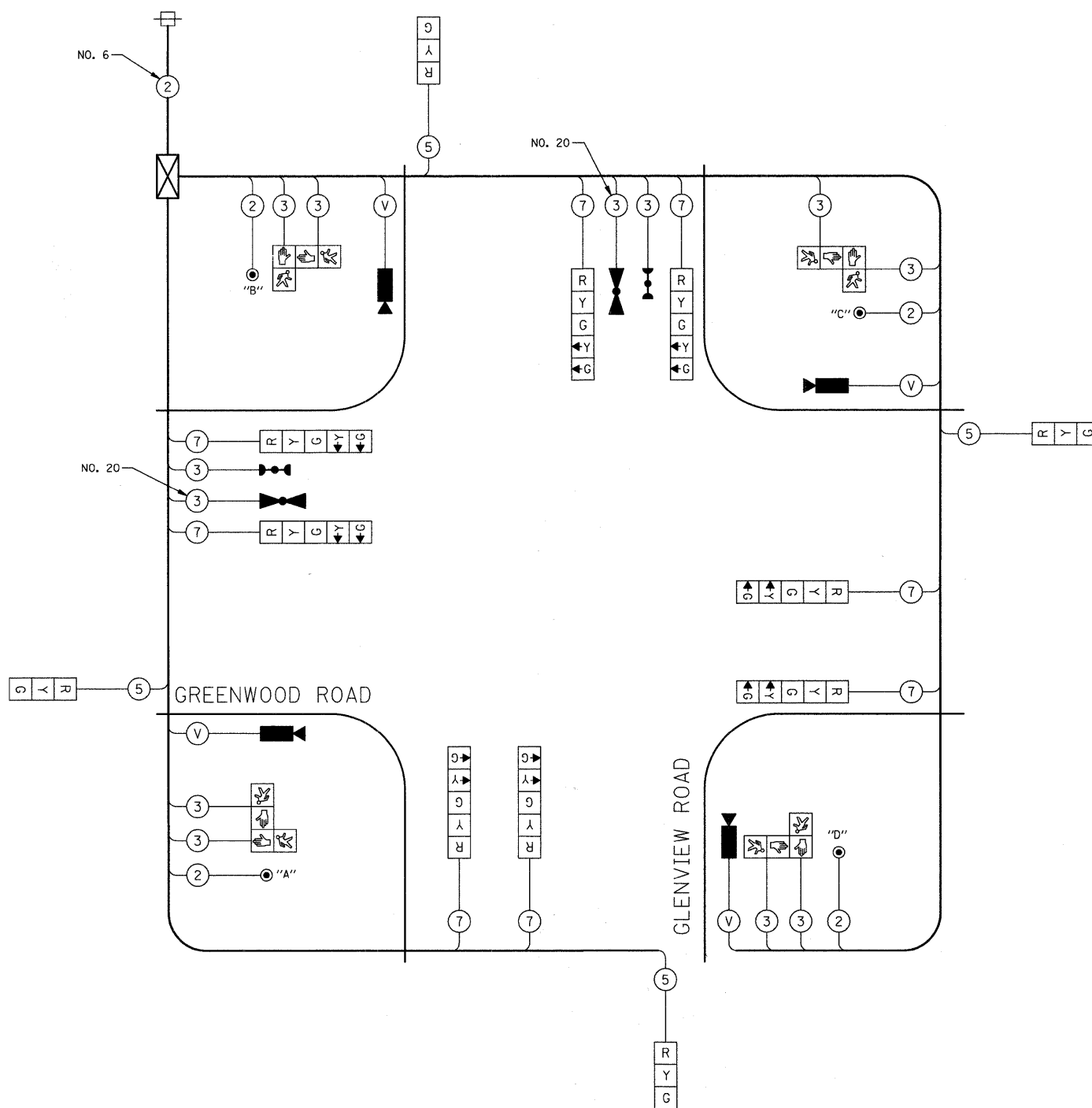


LEGEND

- DUAL ENTRY PHASE
- SINGLE ENTRY PHASE
- OVERLAP
- PEDESTRIAN PHASE
- NUMBER REFERS TO ASSOCIATED PHASE

| PROPOSED EMERGENCY VEHICLE PREEMPTORS |   |   |
|---------------------------------------|---|---|
| EMERGENCY VEHICLE PREEMPTOR           | 3 | 4 |
| MOVEMENT                              |   |   |

TEMPORARY PHASE DESIGNATION DIAGRAM



TEMPORARY CABLE PLAN  
NOT TO SCALE

NOTE:  
 PEDESTRIAN PUSH-BUTTON "A" SHALL PLACE A CALL TO PHASES 2 & 4  
 PEDESTRIAN PUSH-BUTTON "B" SHALL PLACE A CALL TO PHASES 4 & 6  
 PEDESTRIAN PUSH-BUTTON "C" SHALL PLACE A CALL TO PHASES 6 & 8  
 PEDESTRIAN PUSH-BUTTON "D" SHALL PLACE A CALL TO PHASES 8 & 2

| I.D.O.T.<br>TRAFFIC SIGNAL INSTALLATION<br>ELECTRICAL SERVICE REQUIREMENTS |           |         |     |             | TOTAL<br>WATTAGE |
|--|-----------|---------|-----|-------------|------------------|
| TYPE   | NO. LAMPS | WATTAGE |     | % OPERATION |                  |
| SIGNAL (RED)   | 12        | INCAND. | 17  | 0.50        | 102              |
| (YELLOW)   | 12        |         | 25  | 0.25        | 75               |
| (GREEN)  | 12        |         | 15  | 0.25        | 45               |
| ARROW  | 16        |         | 12  | 0.10        | 19               |
| PED. SIGNAL  | 8         |         | 25  | 1.00        | 200              |
| CONTROLLER   | 1         |         | 100 | 1.00        | 100              |
| FLASHER  |           |         |     |             | 0.50             |
| TOTAL =  |           |         |     |             | 541              |

ENERGY COSTS TO: ILLINOIS DEPARTMENT OF TRANSPORTATION  
 201 WEST CENTER COURT  
 SCHAUMBURG, IL 60196-1096  
 ENERGY SUPPLY: CONTACT: MAUREEN RAYE  
 PHONE: (847) 816-5492  
 COMPANY: COM ED

|  |                        |
|--|------------------------|
| FILE NAME = J:\2275\Cad\Sheet\Signals\2275_Temp_Cable_Plan.dgn | USER NAME = djc        |
| PLOT SCALE = 50.0000' / IN.                                    | PLOT DATE = 11/23/2009 |

|                 |           |
|-----------------|-----------|
| DESIGNED - BRD  | REVISOR - |
| DRAWN - JRT     | REVISOR - |
| CHECKED - JJE   | REVISOR - |
| DATE - 11/23/09 | REVISOR - |

STATE OF ILLINOIS  
DEPARTMENT OF TRANSPORTATION

TEMPORARY CABLE PLAN, TEMPORARY PHASE DESIGNATION DIAGRAM  
& TEMPORARY EMERGENCY VEHICLE PREEMPTION SEQUENCE  
GREENWOOD ROAD AT GLENVIEW ROAD

SCALE: NO SCALE SHEET NO. 1 OF 1 SHEETS STA. TO STA.

|   |                        |             |                  |              |
|---|------------------------|-------------|------------------|--------------|
| F.A.U. RTE. 2743  | SECTION 05-00161-00-CH | COUNTY COOK | TOTAL SHEETS 112 | SHEET NO. 60 |
| CONTRACT NO. 63383  |                        |             |                  |              |
| FED. ROAD DIST. NO. 1 ILLINOIS FED. AID PROJECT M-8003(543) |                        |             |                  |              |