

F.A.U. RTE.	SECTION	COUNTY	TOTAL SHEETS	SHEET NO.
1248	04-00136-06-CH	COOK	107	1
ILLINOIS		CONTRACT NO. 63415		

STATE OF ILLINOIS
DEPARTMENT OF TRANSPORTATION

DIVISION OF HIGHWAYS

**PROPOSED
HIGHWAY PLANS**

**FAU ROUTE 1248 (EVERETT RD.)
COUNTY HIGHWAY 52 (RIVERWOODS RD.) FAU 2698
SECTION 04-00136-06-CH
PROJECT CMM-9003 (153)
ROUNDBOUT CONSTRUCTION, ROADWAY
RECONSTRUCTION AND RESURFACING**

PROJECT IS LOCATED IN
THE VILLAGES OF METTAWA
AND LINCOLNSHIRE
LAKE COUNTY
C-91-169-09
RANGE 11 EAST

TRAFFIC DATA
RIVERWOODS ROAD
2008 ADT: 10,800
SPEED LIMIT: 40 MPH SOUTH, 45 MPH NORTH
DESIGN SPEED: 45 MPH SOUTH, 50 MPH NORTH

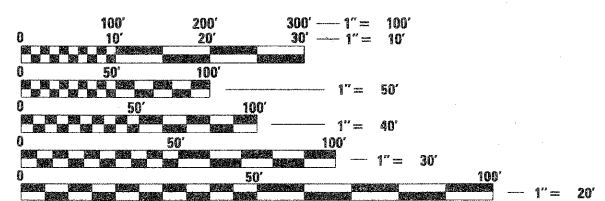
EVERETT ROAD
2008 ADT: 6,750
SPEED LIMIT: 45 MPH
DESIGN SPEED: 50 MPH

INDEX OF SHEETS

SHEET No.	DESCRIPTION
1	COVER SHEET
2 - 3	GENERAL NOTES, STANDARDS, POINTS OF CONTACT
4 - 5	SUMMARY OF QUANTITIES
6 - 18	QUANTITY SCHEDULES
19	ALIGNMENT AND TIES
20 - 21	RIGHT-OF-WAY
22 - 27	TYPICAL SECTIONS
28 - 30	EROSION CONTROL AND GRADING (STAGES 1 - 4)
31 - 48	TRAFFIC CONTROL PLAN
49 - 56	PLAN AND PROFILE SHEETS
57	ROUNDBOUT DETAIL SHEET
58 - 61	PAVEMENT MARKING/LANDSCAPING
62	IRRIGATION PLAN
63 - 72	LIGHTING
73 - 90	CROSS SECTIONS
91 - 107	CONSTRUCTION DETAILS

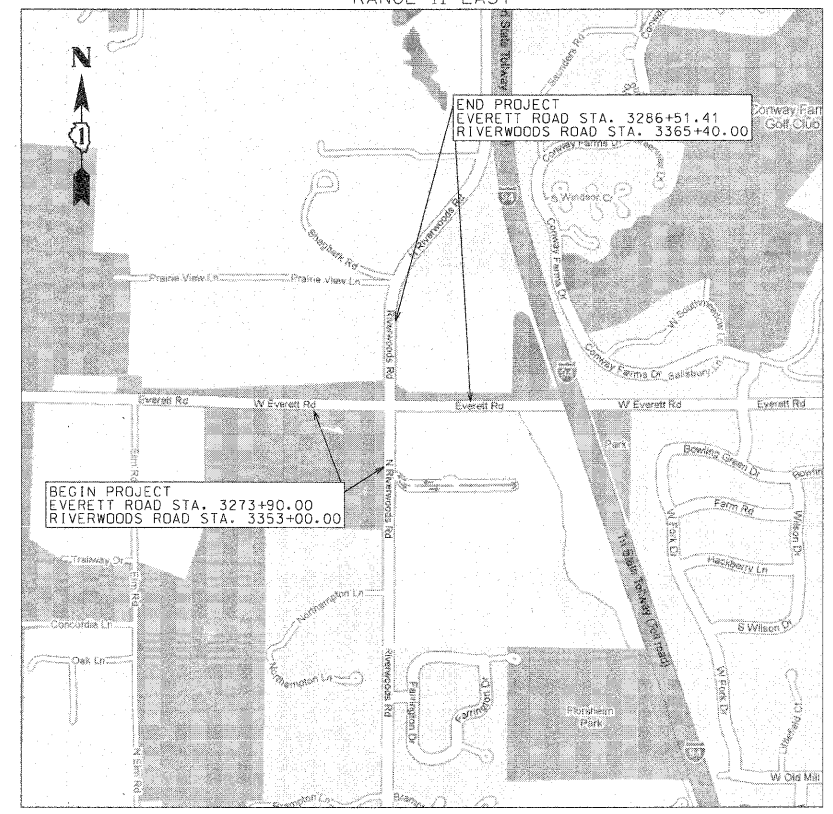
DESIGN DESIGNATION:

RIVERWOODS ROAD	2241	(30)	MINOR ARTERIAL	0.81	(FD-20)
EVERETT ROAD	1401	(30)	MINOR ARTERIAL	0.24	(FD-20)



FULL SIZE PLANS HAVE BEEN PREPARED USING STANDARD ENGINEERING SCALES. REDUCED SIZED PLANS WILL NOT CONFORM TO STANDARD SCALES. IN MAKING MEASUREMENTS ON REDUCED PLANS, THE ABOVE SCALES MAY BE USED.

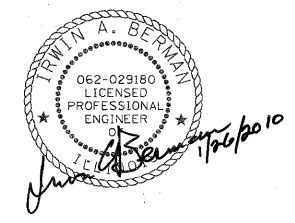
J.U.L.I.E.
JOINT UTILITY LOCATION INFORMATION FOR EXCAVATION
1-800-892-0123
OR 811



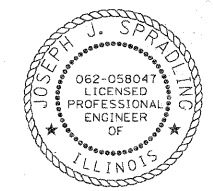
NOT TO SCALE
LOCATION MAP
GROSS AND NET LENGTH OF PROJECT = 2501.41 FT. = 0.474 MI.



LOCATION OF SECTION INDICATED THUS: - [shaded rectangle] -



LICENSE EXP: 11/30/2011
SHEETS: 63-72



LICENSE EXP: 11/30/2011
SHEETS: 1-62, 73-107

STATE OF ILLINOIS
DEPARTMENT OF TRANSPORTATION
DIVISION OF HIGHWAYS

APPROVED JANUARY 28 2010
Mark J. Binkler
LAKE COUNTY DIVISION OF TRANSPORTATION -
COUNTY ENGINEER

PASSED FEBRUARY 4 2010
Joseph J. Spradling
DISTRICT 1 ENGINEER OF LOCAL ROADS AND STREETS

RELEASING FOR BID FEBRUARY 4, 2010
BASED ON LIMITED REVIEW
Diane M. O'Keefe
DEPUTY DIRECTOR OF HIGHWAYS,
REGION 1 ENGINEER

**PRINTED BY THE AUTHORITY
OF THE STATE OF ILLINOIS**

FIELD ENGINEER: ALEX HOUSEH (847) 705-4410
DESIGNER: JOE SPRADLING (312) 443-4910

CONTRACT NO. 63415

HDR
HDR Engineering, Inc.
30 N LaSalle Street, Suite 3220
Chicago, IL 60602
312-443-4900