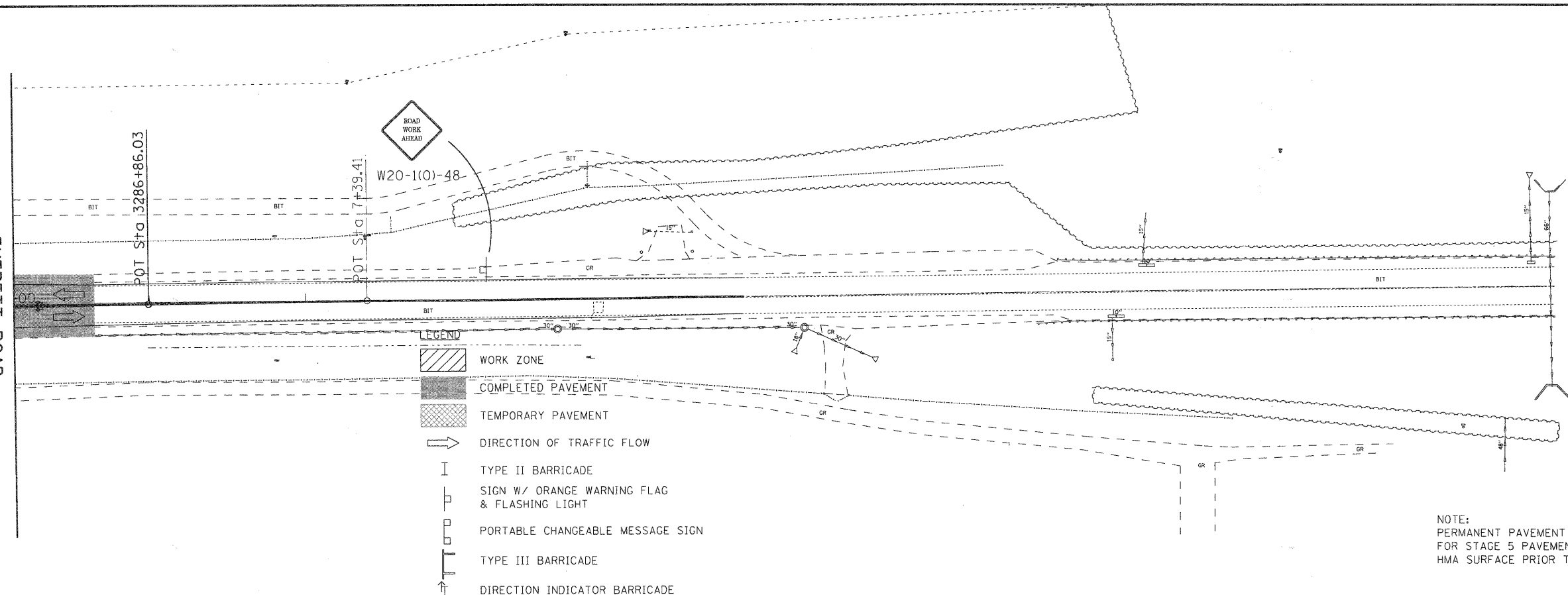


EVERETT ROAD
MATCH LINE STA. 3274+00

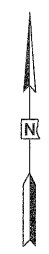
- LEGEND**
- WORK ZONE
 - COMPLETED PAVEMENT
 - TEMPORARY PAVEMENT
 - DIRECTION OF TRAFFIC FLOW
 - TYPE II BARRICADE
 - SIGN W/ ORANGE WARNING FLAG & FLASHING LIGHT
 - PORTABLE CHANGEABLE MESSAGE SIGN
 - TYPE III BARRICADE
 - DIRECTION INDICATOR BARRICADE

EVERETT ROAD
MATCH LINE STA. 3286+00

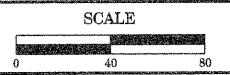


- LEGEND**
- WORK ZONE
 - COMPLETED PAVEMENT
 - TEMPORARY PAVEMENT
 - DIRECTION OF TRAFFIC FLOW
 - TYPE II BARRICADE
 - SIGN W/ ORANGE WARNING FLAG & FLASHING LIGHT
 - PORTABLE CHANGEABLE MESSAGE SIGN
 - TYPE III BARRICADE
 - DIRECTION INDICATOR BARRICADE

NOTE:
PERMANENT PAVEMENT STRIPING AND SIGNING SHALL BE UTILIZED FOR STAGE 5 PAVEMENT MARKINGS. CONTRACTOR SHALL PLACE HMA SURFACE PRIOR TO STARTING WORK ON STAGE 5.



REVISIONS / REMARKS					
NO.	DESCRIPTION	DATE	BY	DESIGNED BY:	JRM
				CHECKED BY:	MPK/JLC
				DATE:	1/22/2010



EVERETT ROAD - STAGE 5
TRAFFIC CONTROL PLAN

ROUTE	SECTION	SECTION NUMBER	SHEET	SHEETS
58/52	136	04-00136-06-CH	47	107

63415