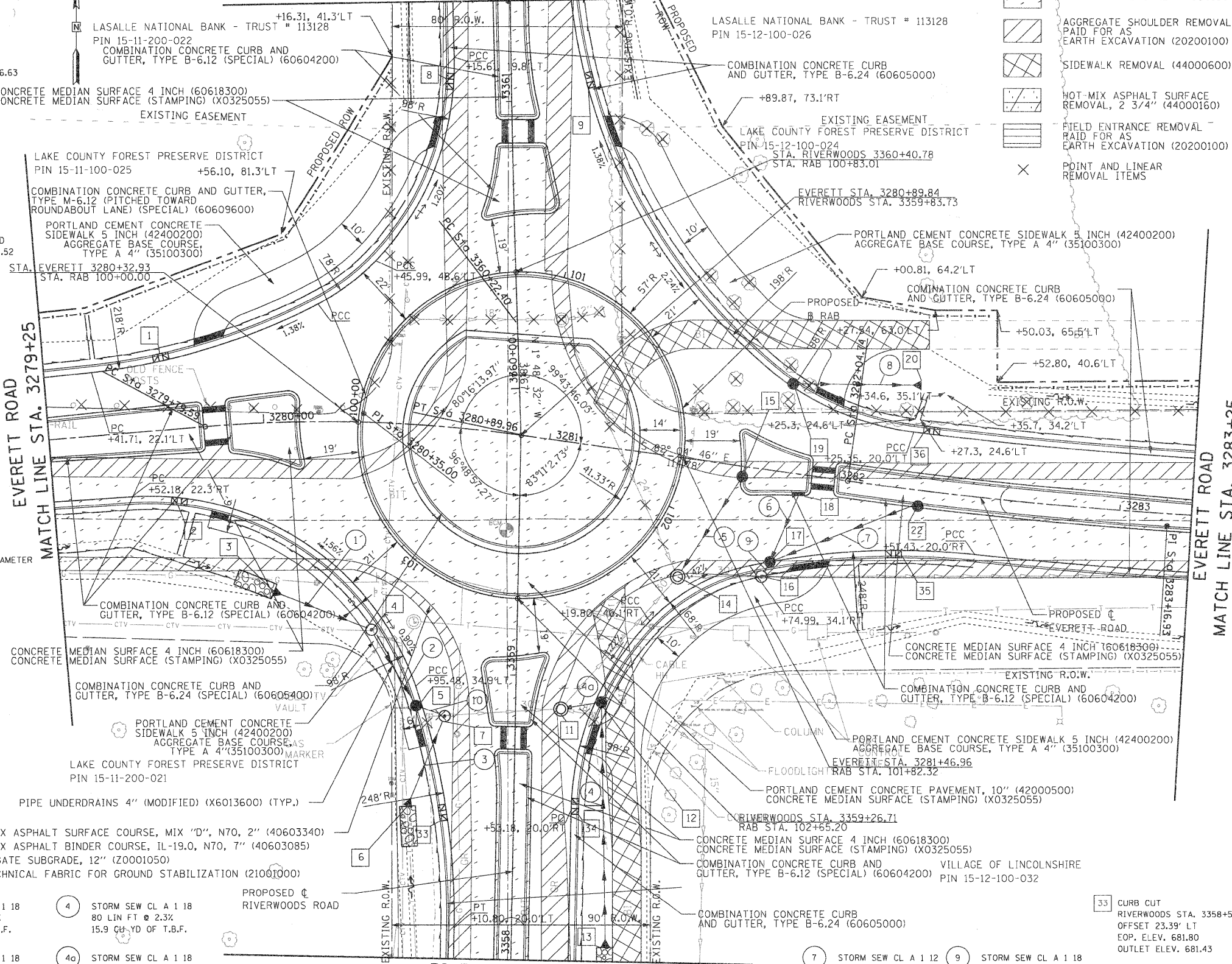


RIVERWOODS ROAD
MATCH LINE STA. 3361+25

STONE RIPRAP, CLASS A3 (28100105)
FILTER FABRIC (28200200)

- REMOVAL LEGEND**
- PAVEMENT REMOVAL (44000100)
 - AGGREGATE SHOULDER REMOVAL PAID FOR AS EARTH EXCAVATION (20200100)
 - SIDEWALK REMOVAL (44000600)
 - HOT-MIX ASPHALT SURFACE REMOVAL, 2 3/4" (44000160)
 - FIELD ENTRANCE REMOVAL PAID FOR AS EARTH EXCAVATION (20200100)
 - POINT AND LINEAR REMOVAL ITEMS

- 1 CURB CUT
EVERETT STA. 3279+66.29
OFFSET 23.98' LT
EOP ELEV. 681.14
OUTLET ELEV. 680.77
- 2 CURB CUT
EVERETT STA. 3279+68.69
OFFSET 24.04' RT
EOP ELEV. 681.13
OUTLET ELEV. 680.76
- 3 PRECAST REINFORCED CONCRETE FLARED END SECTION 18" EVERETT STA. 3280+01.40
OFFSET 59.01' RT
FLOWLINE 679.18
- 4 MANHOLE, TYPE A, 4'-DIAMETER TYPE 1 FRAME, CLOSED LID RIVERWOODS STA. 3359+14.89
OFFSET 50.67' LT
RIM 682.80
INV. 678.50 (W,S)
- 5 CATCH BASINS, TYPE A, 5'-DIAMETER TYPE 24 FRAME AND GRATE [FLAT TOP SLAB] RIVERWOODS STA. 3358+89.36
OFFSET 33.32' LT
RIM 682.02
INV. 677.40 (N)
INV. 677.40 (E)
- 5 CATCH BASINS TO BE RECONSTRUCTED (REMOVE CONNECTION WITH PIPE TP3 AND CONNECT PIPE 2 IN STAGE 4)
- 6 PRECAST REINFORCED CONCRETE FLARED END SECTION 18" RIVERWOODS STA. 3358+53.47
OFFSET 37.00' LT
FLOWLINE 679.45
- 7 MANHOLES, TYPE A, 5'-DIAMETER TYPE 1 FRAME, CLOSED LID [FLAT TOP SLAB] RIVERWOODS STA. 3358+85.23
OFFSET 24.63' LT
RIM 682.10
INV. 677.30 (N)
INV. 677.40 (S)
INV. 677.28 (E; EXIST.)
- 7 MANHOLES TO BE RECONSTRUCTED (REMOVE CONNECTION WITH PIPE TP4 IN STAGE 4)
- 8 CURB CUT
RIVERWOODS STA. 3361+07.27
OFFSET 20.08' LT
EOP ELEV. 681.81
OUTLET ELEV. 681.44
- 9 CURB CUT
RIVERWOODS STA. 3361+06.63
OFFSET 26.06' RT
EOP ELEV. 681.85
OUTLET ELEV. 681.48
- 11 MANHOLES TO BE ADJUSTED RIVERWOODS STA. 3358+88.52
OFFSET 15.79' RT
RIM 682.30
INV. 677.60 (E)
INV. 677.10 (W; EXIST.)
INV. 676.90 (NE; EXIST.)
- 12 CATCH BASINS, TYPE A, 5'-DIAMETER TYPE 24 FRAME AND GRATE [FLAT TOP SLAB] RIVERWOODS STA. 3358+92.01
OFFSET 28.02' RT
RIM 682.35
INV. 677.80 (S,W)
- 13 PRECAST REINFORCED CONCRETE FLARED END SECTION 18" RIVERWOODS STA. 3358+05.00
OFFSET 32.80' RT
FLOWLINE 679.65
- 14 MANHOLES TO BE ADJUSTED ROUNDABOUT STA. 102+16.39
OFFSET 16.55' LT
RIM 682.62
INV. 678.70 (NE; PROP.)
INV. 676.67 (SW; EXIST.)
INV. 676.64 (E; EXIST.)
- 15 CATCH BASINS, TYPE C, TYPE 11 FRAME AND GRATE ROUNDABOUT STA. 101+85.00
OFFSET 20.78' LT
RIM 682.10
INV. 679.10 (S)
- 16 MANHOLE, TYPE A, 5'-DIAMETER TYPE 1 FRAME, CLOSED LID [FLAT TOP SLAB] EVERETT STA. 3281+79.56
OFFSET 37.28' RT
RIM 682.15
INV. 677.10 (NE)
INV. 676.45 (E,W; EXIST.)
- 17 CATCH BASINS, TYPE A, 4'-DIAMETER TYPE 24 FRAME AND GRATE EVERETT STA. 3281+81.78
OFFSET 31.72' RT
RIM 681.91
INV. 677.65 (N)
INV. 677.65 (NE)
INV. 677.15 (SW)
ECCENTRIC OPENING IN TOP ROTATED AWAY FROM EVERETT CENTERLINE
- 18 INLETS, TYPE A, TYPE 11 FRAME AND GRATE EVERETT STA. 3281+88.66
OFFSET 7.36' RT
RIM 681.82
INV. 678.80 (S)
- 19 CATCH BASINS, TYPE C, TYPE 24 FRAME AND GRATE EVERETT STA. 3281+80.76
OFFSET 30.05' LT
RIM 681.60
INV. 679.24
- 20 PRECAST REINFORCED CONCRETE FLARED END SECTION 12" EVERETT STA. 3282+26.00
OFFSET 36.50' LT
FLOWLINE 679.05
- 22 CATCH BASINS, TYPE C, TYPE 11 FRAME AND GRATE EVERETT STA. 3282+30.00
OFFSET 6.00' RT
RIM 681.55
INV. 678.55
- 23 CURB CUT
RIVERWOODS STA. 3358+51.66
OFFSET 23.39' LT
EOP ELEV. 681.80
OUTLET ELEV. 681.43
- 24 CATCH BASINS, TYPE C, TYPE 11 FRAME AND GRATE EVERETT STA. 3282+31.62
OFFSET 20.00' LT
EOP ELEV. 681.08
OUTLET ELEV. 680.71
- 25 CURB CUT
EVERETT STA. 3282+23.59
OFFSET 21.88' RT
EOP ELEV. 681.66
OUTLET ELEV. 681.29
- 26 CURB CUT
EVERETT STA. 3282+31.62
OFFSET 20.00' LT
EOP ELEV. 681.08
OUTLET ELEV. 680.71
- 27 CURB CUT
RIVERWOODS STA. 3358+54.52
OFFSET 20.03' RT
EOP ELEV. 681.87
OUTLET ELEV. 681.50
- 28 CURB CUT
EVERETT STA. 3282+31.62
OFFSET 20.00' LT
EOP ELEV. 681.08
OUTLET ELEV. 680.71



RIVERWOODS ROAD
MATCH LINE STA. 3358+00

- 1 STORM SEW CL A 1 18
28 LIN FT @ 2.0%
4.7 CU YD OF T.B.F.
- 2 STORM SEW CL A 1 18
28 LIN FT @ 3.9%
7.8 CU YD OF T.B.F.
- 3 STORM SEW CL A 1 18
28 LIN FT @ 7.3%
3.5 CU YD OF T.B.F.
- 4 STORM SEW CL A 1 18
80 LIN FT @ 2.3%
15.9 CU YD OF T.B.F.
- 4a STORM SEW CL A 1 18
10 LIN FT @ 1.8%
2.2 CU YD OF T.B.F.
- 5 STORM SEW CL A 1 12
40 LIN FT @ 1.0%
4.2 CU YD OF T.B.F.
- 6 STORM SEW CL A 1 12
24 LIN FT @ 1.0%
3.0 CU YD OF T.B.F.
- 7 STORM SEW CL A 1 12
56 LIN FT @ 3.4%
1.0 CU YD OF T.B.F.
- 8 STORM SEW CL A 1 12
38 LIN FT @ 0.5%
3.4 CU YD OF T.B.F.
- 9 STORM SEW CL A 1 18
4 LIN FT @ 1.2%
1.0 CU YD OF T.B.F.
- 10 STORM SEW CL A 1 18
8 LIN FT @ 1.0%
5.9 CU YD OF T.B.F.
- 33 CURB CUT
RIVERWOODS STA. 3358+51.66
OFFSET 23.39' LT
EOP ELEV. 681.80
OUTLET ELEV. 681.43
- 34 CURB CUT
RIVERWOODS STA. 3358+54.52
OFFSET 20.03' RT
EOP ELEV. 681.87
OUTLET ELEV. 681.50
- 35 CURB CUT
EVERETT STA. 3282+23.59
OFFSET 21.88' RT
EOP ELEV. 681.66
OUTLET ELEV. 681.29
- 36 CURB CUT
EVERETT STA. 3282+31.62
OFFSET 20.00' LT
EOP ELEV. 681.08
OUTLET ELEV. 680.71

REVISIONS / REMARKS					SCALE		H&R		Lake County		ROUTE / SECTION		SECTION NUMBER		SHEET SHEETS	
NO.	DESCRIPTION	DATE	BY	DESIGNED BY:	SCALE	30 N LaSalle St., Suite 3220	Chicago, IL 60662	Division of Transportation	CH	136	04-00136-06-CH	55	107			

FILE NAME:

03415