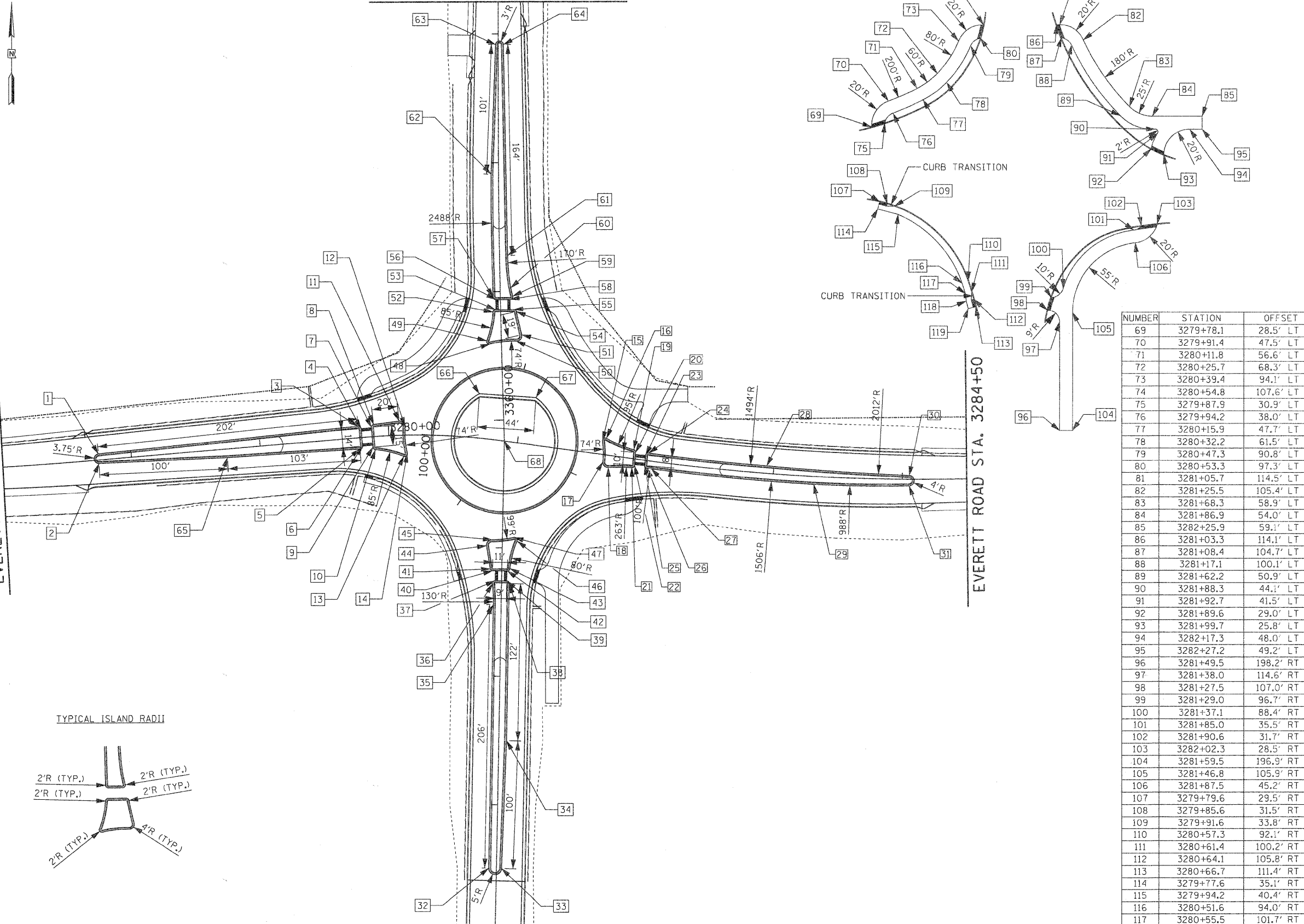


RIVERWOODS ROAD STA. 3363+25

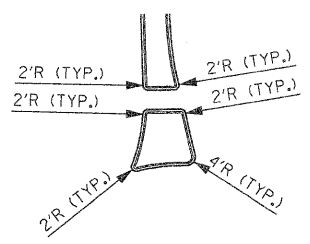
EVERETT ROAD STA. 3277+00

EVERETT ROAD STA. 3284+50

RIVERWOODS ROAD STA. 3356+00



TYPICAL ISLAND RADII

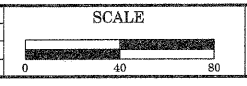


NUMBER	STATION	OFFSET
69	3279+78.1	28.5' LT
70	3279+91.4	47.5' LT
71	3280+11.8	56.6' LT
72	3280+25.7	68.3' LT
73	3280+39.4	94.1' LT
74	3280+54.8	107.6' LT
75	3279+87.9	30.9' LT
76	3279+94.2	38.0' LT
77	3280+15.9	47.7' LT
78	3280+32.2	61.5' LT
79	3280+47.3	90.8' LT
80	3280+53.3	97.3' LT
81	3281+05.7	114.5' LT
82	3281+25.5	105.4' LT
83	3281+68.3	58.9' LT
84	3281+86.9	54.0' LT
85	3282+25.9	59.1' LT
86	3281+03.3	114.1' LT
87	3281+08.4	104.7' LT
88	3281+17.1	100.1' LT
89	3281+62.2	50.9' LT
90	3281+88.3	44.1' LT
91	3281+92.7	41.5' LT
92	3281+89.6	29.0' LT
93	3281+99.7	25.8' LT
94	3282+17.3	48.0' LT
95	3282+27.2	49.2' LT
96	3281+49.5	198.2' RT
97	3281+38.0	114.6' RT
98	3281+27.5	107.0' RT
99	3281+29.0	96.7' RT
100	3281+37.1	88.4' RT
101	3281+85.0	35.5' RT
102	3281+90.6	31.7' RT
103	3282+02.3	28.5' RT
104	3281+59.5	196.9' RT
105	3281+46.8	105.9' RT
106	3281+87.5	45.2' RT
107	3279+79.6	29.5' RT
108	3279+85.6	31.5' RT
109	3279+91.6	33.8' RT
110	3280+57.3	92.1' RT
111	3280+61.4	100.2' RT
112	3280+64.1	105.8' RT
113	3280+66.7	111.4' RT
114	3279+77.6	35.1' RT
115	3279+94.2	40.4' RT
116	3280+51.6	94.0' RT
117	3280+55.5	101.7' RT
118	3280+56.9	107.7' RT
119	3280+59.4	113.4' RT

NUMBER	STATION	OFFSET	ELEVATION (EOP)
1	3277+74.6	4.7' LT	683.26
2	3277+74.6	2.7' RT	683.26
3	3279+77.0	8.8' LT	681.44
4	3279+79.1	6.8' LT	681.45
5	3279+77.0	8.8' RT	681.44
6	3279+79.1	6.8' RT	681.45
7	3279+87.0	7.2' LT	681.49
8	3279+88.8	9.3' LT	681.51
9	3279+87.2	8.2' RT	681.49
10	3279+88.9	10.1' RT	681.52
11	3280+08.3	10.9' LT	681.77
12	3280+12.7	6.6' LT	681.79
13	3280+11.3	16.4' RT	681.94
14	3280+14.1	14.2' RT	681.98
15	3281+65.2	10.6' LT	682.14
16	3281+67.9	12.9' LT	682.18
17	3281+67.8	5.8' RT	682.10
18	3281+72.4	9.5' RT	682.08
19	3281+90.1	7.0' LT	681.80
20	3281+91.8	5.1' LT	681.78
21	3281+90.6	7.2' RT	681.79
22	3281+92.4	5.1' RT	681.75
23	3281+99.9	3.9' LT	681.69
24	3282+01.9	6.0' LT	681.67
25	3282+00.4	4.2' RT	681.68
26	3282+02.4	6.1' RT	681.64
27	3282+05.7	6.0' RT	681.64
28	3282+94.4	6.0' LT	681.68
29	3283+31.8	6.0' RT	681.65
30	3284+05.4	2.9' LT	681.30
31	3284+05.4	5.1' RT	681.30
32	3356+50.0	6.0' LT	683.48
33	3356+49.9	4.0' RT	683.48
34	3357+50.0	6.0' RT	682.99
35	3358+55.5	6.0' LT	682.15
36	3358+71.8	7.0' LT	682.21
37	3358+74.0	5.0' LT	682.24
38	3358+72.0	6.0' RT	682.22
39	3358+74.0	4.0' RT	682.23
40	3358+82.0	7.1' LT	682.31
41	3358+83.3	9.0' LT	682.34
42	3358+82.0	4.3' RT	682.31
43	3358+83.9	6.3' RT	682.33
44	3359+01.5	12.2' LT	682.59
45	3359+06.1	7.8' LT	682.68
46	3359+05.6	11.3' RT	682.68
47	3359+08.2	9.0' RT	682.80
48	3360+59.1	9.0' LT	682.73
49	3360+61.8	11.3' LT	682.72
50	3360+60.9	11.3' RT	682.98
51	3360+65.7	15.8' RT	682.65
52	3360+84.0	5.9' LT	682.28
53	3360+85.8	3.9' LT	682.25
54	3360+84.0	12.1' RT	682.28
55	3360+85.6	10.2' RT	682.25
56	3360+93.8	3.6' LT	682.15
57	3360+95.8	5.5' LT	682.14
58	3360+93.6	7.6' RT	682.15
59	3360+96.0	9.6' RT	682.14
60	3361+02.6	8.2' RT	682.12
61	3361+27.9	6.3' RT	682.02
62	3361+91.1	5.8' LT	681.79
63	3362+91.8	2.0' LT	681.42
64	3362+91.8	4.0' RT	681.42
65	3278+74.0	6.7' RT	682.32
66	3360+20.8	18.2' LT	683.75
67	3360+16.3	25.5' RT	684.94
68	EVE 3280+89.84=RIV 3359+83.73	0'	

NOTE: ALL SIDEWALK STATIONS AND OFFSETS REFER TO ϕ EVERETT ROAD

NO.	REVISIONS / REMARKS	DATE	BY	DESIGNED BY:	JRM
	DESCRIPTION	/ /		MPK/JLC	
		/ /		DATE: 1/22/2010	



HDR 38 N LaSalle Street, Suite 3220
Chicago, IL 60602
312-443-4900
HDR Engineering, Inc.

LakeCounty
Division of Transportation

ROUNDABOUT
DETAILS

ROUTE	SECTION	SECTION NUMBER	SHEET	SHEETS
CH	136	04-00136-06-CH	57	107

FILE NAME:

03415