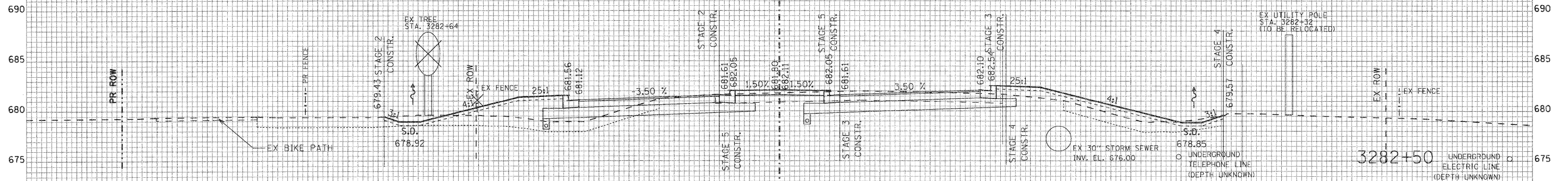
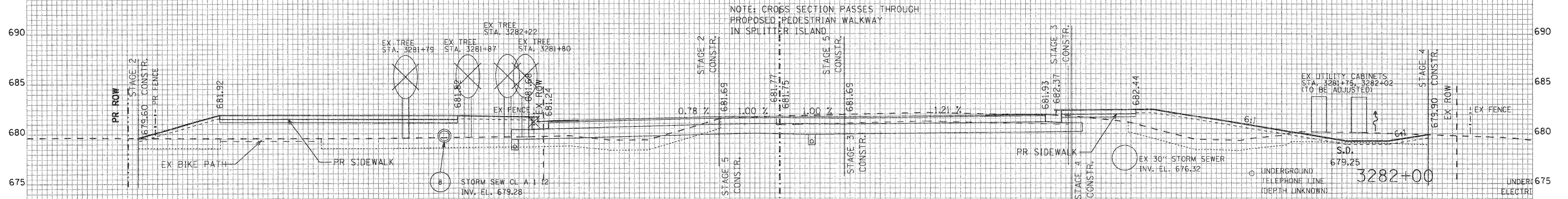


75 70 65 60 55 50 45 40 35 30 25 20 15 10 5 0 5 10 15 20 25 30 35 40 45 50 55 60 65 70 75



STAGE 2	STAGE 3	STAGE 4	STAGE 5	ALL STAGES
CUT = 10.7 SQ FT	CUT = 14.0 SQ FT	CUT = 1.2 SQ FT	CUT = 7.5 SQ FT	RD UNSUIT = 43.3 SQ FT
FILL = 31.4 SQ FT	FILL = 0.8 SQ FT	FILL = 21.2 SQ FT	FILL = 6.1 SQ FT	TSFP 4 IN. = 13.5 SQ FT



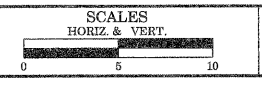
STAGE 2	STAGE 3	STAGE 4	STAGE 5	ALL STAGES
CUT = 0.8 SQ FT	CUT = 23.6 SQ FT	CUT = 2.4 SQ FT	CUT = 16.3 SQ FT	RD UNSUIT = 77.8 SQ FT
FILL = 103.5 SQ FT	FILL = 0.0 SQ FT	FILL = 41.2 SQ FT	FILL = 0.0 SQ FT	TSFP 4 IN. = 14.9 SQ FT

NOTE:
CUT AND FILL LABELS ARE FOR PROPOSED IMPROVEMENTS ONLY. EARTH EXCAVATION AND FURNISHED EXCAVATION QUANTITIES HAVE BEEN INCLUDED IN THE QUANTITY SCHEDULES FOR PLACEMENT AND REMOVAL OF TEMP PAVEMENT EARTHWORK IN STAGE 1.

NOTE: CROSS SECTION PASSES THROUGH PROPOSED PEDESTRIAN WALKWAY IN SPLITTER ISLAND

LEGEND: --- EXIST. GROUND BOTTOM OF TOPSOIL STRIPPING

REVISIONS / REMARKS		DATE	BY	DESIGNED BY:	JRM
NO.	DESCRIPTION	/ /		CHECKED BY:	MPK/JLC
		/ /		DATE:	1/22/2010



HDR
30 N LaSalle Street, Suite 3220
Chicago, IL 60602
312-443-4900
HDR Engineering, Inc.



EVERETT ROAD
CROSS SECTION STA. 3282+00 TO STA. 3282+50

ROUTE	SECTION	SECTION NUMBER	SHEET	SHEETS
CH	136	04-00136-06-CH	78	107

FILE NAME: #FILES

03415