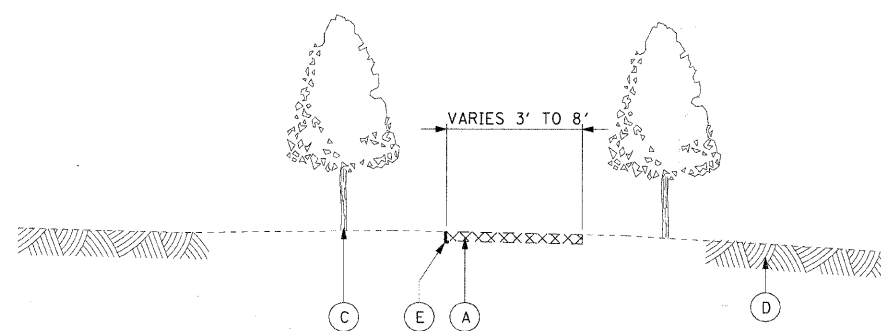
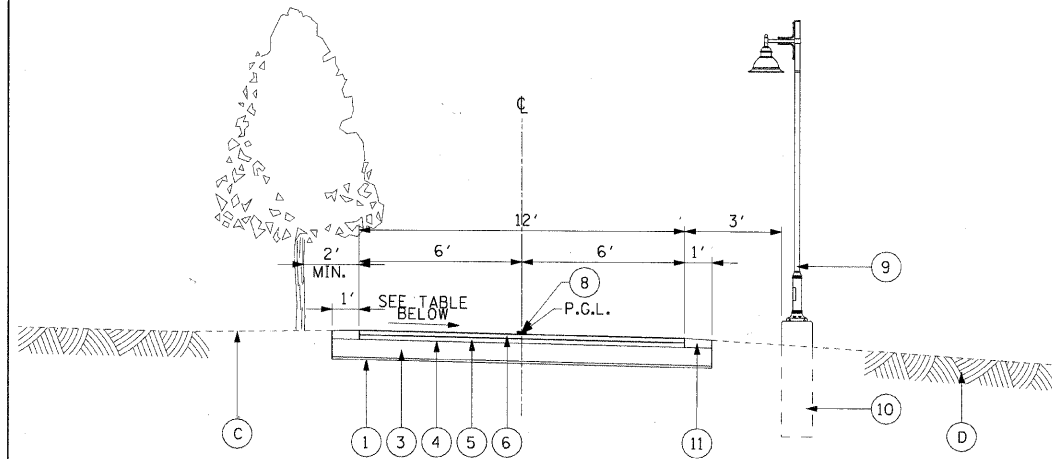


EXISTING HOT-MIX ASPHALT PATH

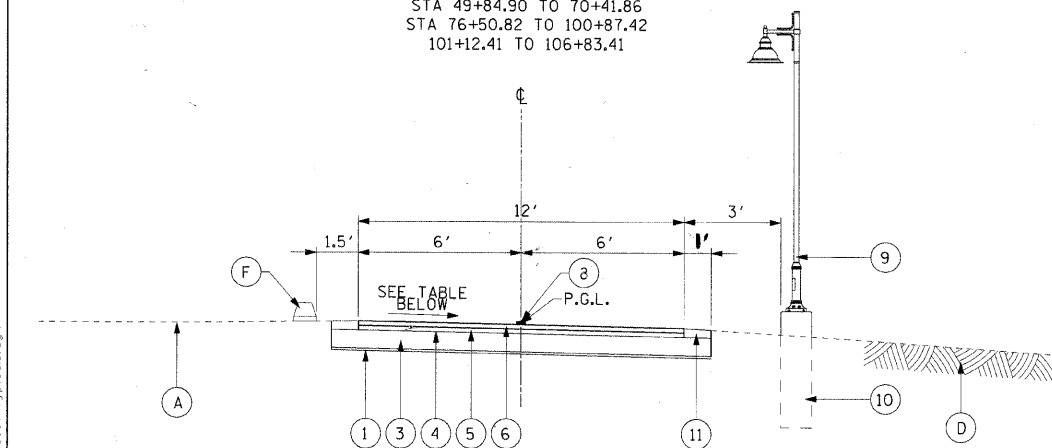


EXISTING AGGREGATE PATH



PROPOSED BICYCLE / SHARED-USE PATH

STA 49+84.90 TO 70+41.86
STA 76+50.82 TO 100+87.42
101+12.41 TO 106+83.41



PROPOSED BICYCLE / SHARED-USE PATH

STA 71+14.37 TO 76+50.82

HOT-MIX ASPHALT MIXTURE REQUIREMENTS

ITEM	VOIDS
HOT-MIX ASPHALT BINDER COURSE, IL-19.0, N50, 2 1/4"	4% @ 50 GYR.
HOT-MIX ASPHALT SURFACE COURSE, MIX "C", N50 (IL 9.5mm), 1 1/2"	4% @ 50 GYR.
HOT MIX ASPHALT SURFACE COURSE, MIX "D", N70 (HAND METHOD) (IL 9.5mm), 1 1/2"	4% @ 70 GYR.

THE WEIGHT USED TO CALCULATE ALL HMA MIXTURE QUANTITIES IS 112 LBS/SY/IN THE "AC TYPE" FOR POLYMERIZED HMA MIXES SHALL BE "SBS/SBR PG 70-22" AND FOR NON-POLYMERIZED HMA THE "AC TYPE" SHALL BE "PG 64-22" UNLESS MODIFIED BY DISTRICT ONE SPECIAL PROVISIONS.
FOR "PERCENT OF RAP" SEE DISTRICT ONE SPECIAL PROVISIONS.



USER NAME = czonykab	DESIGNED - BMC	REVISED -
PLOT SCALE =	DRAWN - LM	REVISED -
PLOT DATE = 12/01/2009	CHECKED - SLW	REVISED -
	DATE - 12/01/2009	REVISED -

STATE OF ILLINOIS
DEPARTMENT OF TRANSPORTATION

TYPICAL SECTIONS

SCALE: NONE SHEET NO. OF SHEETS STA. TO STA.

EXISTING CONDITIONS AND REMOVALS

- (A) AGGREGATE - THICKNESS VARIES
- (B) HOT-MIX ASPHALT PAVEMENT - THICKNESS VARIES
- (C) EXISTING TREE
- (D) EXISTING GROUND
- (E) EXISTING PLASTIC, METAL, OR BRICK PATH EDGING
- (F) EXISTING CONCRETE PARKING BUMPER
- ☒ REMOVAL ITEMS

PROPOSED IMPROVEMENTS

- (1) GEOTECHNICAL FABRIC FOR GROUND STABILIZATION
- (2) AGGREGATE BASE COURSE, TYPE B - 6"
- (3) AGGREGATE BASE COURSE, TYPE B - 8"
- (4) BITUMINOUS MATERIALS (PRIME COAT)
- (5) HOT-MIX ASPHALT BINDER COURSE, IL-19.0, N50 - 2 1/4"
- (6) HOT-MIX ASPHALT SURFACE COURSE, MIX "C", N50 - 1 1/2"
- (7) CRUSHED NATURAL STONE PATH SURFACE, 4"
- (8) THERMOPLASTIC PAVEMENT MARKING - LINE 4" (YELLOW)
- (9) ORNAMENTAL LIGHTING UNIT (SEE ELECTRICAL DRAWINGS)
- (10) LIGHT POLE FOUNDATION, 24" DIA. (SEE ELECTRICAL DRAWINGS)
- (11) TOPSOIL FURNISH AND PLACE, 4"

NOTES

1. FOR ALL PATH REMOVALS THAT DO NOT COINCIDE WITH PROPOSED PATH LOCATIONS, THE PARK LANDSCAPE MUST BE RESTORED WITH TOPSOIL AND SEEDING. EXISTING AGGREGATE PATH AND EDGING TO REMAIN SHALL BE PROTECTED WHEN ADJACENT TO EXISTING BITUMINOUS PATH REMOVAL. SEE PROPOSED IMPROVEMENTS PLAN FOR APPROXIMATE LIMITS.
2. REMOVAL OF EXISTING SURFACE AND BURIED PATH EDGING AND BRICK LINING MATERIALS IS INCIDENTAL TO THE REMOVAL OF AGGREGATE PATHS AND WILL BE PAID FOR AS EARTH EXCAVATION.
3. PROPOSED ORNAMENTAL LIGHTING UNITS WILL BE INSTALLED ON EITHER SIDE OF THE BICYCLE/SHARED-USE PATH. SEE ELECTRICAL DRAWINGS FOR POLE LOCATIONS.
4. EXISTING TREES AND PLANT MATERIAL NOT CALLED FOR REMOVAL MUST BE PROTECTED AS INDICATED IN THE PLANS AND PER REQUIREMENTS OF SECTION 201 OF THE IDOT STANDARD SPECIFICATION. ROOT PRUNING MUST BE PERFORMED ON ALL TREES WITH ROOT ZONES WITHIN THE EXCAVATION AREA PRIOR TO DIGGING.
5. HOT MIX ASPHALT SURFACE COURSE, MIX "D", N70 (HAND METHOD) (IL-9.5mm) WILL BE USED FOR ANY RESTORATION OF EXISTING PAVEMENT NECESSARY FOR THE CONSTRUCTION OF ADA CURB RAMPS. SEE CIVIL DRAWINGS FOR DETAILS.
6. PEDESTRIAN PATH CROSS SLOPE MUST BE BETWEEN 0.4% AND 2.0% AND FOLLOW EXISTING TOPOGRAPHY. IF MINIMUM SLOPE OF 0.4% CANNOT BE ACHIEVED, THE PATH SHOULD BE CROWNED AT THE CENTER.
7. BICYCLE AND SHARED-USE PATH SLOPE SHALL BE A MAXIMUM OF 2.0% UNLESS WITHIN AN AREA OF SUPERELEVATION TRANSITION. REFERENCE THE ADJACENT PROPOSED CROSS-SLOPES TABLE FOR MORE INFORMATION.
8. THE PARK LANDSCAPE ADJACENT TO PROPOSED PATHS SHALL BE RESTORED WITH TOPSOIL AND SEEDING AT A CROSS SLOPE OF 1:10 PREFERRED, 1:6 MAXIMUM UNLESS OTHERWISE IDENTIFIED IN THE PLANS OR AS DIRECTED BY THE ENGINEER.

PROPOSED CROSS-SLOPES

STATION TO STATION	X-SLOPE	TRANS. (•)
50+00.00 TO 50+74.38	-2.00%	
50+74.38 TO 50+89.38		*
50+89.38 TO 67+35.00	+2.00%	
67+35.00 TO 67+50.00		*
67+50.00 TO 70+25.00	-2.00%	
70+25.00 TO 70+41.86		*
70+41.86	0.00%	
71+00.00 TO 106+83.41	+2.00%	

- MAXIMUM CROSS SLOPES ARE INDICATED IN THIS TABLE. CROSS SLOPES MAY BE CONSTRUCTED AT A MINIMUM OF 0.5% OR A MAXIMUM OF 2.0% TO FIT EXISTING TOPOGRAPHY AND AS DIRECTED BY THE ENGINEER.

- PATH SECTIONS WITH POSITIVE CROSS-SLOPES SLOPE FROM WEST (HIGH) TO EAST (LOW).

C-91-338-07

F.A. RTE.	SECTION	COUNTY	TOTAL SHEETS	SHEET NO.
	07-00246-00-BT	COOK	81	8
ITP NO. 102121		CONTRACT NO. 63423		
FED. ROAD DIST. NO.		ILLINOIS FED. AID PROJECT		

12/01/2009 \\user\j1f1207\p00099576\p00099576_900.cad\900.dwg\ings\sheet\008_09131807-typicals.dgn