

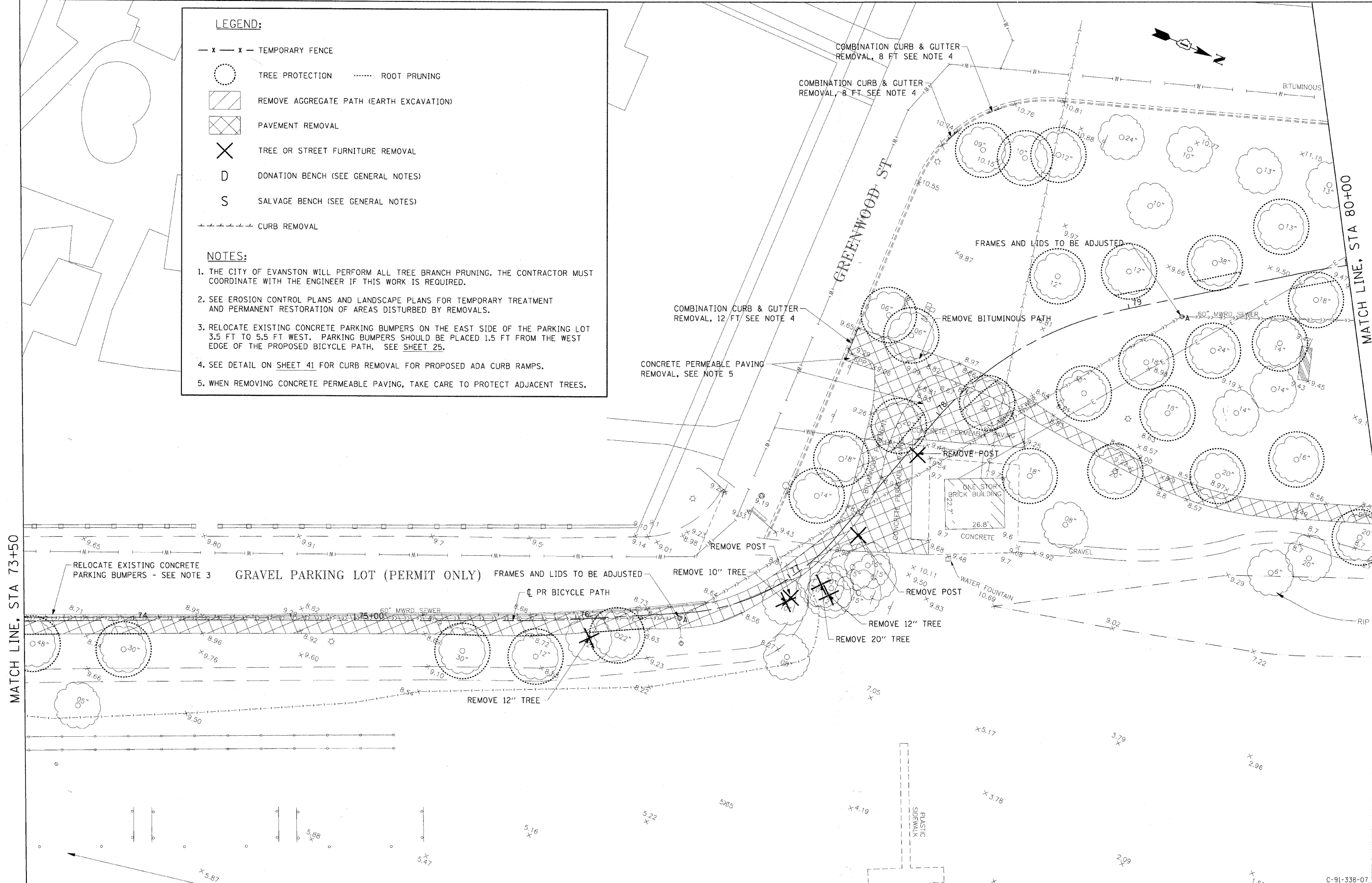
12/01/2009 \\suecnyj1207\p60099576\p60099576\900_cad\1391_drawing\p60099576_sht-r-rem_05.dgn

LEGEND:

- x - x - TEMPORARY FENCE
- TREE PROTECTION ROOT PRUNING
- ▨ REMOVE AGGREGATE PATH (EARTH EXCAVATION)
- ▩ PAVEMENT REMOVAL
- ✕ TREE OR STREET FURNITURE REMOVAL
- D DONATION BENCH (SEE GENERAL NOTES)
- S SALVAGE BENCH (SEE GENERAL NOTES)
- CURB REMOVAL

NOTES:

1. THE CITY OF EVANSTON WILL PERFORM ALL TREE BRANCH PRUNING. THE CONTRACTOR MUST COORDINATE WITH THE ENGINEER IF THIS WORK IS REQUIRED.
2. SEE EROSION CONTROL PLANS AND LANDSCAPE PLANS FOR TEMPORARY TREATMENT AND PERMANENT RESTORATION OF AREAS DISTURBED BY REMOVALS.
3. RELOCATE EXISTING CONCRETE PARKING BUMPERS ON THE EAST SIDE OF THE PARKING LOT 3.5 FT TO 5.5 FT WEST. PARKING BUMPERS SHOULD BE PLACED 1.5 FT FROM THE WEST EDGE OF THE PROPOSED BICYCLE PATH. SEE SHEET 25.
4. SEE DETAIL ON SHEET 41 FOR CURB REMOVAL FOR PROPOSED ADA CURB RAMPS.
5. WHEN REMOVING CONCRETE PERMEABLE PAVING, TAKE CARE TO PROTECT ADJACENT TREES.



MATCH LINE, STA 73+50

MATCH LINE, STA 80+00



USER NAME = ozosnykat	DESIGNED - BMC	REVISED -
PLOT SCALE =	DRAWN - LM	REVISED -
PLOT DATE = 12/01/2009	CHECKED - SLW	REVISED -
	DATE - 12/01/2009	REVISED -

**STATE OF ILLINOIS
DEPARTMENT OF TRANSPORTATION**

REMOVAL PLAN
SCALE: 1"=20' SHEET NO. OF SHEETS STA. 73+50 TO STA. 80+00

F.A. RTE.	SECTION	COUNTY	TOTAL SHEETS	SHEET NO.
	07-00246-00-BT	COOK	81	15
ITEP NO. 102121		CONTRACT NO. 63423		
FED. ROAD DIST. NO. ILLINOIS FED. AID PROJECT				

C-91-338-07