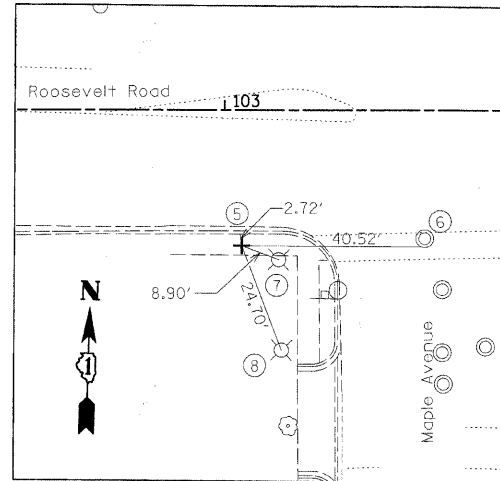


CONTROL POINT #219
STA 100+23.39, 82.17' LT

CONTROL POINT #219 IS A "X" CUT IN CURBLINE ON THE N.E. CORNER OF HARLEM AVE. AND ROOSEVELT RD.

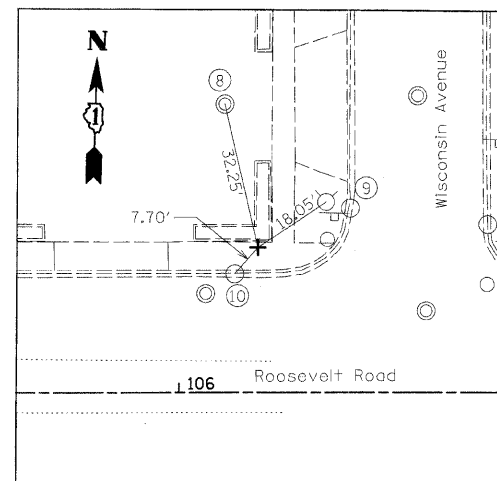
1. FLOWLINE OF INLET
2. CENTER OF TOP OF SPINDLE ON FIRE HYDRANT
3. CENTER OF TRAFFIC SIGNAL BASE
4. CENTER POINT OF MANHOLE



CONTROL POINT #218
STA 103+03.81, 30.21' RT

CONTROL POINT #218 IS A "X" CUT IN WALK ON S.W. CORNER OF ROOSEVELT RD. AND MAPLE AVE.

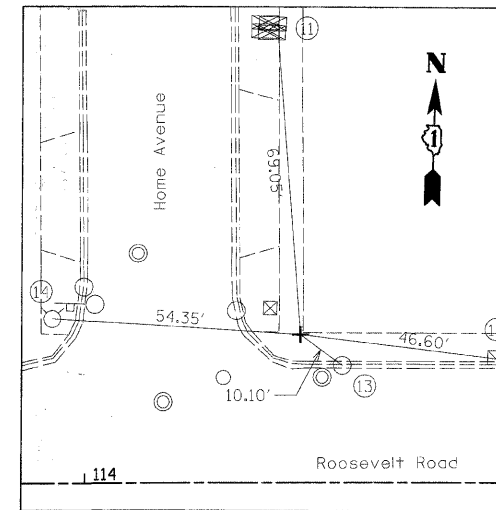
5. BACK OF CURB
6. CENTER OF TELEPHONE MANHOLE
7. CENTER POINT OF LIGHT POLE BASE
8. CENTER POINT OF LIGHT POLE BASE



CONTROL POINT #217
STA 106+18.38, 31.47' LT

CONTROL POINT #217 IS A "X" CUT IN WALK ON N.E. CORNER OF ROOSEVELT RD. AND WISCONSIN AVE.

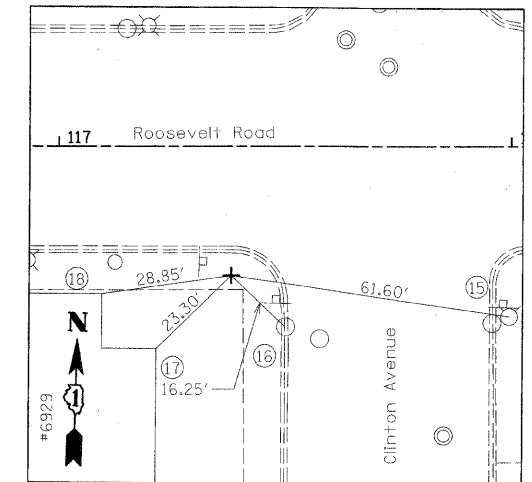
8. CENTER POINT OF CATCH BASIN
9. CENTER OF TOP OF SPINDLE ON FIRE HYDRANT
10. FLOWLINE OF CATCH BASIN



CONTROL POINT #216
STA 114+47.58, 30.79' LT

CONTROL POINT #216 IS A "X" CUT IN WALK ON N.E. CORNER OF ROOSEVELT RD. AND HOME AVE.

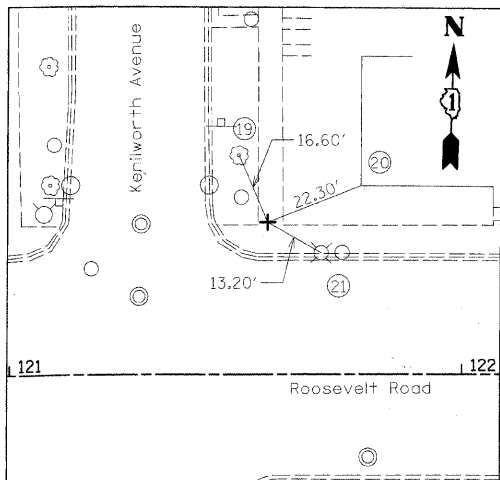
11. SOUTHEAST CORNER OF CONTROL BOX
12. CENTER POINT OF LIGHT POLE
13. FLOWLINE OF CATCH BASIN
14. CENTER OF TOP OF SPINDLE ON FIRE HYDRANT



CONTROL POINT #215
STA 117+37.54, 28.74' RT

CONTROL POINT #215 IS A "X" CUT IN WALK ON S.W. CORNER OF ROOSEVELT RD. AND CLINTON AVE.

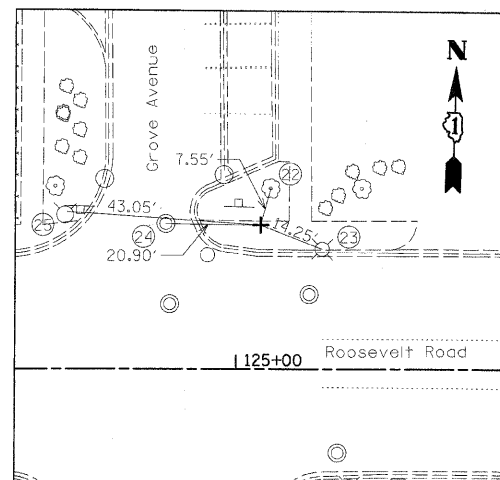
15. CENTER OF TOP OF SPINDLE ON FIRE HYDRANT
16. FLOWLINE OF CATCH BASIN
17. BASE OF BUILDING AT CORNER
18. BASE OF BUILDING AT CORNER



CONTROL POINT #214
STA 121+57.09, 33.62' LT

CONTROL POINT #214 IS A "X" CUT IN WALK ON N.E. CORNER OF ROOSEVELT RD. AND KENILWORTH AVE.

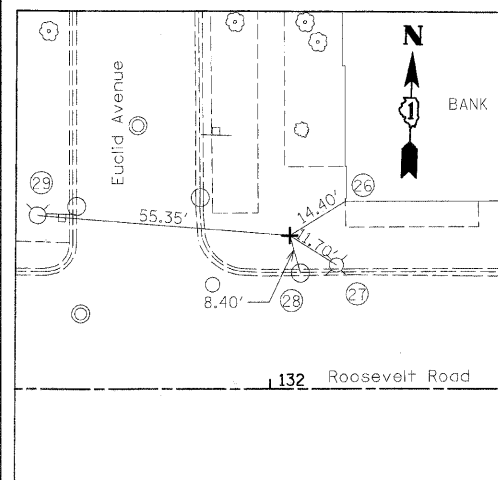
19. TREE WITH PK
20. BASE OF BUILDING AT CORNER
21. CENTER POINT OF LIGHT POLE



CONTROL POINT #213
STA 125+05.55, 31.87' LT

CONTROL POINT #213 IS A "X" CUT IN WALK ON N.E. CORNER OF ROOSEVELT RD. AND GROVE AVE.

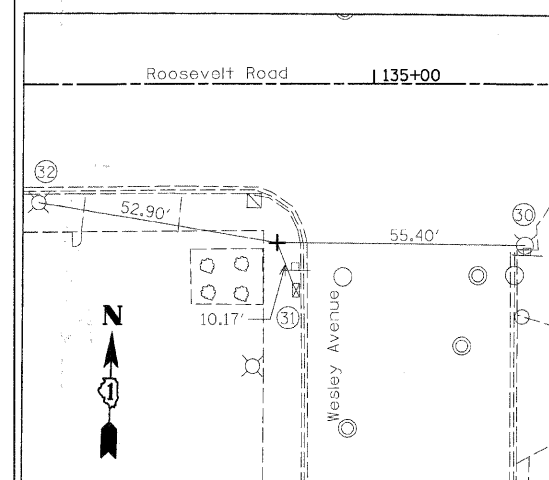
22. TREE WITH PK
23. CENTER POINT OF LIGHT POLE
24. CENTER POINT ON MANHOLE
25. CENTER OF TOP OF SPINDLE ON FIRE HYDRANT



CONTROL POINT #211
STA 132+04.37, 33.88' LT

CONTROL POINT #211 IS A "X" CUT IN WALK ON N.E. CORNER OF ROOSEVELT RD. AND EUCLID AVE.

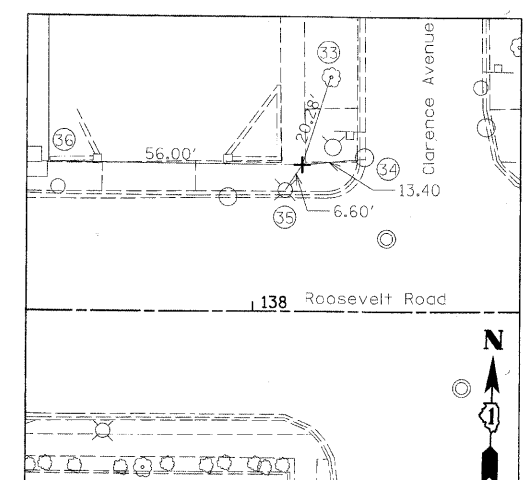
26. BASE OF BUILDING AT CORNER
27. CENTER OF LIGHT POLE
28. FLOWLINE OF CATCH BASIN
29. CENTER OF TOP OF SPINDLE OF FIRE HYDRANT



CONTROL POINT #210
STA 134+78.22, 35.00' RT

CONTROL POINT #210 IS A "X" CUT IN WALK ON S.W. CORNER OF ROOSEVELT RD. AND WESLEY AVE.

30. CENTER OF TOP OF SPINDLE ON FIRE HYDRANT
31. NORTHWEST CORNER OF CONTROL BOX
32. CENTER OF LIGHT POLE



CONTROL POINT #209
STA 138+11.34, 32.19' LT

CONTROL POINT #209 IS A "X" CUT IN WALK ON N.W. CORNER OF ROOSEVELT RD. AND CLARENCE AVE.

33. TREE WITH PK
34. FLOWLINE OF CATCH BASIN
35. CENTER OF LIGHT POLE
36. BASE OF BUILDING AT CORNER

FILE NAME = DIRTE38 sht-ATB26.dgn

USER NAME = IDOT

PLOT SCALE = 20,0000' / IN.
PLOT DATE = 3/11/2010

DESIGNED - BL
DRAWN - BM
CHECKED - JB
DATE

REVISED -
REVISED -
REVISED -
REVISED -

**STATE OF ILLINOIS
DEPARTMENT OF TRANSPORTATION**

**ALIGNMENT, TIES, BENCHMARKS,
AND CONTROL POINTS**

SCALE: 1" = 20' SHEET NO. OF SHEETS STA. TO STA.

F.A.P. RTE.	SECTION	COUNTY	TOTAL SHEETS	SHEET NO.
347	09-00248-00-RS	COOK	274	19
				CONTRACT NO. 63432
ILLINOIS FED. AID PROJECT				