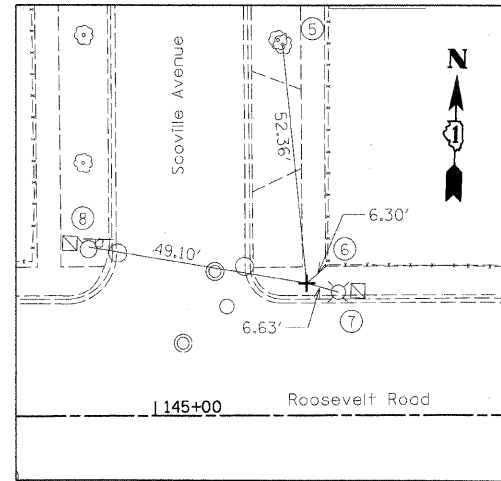


**CONTROL POINT #208**

STA 142+08.80, 32.57' RT

CONTROL POINT #208 IS A "X" CUT IN WALK ON S.E. CORNER OF ROOSEVELT RD. AND EAST AVE.

1. CENTER OF TOP OF SPINDLE OF FIRE HYDRANT
2. CENTER OF TRAFFIC SIGNAL BASE
3. SOUTHEAST CORNER OF CONTROL BOX
4. CENTER OF TOP OF SPINDLE OF FIRE HYDRANT

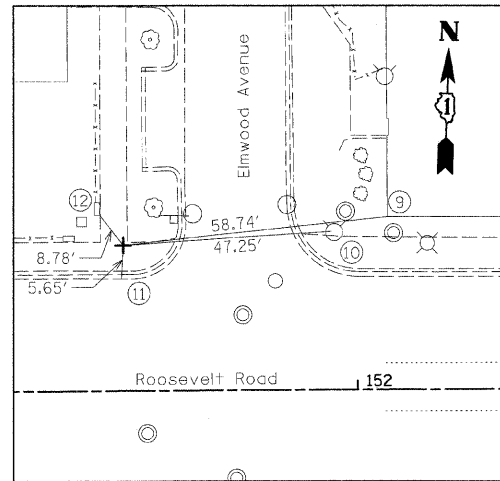


**CONTROL POINT #207**

STA 145+33.59, 29.07' LT

CONTROL POINT #207 IS A "X" CUT IN WALK ON N.E. CORNER OF ROOSEVELT RD. AND SCOVILLE AVE.

5. TREE WITH PK
6. BASE OF FENCE AT CORNER POST
7. SOUTHEAST CORNER OF CONTROL BOX
8. CENTER OF TOP OF SPINDLE OF FIRE HYDRANT

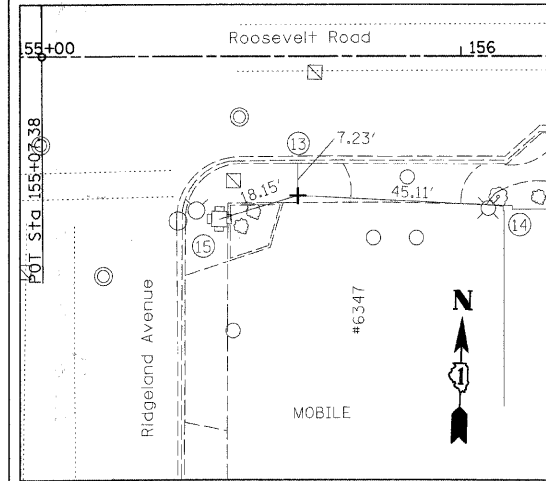


**CONTROL POINT #205**

STA 151+48.27, 32.02' LT

CONTROL POINT #205 IS A "X" CUT IN WALK ON N.W. CORNER OF ROOSEVELT RD. AND ELMWOOD AVE.

9. BASE OF BUILDING AT CORNER
10. CENTER OF TOP OF SPINDLE OF FIRE HYDRANT
11. BACK OF CURB
12. SOUTHEAST CORNER OF BRICK PILLAR

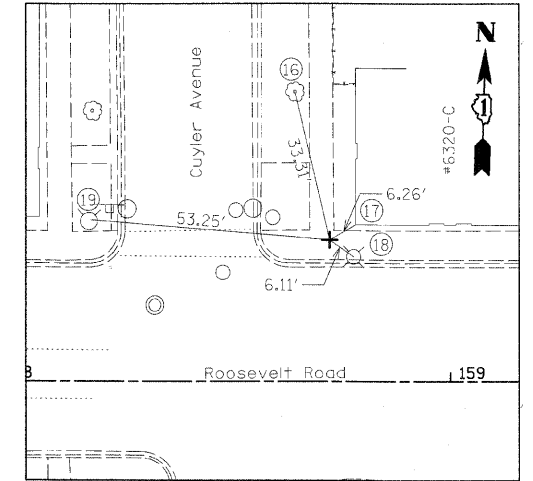


**CONTROL POINT #204**

STA 155+63.98,30.93' RT

CONTROL POINT #204 IS A "X" CUT IN WALK ON S.E. CORNER OF ROOSEVELT RD. AND RIDGELAND AVE.

13. BACK OF CURB
14. BASE OF BUILDING AT CORNER
15. CENTER OF TRAFFIC SIGNAL BASE

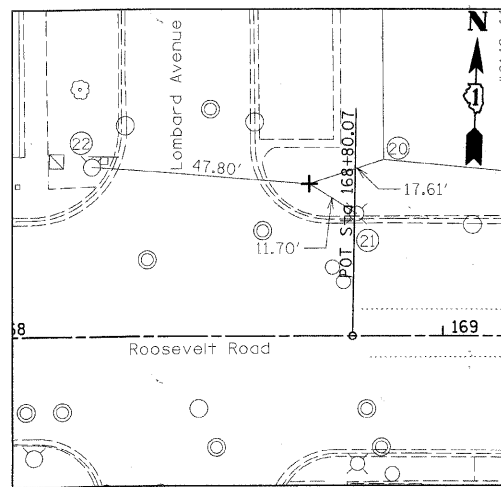


**CONTROL POINT #203**

STA 158+73.40,30.98' LT

CONTROL POINT #203 IS A "X" CUT IN WALK ON S.E. CORNER OF ROOSEVELT RD. AND CUYLER AVE.

16. TREE WITH PK
17. BASE OF BUILDING AT CORNER
18. CENTER OF LIGHT POLE
19. CENTER OF TOP OF SPINDLE OF FIRE HYDRANT

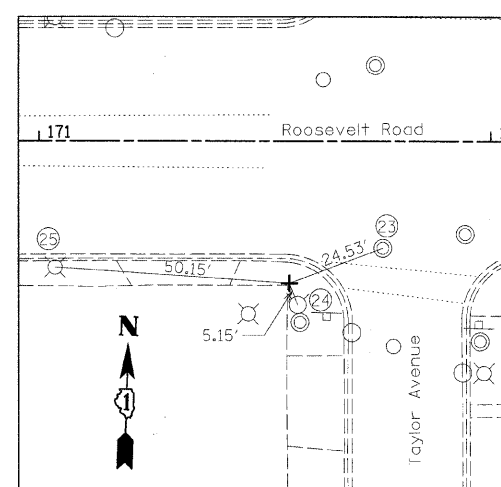


**CONTROL POINT #201**

STA 168+70.70, 33.47' LT

CONTROL POINT #201 IS A "X" CUT IN WALK ON S.E. CORNER OF ROOSEVELT RD. AND LOMBARD AVE.

20. BASE OF BUILDING AT CORNER
21. CENTER OF LIGHT POLE
22. CENTER OF TOP OF SPINDLE OF FIRE HYDRANT

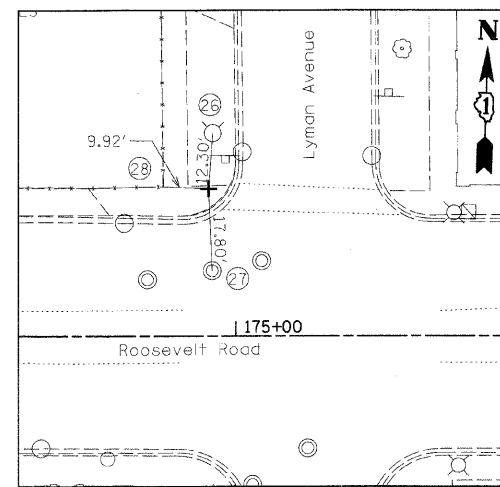


**CONTROL POINT #200**

STA 171+35.74, 31.40' RT

CONTROL POINT #200 IS A "X" CUT IN WALK ON S.W. CORNER OF ROOSEVELT RD. AND TAYLOR AVE.

23. CENTER OF CATCH BASIN
24. CENTER OF TOP OF SPINDLE OF FIRE HYDRANT
25. CENTER OF LIGHT POLE

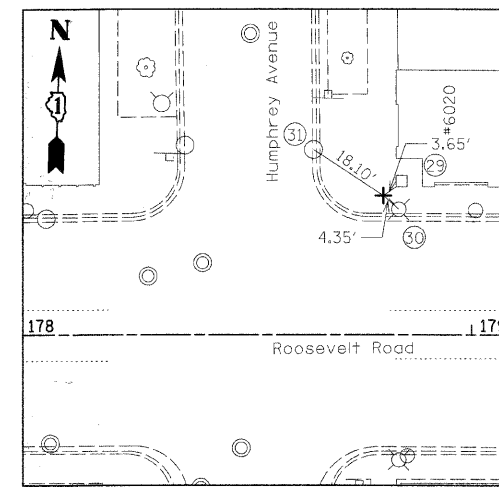


**CONTROL POINT #239**

STA 174+94.92, 32.43' LT

CONTROL POINT #239 IS A "X" CUT IN WALK ON N.W. CORNER OF ROOSEVELT RD. AND LYMAN AVE.

26. CENTER OF TOP OF SPINDLE OF FIRE HYDRANT
27. CENTER OF WATER VALVE VAULT
28. CORNER OF CONCRETE CURB AT FENCE

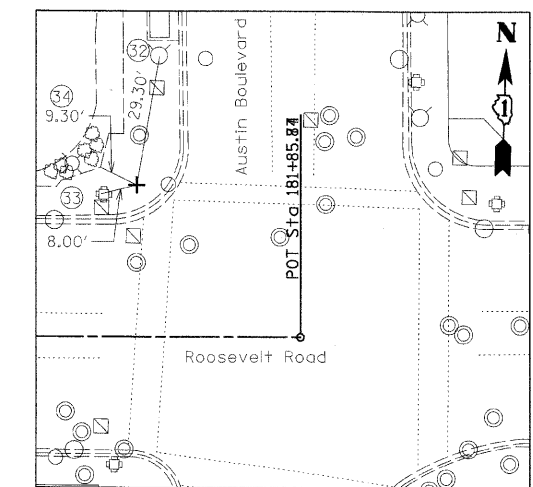


**CONTROL POINT #504**

STA 178+80.52, 31.61' LT

CONTROL POINT #504 IS A "X" CUT IN WALK ON N.E. CORNER OF ROOSEVELT RD. AND HUMPHREY AVE.

29. SOUTHWEST CORNER OF BRICK PILLAR NEXT TO BUILDING
30. FLOWLINE OF CATCH BASIN
31. CENTER OF LIGHT POLE



**CONTROL POINT #220**

STA 181+49.60, 33.42' LT

CONTROL POINT #220 IS A "X" CUT IN WALK ON N.W. CORNER OF ROOSEVELT RD. AND AUSTIN AVE.

32. CENTER OF TOP OF SPINDLE OF FIRE HYDRANT
33. CENTER OF TRAFFIC SIGNAL BASE
34. CORNER OF FENCE

FILE NAME = D:\RTE38-shc-ATB07.dgn

USER NAME = ID01

PLOT SCALE = 20.0000' / IN.  
PLOT DATE = 3/11/2010

DESIGNED - BL  
DRAWN - BM  
CHECKED - JB  
DATE -

REVISED -  
REVISED -  
REVISED -  
REVISED -

**STATE OF ILLINOIS  
DEPARTMENT OF TRANSPORTATION**

**ALIGNMENT, TIES, BENCHMARKS,  
AND CONTROL POINTS**

SCALE: 1" = 20' SHEET NO. OF SHEETS STA. TO STA.

F.A.P. RTE.	SECTION	COUNTY	TOTAL SHEETS	SHEET NO.
347	09-00248-00-RS	COOK	274	20
ILLINOIS FED. AID PROJECT			CONTRACT NO. 63432	