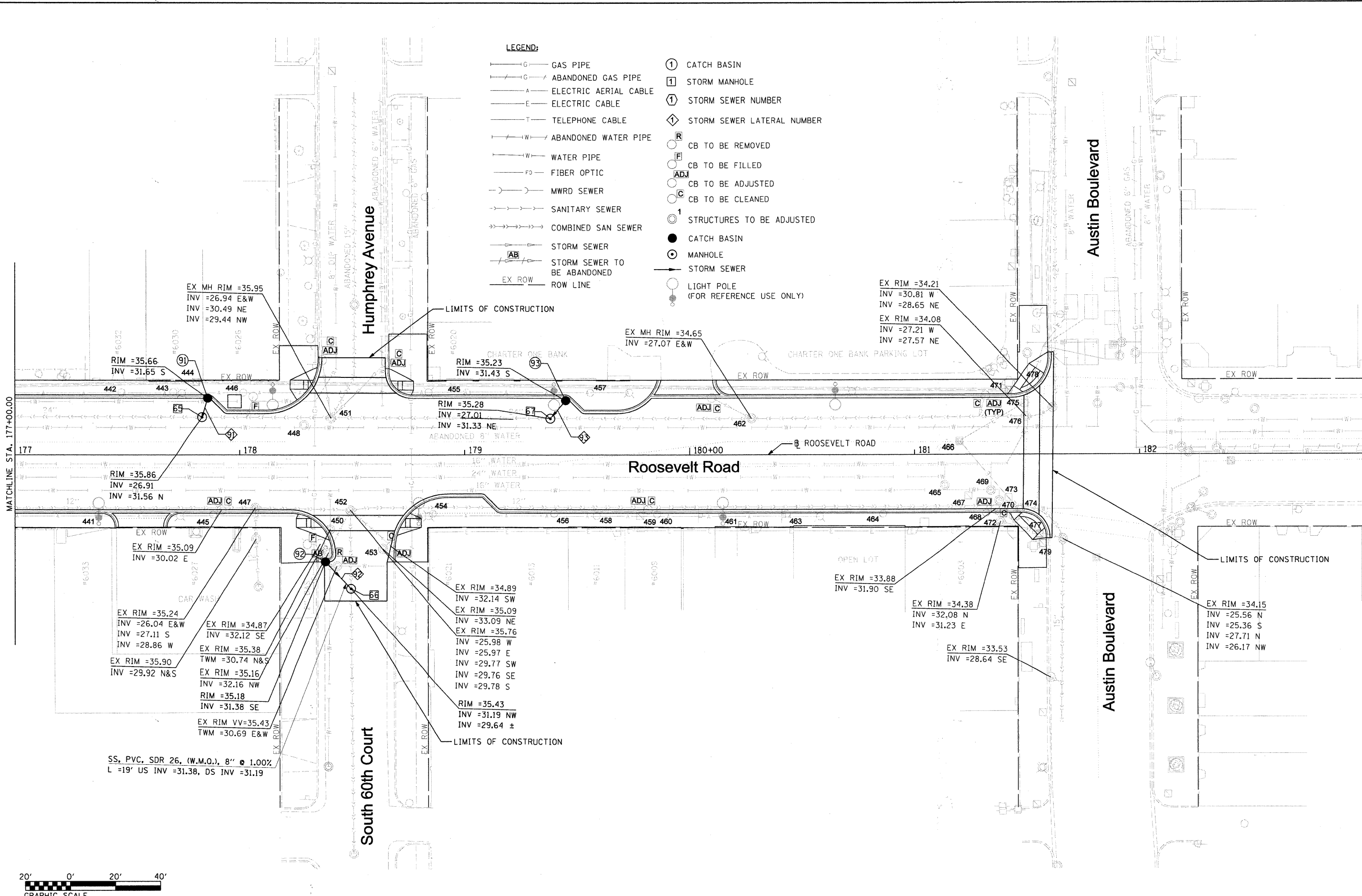




**LEGEND:**

- GAS PIPE
- ABANDONED GAS PIPE
- ELECTRIC AERIAL CABLE
- ELECTRIC CABLE
- TELEPHONE CABLE
- ABANDONED WATER PIPE
- WATER PIPE
- FIBER OPTIC
- MWRD SEWER
- SANITARY SEWER
- COMBINED SAN SEWER
- STORM SEWER
- STORM SEWER TO BE ABANDONED
- ROW LINE
- CATCH BASIN
- STORM MANHOLE
- STORM SEWER NUMBER
- STORM SEWER LATERAL NUMBER
- CB TO BE REMOVED
- CB TO BE FILLED
- CB TO BE ADJUSTED
- CB TO BE CLEANED
- STRUCTURES TO BE ADJUSTED
- CATCH BASIN
- MANHOLE
- STORM SEWER
- LIGHT POLE (FOR REFERENCE USE ONLY)



EX MH RIM =35.95  
INV =26.94 E&W  
INV =30.49 NE  
INV =29.44 NW

RIM =35.66  
INV =31.65 S

RIM =35.23  
INV =31.43 S

EX MH RIM =34.65  
INV =27.07 E&W

EX RIM =34.21  
INV =30.81 W  
INV =28.65 NE

EX RIM =34.08  
INV =27.21 W  
INV =27.57 NE

RIM =35.86  
INV =26.91  
INV =31.56 N

EX RIM =35.09  
INV =30.02 E

EX RIM =35.24  
INV =26.04 E&W  
INV =27.11 S  
INV =28.86 W

EX RIM =35.90  
INV =29.92 N&S

EX RIM =34.87  
INV =32.12 SE

EX RIM =35.38  
TWM =30.74 N&S

EX RIM =35.16  
INV =32.16 NW

RIM =35.18  
INV =31.38 SE

EX RIM VV=35.43  
TWM =30.69 E&W

EX RIM =34.89  
INV =32.14 SW

EX RIM =35.09  
INV =33.09 NE

EX RIM =35.76  
INV =25.98 W

INV =25.97 E

INV =29.77 SW

INV =29.76 SE

INV =29.78 S

RIM =35.43  
INV =31.19 NW

INV =29.64 ±

EX RIM =33.88  
INV =31.90 SE

EX RIM =34.38  
INV =32.08 N  
INV =31.23 E

EX RIM =33.53  
INV =28.64 SE

EX RIM =34.15  
INV =25.56 N  
INV =25.36 S

INV =27.71 N

INV =26.17 NW

SS, PVC, SDR 26, (W.M.O.), 8" @ 1.00%  
L =19' US INV =31.38, DS INV =31.19



FILE NAME = DIRTE38-shr-drain15.dgn	USER NAME = IDOT	DESIGNED - DA	REVISED -	<b>STATE OF ILLINOIS DEPARTMENT OF TRANSPORTATION</b>	<b>DRAINAGE AND UTILITIES PLAN</b>	F.A.P. RTE. 347	SECTION 09-00248-00-RS	COUNTY COOK	TOTAL SHEETS 274	SHEET NO. 108
PLOT SCALE = 20,0000' / IN.	DRAWN - CC	REVISED -	CONTRACT NO. 63432							
PLOT DATE = 3/23/2010	CHECKED - JB	REVISED -	ILLINOIS FED. AID PROJECT							
DATE -	REVISED -	SCALE: 1" = 20'	SHEET NO. OF SHEETS STA. 177+00.00 TO STA. 181+61.4							