

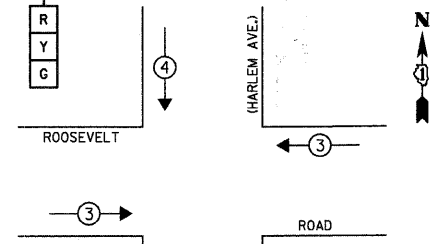
CONSTRUCTION NOTES:

- ① THE YELLOW AND GREEN ARROW SECTIONS OF THE SIGNAL HEAD SHALL BE BAGGED AND DISABLED DURING THE STAGE I AND STAGE III TEMPORARY CONTROLLER SEQUENCE PHASES.
- ② THE YELLOW AND GREEN ARROW SECTIONS OF THE SIGNAL HEAD SHALL BE BAGGED AND DISABLED DURING THE STAGE II AND STAGE III TEMPORARY CONTROLLER SEQUENCE PHASES.

RESTORATION OF WORK AREA. RESTORATION OF THE TRAFFIC SIGNAL WORK AREA SHALL BE INCIDENTAL TO THE RELATED PAY ITEM SUCH AS FOUNDATION, CONDUIT, HANDHOLE, TRENCH AND BACKFILL, ETC., AND NO EXTRA COMPENSATION SHALL BE ALLOWED. ALL ROADWAY SURFACES SUCH AS SHOULDERS, MEDIANS, SIDEWALKS, PAVEMENT, ETC. SHALL BE REPLACED IN KIND. ALL DAMAGE TO MOWED LAWNS SHALL BE REPLACED WITH AN APPROVED SOD, AND ALL DAMAGE TO UNMOWED FIELDS SHALL BE SEEDED IN ACCORDANCE WITH STANDARD SPECIFICATIONS 252 AND 250 RESPECTIVELY.

PUSHBUTTON "A" SHALL PLACE A CALL IN PHASES 2 AND 4.
 PUSHBUTTON "B" SHALL PLACE A CALL IN PHASES 4 AND 6.
 PUSHBUTTON "C" SHALL PLACE A CALL IN PHASES 6 AND 8.
 PUSHBUTTON "D" SHALL PLACE A CALL IN PHASES 2 AND 8.

TEMPORARY EMERGENCY VEHICLE PREEMPTION SEQUENCE



PROPOSED EMERGENCY VEHICLE PREEMPTOR			
EMERGENCY VEHICLE PREEMPTOR	3	4	
MOVEMENT	←	↓	↑

I.D.O.T. TRAFFIC SIGNAL INSTALLATION ELECTRICAL SERVICE REQUIREMENTS					TOTAL WATTAGE
TYPE	NO. OF LAMPS	WATTAGE X INCAND.	LED	% OPERATION	
SIGNAL (RED)	15	-	17	0.50	127.5
(YELLOW)	15	-	25	0.25	93.8
(GREEN)	15	-	15	0.25	56.3
ARROW	24	-	12	0.10	28.8
PED. SIGNAL	8	-	25	1.00	200.0
CONTROLLER	1	-	100	1.00	100.0
TOTAL =					606.3

ENERGY COSTS TO: TOTAL = 606.3
 ILLINOIS DEPARTMENT OF TRANSPORTATION
 DIVISION OF HIGHWAY/DISTRICT 1
 201 WEST CENTER COURT/SCHAUMBURG, ILLINOIS 60196-1096
 ENERGY SUPPLY: CONTACT: MIKE BELL
 PHONE: (708) 410-5314
 COMPANY: COMED

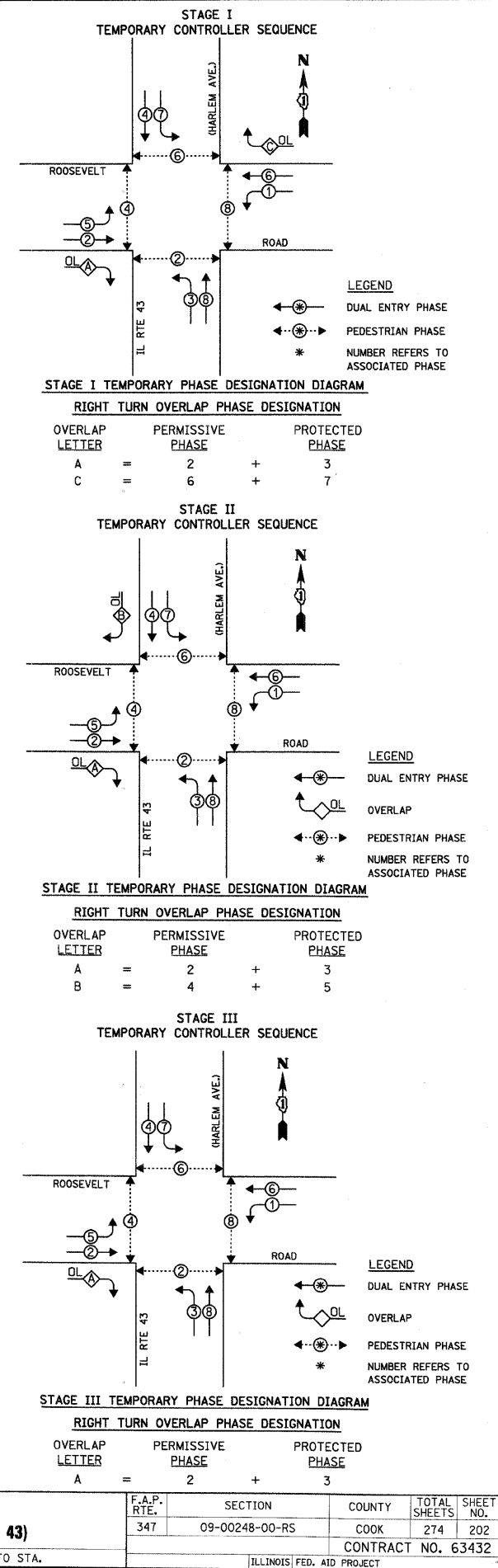
FOUNDATION (DEPTH)	FT. (m)	CABLE SLACK	FT. (m)	VERTICAL	FT. (m)
TYPE A - POST	4 (1.2)	HANDHOLE	6.5 (2.0)	ALL FOUNDATIONS	3.5 (1.0)
D - CONTROLLER	4 (1.2)	DOUBLE HANDHOLE	13 (4.0)	MAST ARM (L) POLE	20'+L-2=
C - M. ARM POLE		SIGNAL POST	2 (1.0)	(6m+L-0.6m)=	
24" (600mm)	10 (3.0)	CONTROLLER CAB.	1 (0.5)	BRACKET MOUNTED	13 (4.0)
30" (750mm)	15 (4.6)	FIBER OPTIC	13 (4.0)	PED. PUSHBUTTON	4 (1.2)
		ELECTRIC SERVICE	1 (0.5)	ELECTRIC SERVICE	13.5 (4.1)
		GROUND CABLE	1 (0.5)	SERVICE TO GROUND	13.5 (4.1)
				POST MOUNTED	6 (1.8)

FILE NAME = DIRTE38-sh-t-ba09.dgn	USER NAME = IDOT	DESIGNED -	REVISED -
PLOT SCALE = 20.0000' / IN.	CHECKED - JB	REVISIONS	
PLOT DATE = 3/11/2018	DATE -		

STATE OF ILLINOIS DEPARTMENT OF TRANSPORTATION

TEMPORARY CABLE PLAN
ROOSEVELT ROAD AT HARLEM AVE. (ILL RTE 43)

SCALE: N.T.S. SHEET NO. 9 OF 27 SHEETS STA. TO STA.



F.A.P. RTE. 347	SECTION 09-00248-00-RS	COUNTY COOK	TOTAL SHEETS 274	SHEET NO. 202
CONTRACT NO. 63432			ILLINOIS FED. AID PROJECT	