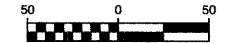


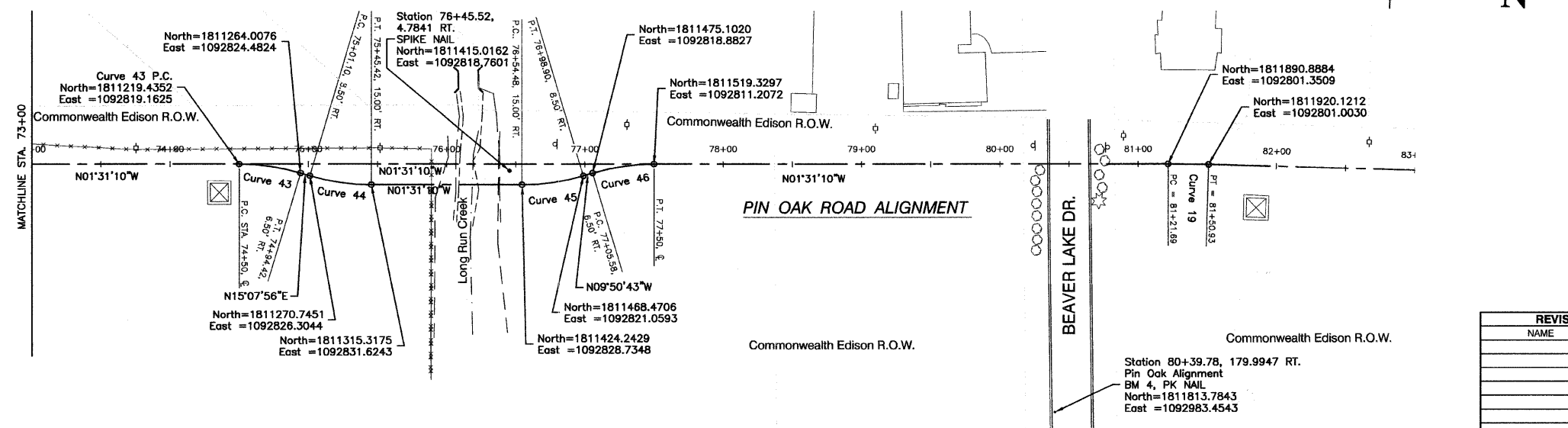
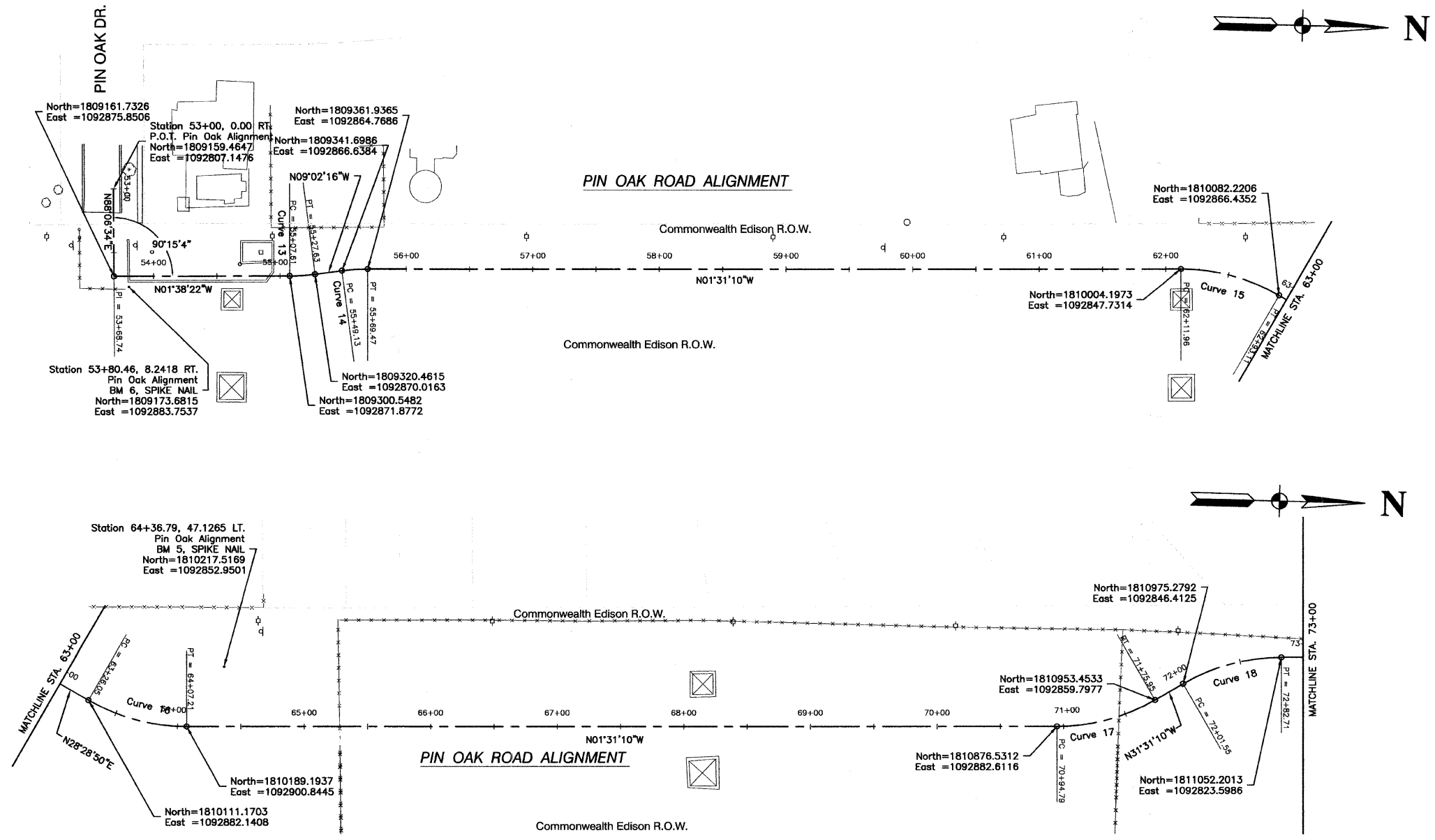
SECTION 1, TOWNSHIP 36, RANGE 11  
 SECTION 2, TOWNSHIP 36, RANGE 11  
 SECTION 11, TOWNSHIP 36, RANGE 11  
 SECTION 12, TOWNSHIP 36, RANGE 11

F. A. L. REC.	SECTION	COUNTY	TOTAL SHEETS	SHEET NO.
1600	06-00008-00-BT	WILL	73	8
STA.	TD STA.			
FED. ROAD DIST. NO. 1	ILLINOIS	FED. AID PROJECT	CMM-0001 (673)	

CONTRACT #63440



SCALE: 1"=50'



<b>CURVE 13</b> PI= STA. 55+17.63 Δ = 07°23'53" D = 36°57'54" R = 155.00' T = 10.02' L = 20.01' E = 0.32'	<b>CURVE 43</b> PI= STA. SEE PLAN Δ = 16°39'06" D = 36°57'54" R = 155.00' T = 22.68' L = 45.05' E = 1.65'
<b>CURVE 14</b> PI= STA. 55+59.31 Δ = 07°31'05" D = 36°57'54" R = 155.00' T = 10.18' L = 20.34' E = 0.33'	<b>CURVE 44</b> PI= STA. SEE PLANS Δ = 16°39'06" D = 36°57'54" R = 155.00' T = 22.68' L = 45.05' E = 1.65'
<b>CURVE 15</b> PI= STA. 62+53.49 Δ = 30°00'01" D = 36°57'55" R = 155.00' T = 41.53' L = 81.16' E = 5.47'	<b>CURVE 45</b> PI= STA. SEE PLANS Δ = 16°39'06" D = 36°57'54" R = 155.00' T = 22.68' L = 45.05' E = 1.65'
<b>CURVE 16</b> PI= STA. 63+67.58 Δ = 30°00'00" D = 36°57'54" R = 155.00' T = 41.53' L = 81.16' E = 5.47'	<b>CURVE 46</b> PI= STA. SEE PLANS Δ = 16°39'06" D = 36°57'54" R = 155.00' T = 22.68' L = 45.05' E = 1.65'
<b>CURVE 17</b> PI= STA. 71+36.32 Δ = 30°00'00" D = 36°57'54" R = 155.00' T = 41.53' L = 81.16' E = 5.47'	<b>CURVE 19</b> PI= STA. 81+36.31 Δ = 1°40'30" D = 05°43'46" R = 1000.00' T = 14.62' L = 29.24' E = 0.11'
<b>CURVE 18</b> PI= STA. 72+43.08 Δ = 30°00'00" D = 36°57'54" R = 155.00' T = 41.53' L = 81.16' E = 5.47'	

**ALIGNMENT DATUM:**  
 1. COORDINATES: ILLINOIS STATE PLANE EASTERN ZONE  
 2. ELEVATIONS: FEMA (NGVD '29)

REVISIONS	
NAME	DATE

ILLINOIS DEPARTMENT OF TRANSPORTATION  
**HOMER GLEN GMAQ COMMUNITY BIKE TRAIL AND EAST EXTENSION ALIGNMENT PLAN**  
 Pin Oak Drive to Beaver Lake Drive  
 SCALE: VERT. N/A  
 HORIZ. 1"=50'  
 DATE FEBRUARY 2, 2010  
 DRAWN BY JJB  
 CHECKED BY BDB